


|             |          |             |
|-------------|----------|-------------|
| APP CRS     | Rwy Idg  | <b>7702</b> |
| <b>021°</b> | TDZE     | <b>599</b>  |
|             | Apt Elev | <b>599</b>  |

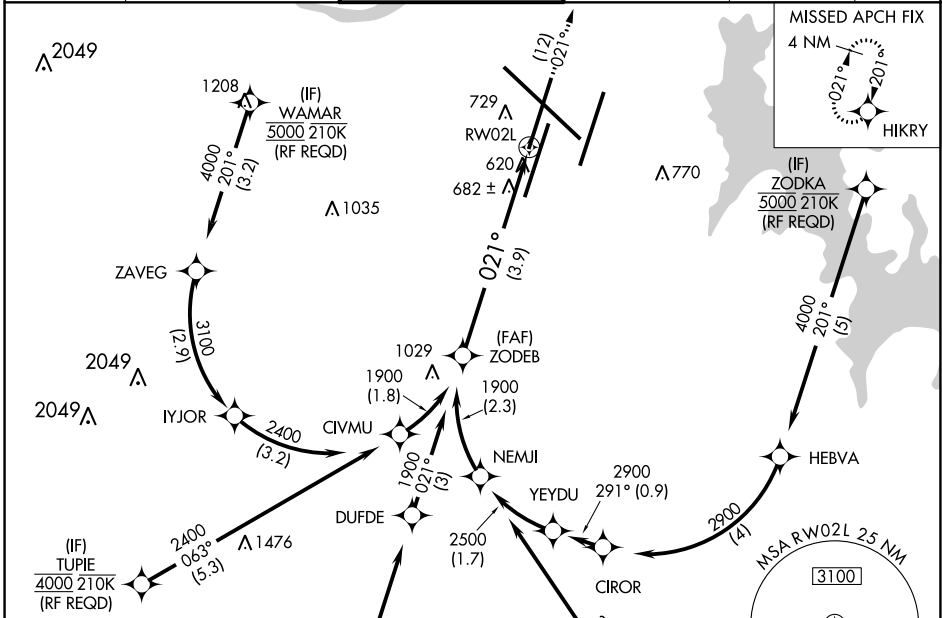
# RNAV (RNP) Z RWY 2L

NASHVILLE INTL (BNA)

▼ For uncompensated Baro-VNAV systems, procedure NA below -11°C (13°F) or above 54°C (130°F). GPS required. Simultaneous approach authorized with Rwy 2R. For inop ALSF-2, increase RNP 0.15 all Cats visibility to RVR 4700, increase RNP 0.30 all Cats visibility to 1 ¼ mile. Use of FD or AP providing RNAV track guidance required during simultaneous operations.

ALSF-2  MISSED APPROACH: Climb to 4000 on track 021° to HIKRY and hold, continue climb-in-hold to 4000.

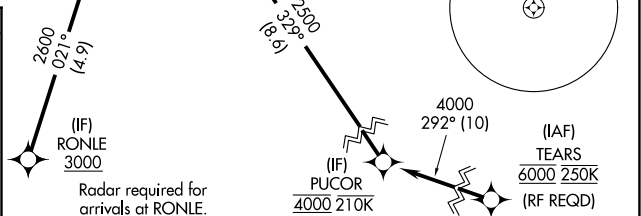
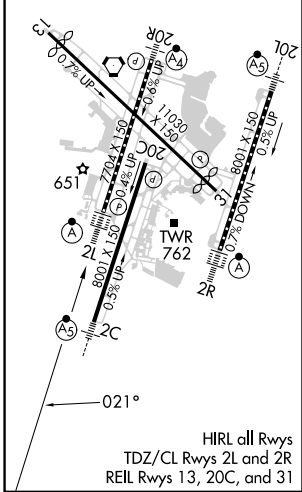
|              |                    |                    |                    |               |       |
|--------------|--------------------|--------------------|--------------------|---------------|-------|
| D-ATIS       | NASHVILLE APP CON  | NASHVILLE TOWER    | GND CON            | CLNC DEL      | CPDLC |
| <b>135.1</b> | <b>118.4 360.7</b> | <b>118.6 257.8</b> | <b>121.9 348.6</b> | <b>126.05</b> |       |



SE-1, 08 AUG 2024 to 05 SEP 2024

SE-1, 08 AUG 2024 to 05 SEP 2024

|          |          |          |
|----------|----------|----------|
| ELEV 599 | <b>D</b> | TDZE 599 |
|----------|----------|----------|



|             |        |        |             |   |
|-------------|--------|--------|-------------|---|
| GP 3.00°    | TCH 55 | 3.9 NM |             |   |
| CATEGORY    | A      | B      | C           | D |
| RNP 0.15 DA |        | 898/24 | 299 (300-½) |   |
| RNP 0.30 DA |        | 991/41 | 392 (400-¾) |   |

## AUTHORIZATION REQUIRED