

APP CRS	Rwy Idg	8000
201°	TDZE	551
	Apt Elev	599

RNAV (RNP) Z RWY 20L

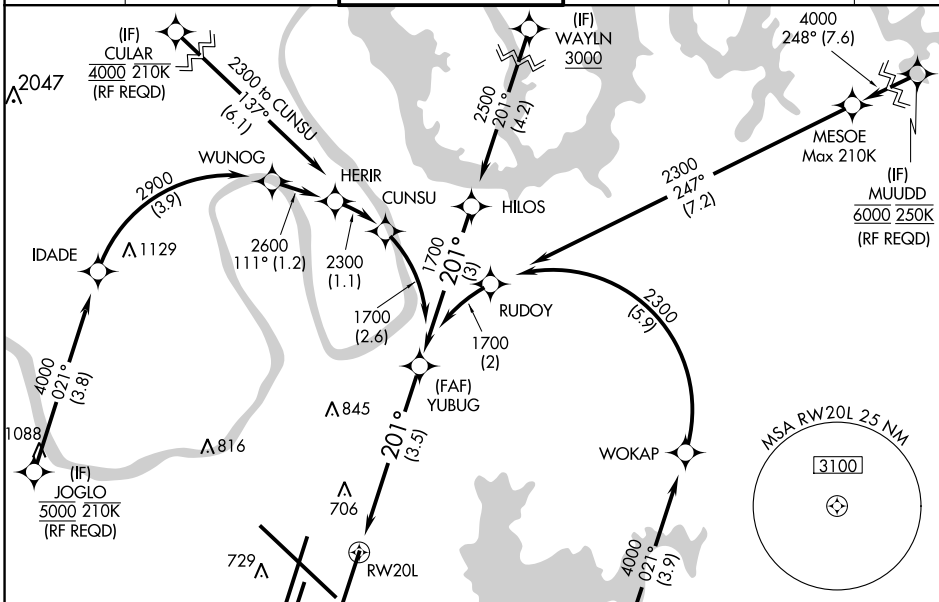
NASHVILLE INTL (BNA)

GPS required. Simultaneous approach authorized with Rwy 20R. Use of FD or AP providing RNAV track guidance required during simultaneous operations. For uncompensated Baro-VNAV systems, procedure NA below -11°C (13°F) or above 54°C (130°F). Inop table does not apply to RNP 0.20. For inop MALSRL, increase RNP 0.30 all Cats visibility to 1½.

MALSRL

MISSED APPROACH: Climb to 1300 then climbing left turn to 4000 direct CENOP and hold.

D-ATIS	NASHVILLE APP CON	NASHVILLE TOWER	GND CON	CLNC DEL	CPDLC
135.1	118.4 360.7	118.6 257.8	121.9 348.6	126.05	



SE-1, 03 OCT 2024 to 31 OCT 2024

SE-1, 03 OCT 2024 to 31 OCT 2024

ELEV 599	TDZE 551
----------	----------

RADAR REQUIRED

MISSED APCH FIX

CENOP

1300 4000 CENOP

See planview for multiple IF locations.

RWY 20L

YUBUG 1700

GP 3.00° TCH 47

3.5 NM

CATEGORY	A	B	C	D
RNP 0.20 DA		810/40	259 (200-¾)	
RNP 0.30 DA		1008/55	457 (400-1)	

AUTHORIZATION REQUIRED

MSA RW20L 25 NM

3100

ELEV 599

TDZE 551

HIRL all Rwys TDZ/CL Rwys 2L and 2R REIL Rwys 13, 20C, and 31