

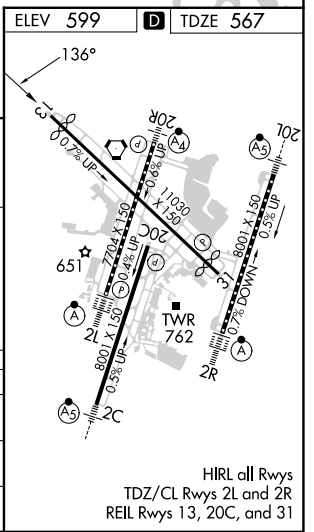
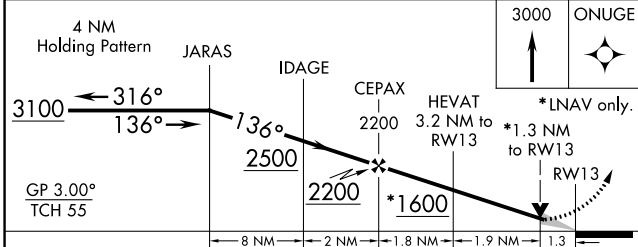
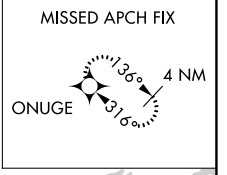
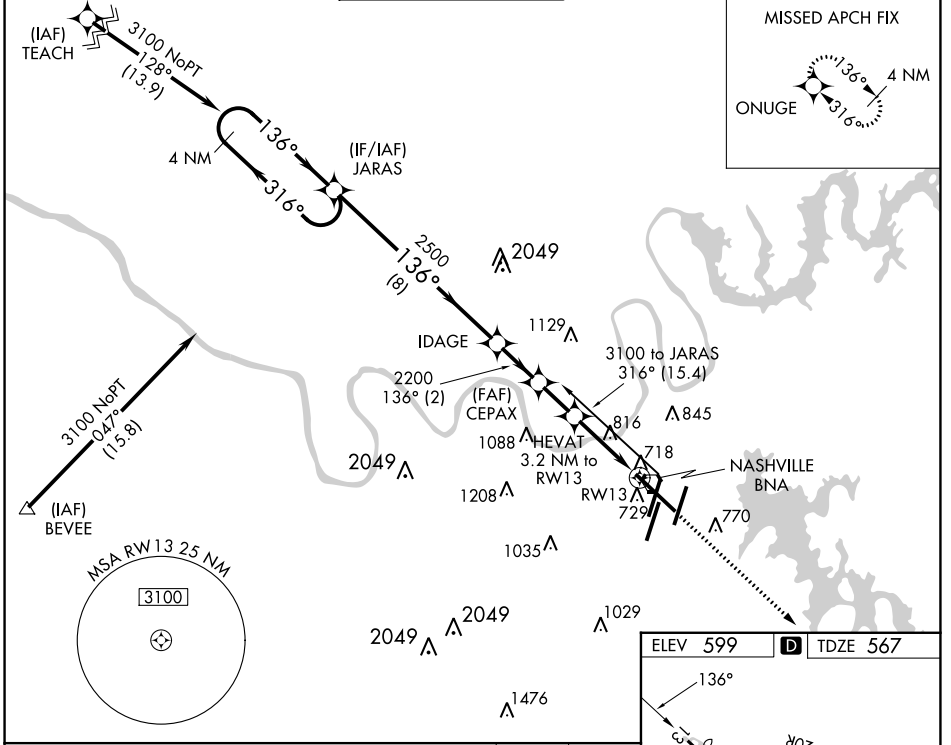
APP CRS	Rwy Idg	<b>9487</b>
<b>136°</b>	TDZE	<b>567</b>
	Apt Elev	<b>599</b>

# RNAV (GPS) RWY 13

NASHVILLE INTL (BNA)

RNP APCH.		MISSED APPROACH: Climb to 3000 direct ONUGE and hold.	
<p>▼ For uncompensated Baro-VNAV systems, LNAV/VNAV NA below -16°C or above 47°C.</p>			

D-ATIS	NASHVILLE APP CON	NASHVILLE TOWER	GND CON	CLNC DEL	CPDLC
<b>135.1</b>	<b>118.4 360.7</b>	<b>118.6 257.8</b>	<b>121.9 348.6</b>	<b>126.05</b>	



CATEGORY	A	B	C	D
LNAV/ VNAV	968-1½ 401 (400-1½)			
LNAV MDA	1080-1	513 (500-1)	1080-1½	1080-1¾
			513 (500-1½)	513 (500-1¾)
Ⓢ CIRCLING	1100-1	1120-1	1200-1¾	1380-2½
	501 (600-1)	521 (600-1)	601 (700-1¾)	781 (800-2½)

HIRL all Rwys  
TDZ/CL Rwys 2L and 2R  
REIL Rwys 13, 20C, and 31

SE-1, 03 OCT 2024 to 31 OCT 2024

SE-1, 03 OCT 2024 to 31 OCT 2024