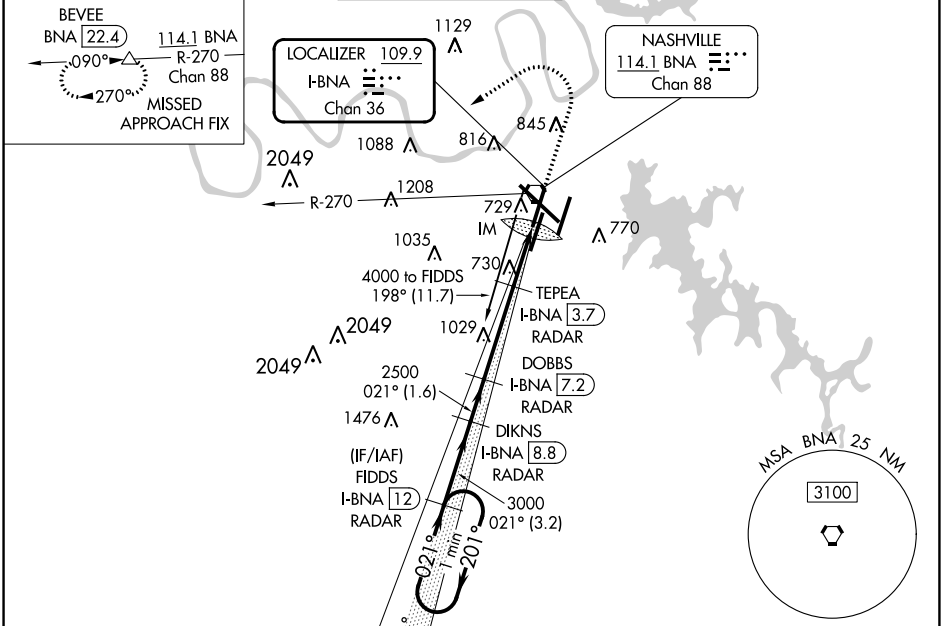


LOC/DME I-BNA <b>109.9</b> Chan 36	APP CRS <b>021°</b>	Rwy ldg TDZE Apt Elev <b>7702</b> <b>599</b> <b>599</b>
--	------------------------	--

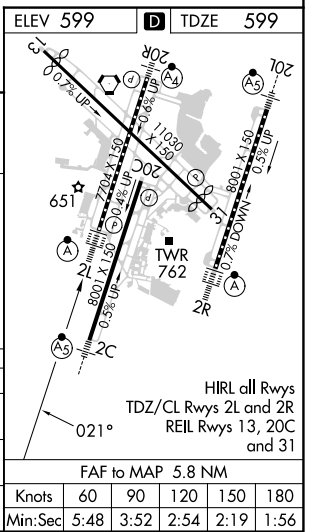
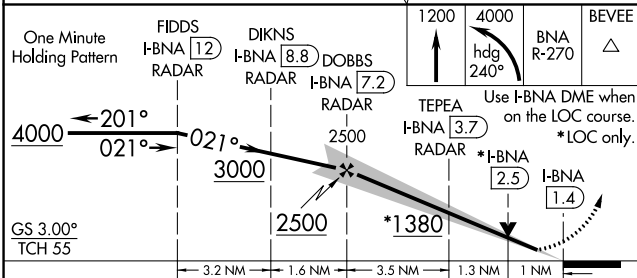
# ILS or LOC RWY 2L

NASHVILLE INTL (BNA)

<p>Simultaneous approach authorized with Rwy 2R. DME or radar required.</p>	<p>MISSED APPROACH: Climb to 1200 then climbing left turn to 4000 on heading 240° and on BNA VORTAC R-270 to BEVEE/BNA VORTAC 22.4 DME and hold.</p>				
	D-ATIS <b>135.1</b>	NASHVILLE APP CON <b>118.4 360.7</b>	NASHVILLE TOWER <b>118.6 257.8</b>	GND CON <b>121.9 348.6</b>	CLNC DEL <b>126.05</b>



**DME or RADAR REQUIRED**



CATEGORY	A	B	C	D
S-ILS 2L	799/18 200 (200-½)			
S-LOC 2L	980/24	381 (400-½)	980/35	381 (400-¾)
<b>C</b> CIRCLING	1100-1 501 (600-1)	1120-1 521 (600-1)	1200-1¼ 601 (700-1¼)	1380-2½ 781 (800-2½)

SE-1, 03 OCT 2024 to 31 OCT 2024

SE-1, 03 OCT 2024 to 31 OCT 2024