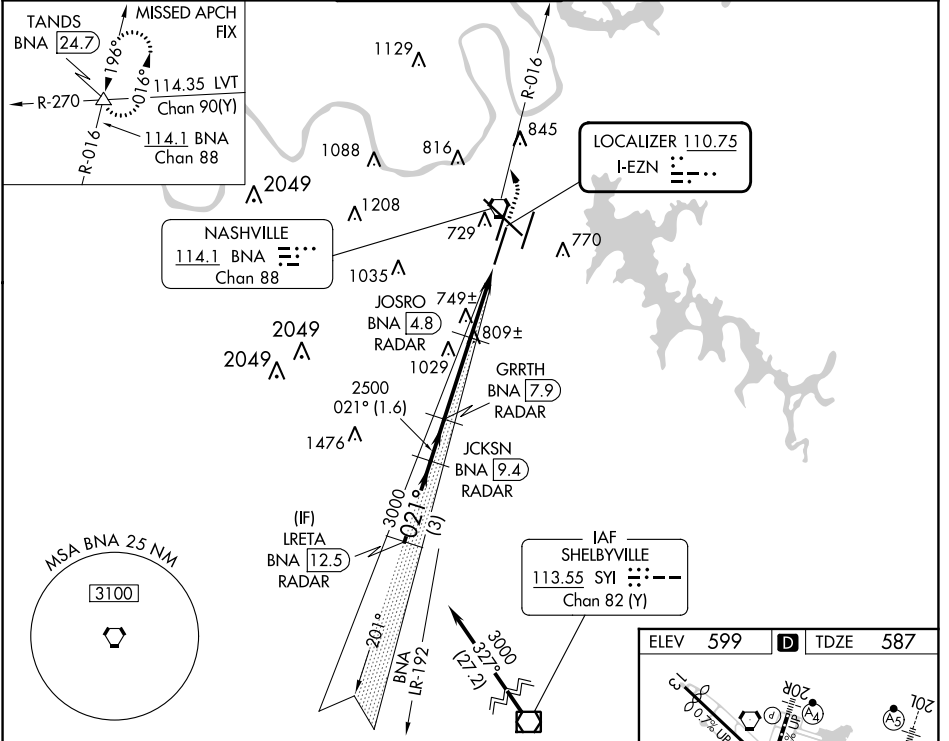


LOC I-EZN 110.75	APP CRS 021°	Rwy Idg TDZE Apt Elev 7601 587 599
----------------------------	------------------------	--

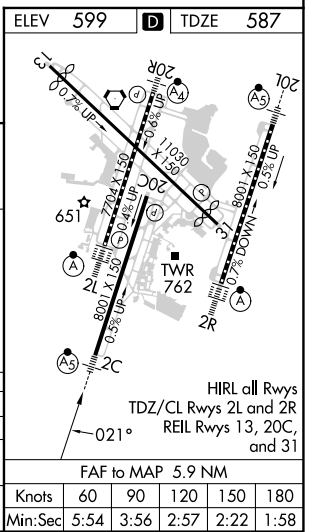
ILS or LOC RWY 2C

NASHVILLE INTL (BNA)

DME or RADAR required.		MALSR 		MISSED APPROACH: Climb to 1300 then climbing left turn to 4000 on BNA VORTAC R-016 to TANDS INT/BNA 24.7 and hold.			
<p>▼ Simultaneous approach authorized. For inop ALS, increase S-LOC 2C Cats C and D visibility to RVR 6000. DME from BNA VORTAC.</p> <p>▲ Simultaneous reception of I-EZN and BNA DME required. #RVR 1800 authorized with the use of FD or AP or HUD to DA.</p>		D-ATIS 135.1	NASHVILLE APP CON 118.4 360.7	NASHVILLE TOWER 118.6 257.8	GND CON 121.9 348.6	CLNC DEL 126.05	CPDLC



VGSI and ILS glidepath not coincident.				1300	4000	BNA R-016	TANDS Δ
LRETA BNA [12.5] RADAR	JCKSN BNA [9.4] RADAR	GRRTH BNA [7.9] RADAR	JOSRO BNA [4.8] *BNA [3.2] RADAR	*LOC only.			
3000 - 021°		2500		*1520			
GS 3.00° TCH 60		3000		BNA [2]			
3 NM		1.6 NM		3.1 NM		1.6 NM	
1.2 NM							
CATEGORY	A	B	C	D			
S-ILS 2C #	787/24			200 (200-1/2)			
S-LOC 2C	1000/24	413 (500-1/2)	1000/40	413 (500-3/4)			
CIRCLING	1100-1 501 (600-1)	1120-1 521 (600-1)	1200-1 3/4 601 (700-1 3/4)	1380-2 1/2 781 (800-2 1/2)			



SE-1, 03 OCT 2024 to 31 OCT 2024

SE-1, 03 OCT 2024 to 31 OCT 2024

FAF to MAP 5.9 NM					
Knots	60	90	120	150	180
Min:Sec	5:54	3:56	2:57	2:22	1:58