

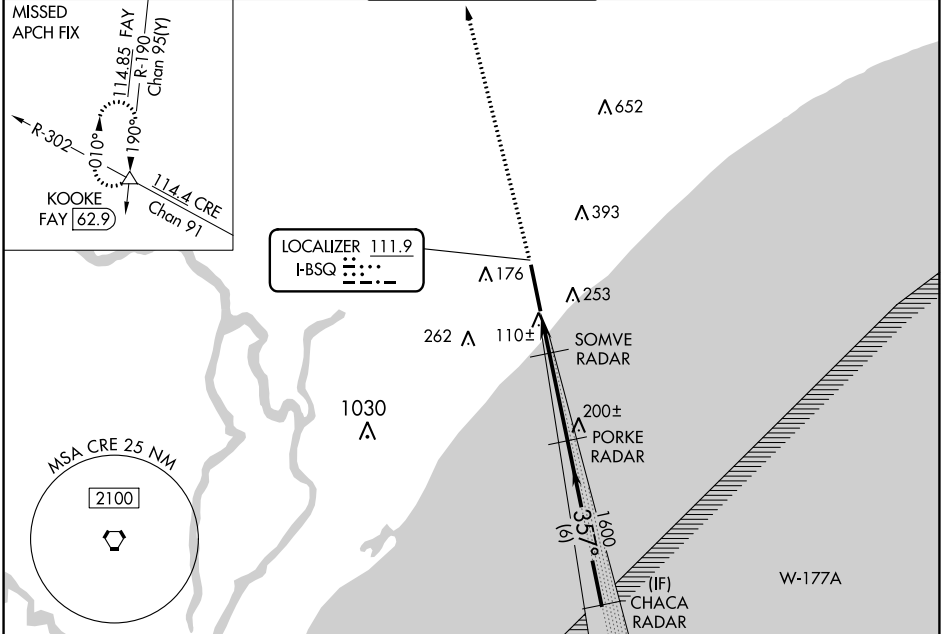
LOC I-BSQ	APP CRS	Rwy Idg	9503
111.9	357°	TDZE	25
		Apt Elev	25

ILS or LOC RWY 36

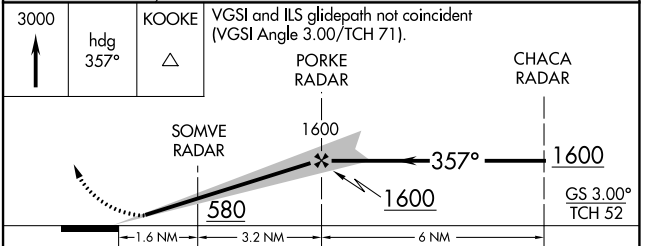
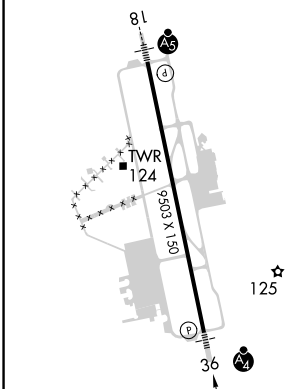
MYRTLE BEACH INTL (MYR)

RADAR required.		MALSF	MISSED APPROACH: Climb to 3000 on heading 357° expect RADAR vectors to KOOKE INT/FAY 62.9 DME and hold.		
For inop ALS increase S-LOC 36 Cats D/E visibility to RVR 5000.					

ATIS	MYRTLE BEACH APP CON ★ (171° - 321°) 127.4 257.95 (322° - 170°) 119.2 350.3	MYRTLE BEACH TOWER ★ 128.45 (CTAF) 259.3	GND CON	CLNC DEL	UNICOM
123.925			120.3 275.8	120.3	122.95



ELEV 25	TDZE 25
---------	---------



CATEGORY	A	B	C	D	E
S-ILS 36		225/40	200 (200-¾)		
S-LOC 36		360/40	335 (400-¾)		
CIRCLING	560-1	535 (600-1)	700-2 675 (700-2)	700-2¼ 675 (700-2¼)	700-2½ 675 (700-2½)

MYRTLE BEACH, SOUTH CAROLINA
Amdt 5 03NOV22

33°41'N-78°56'W

ILS or LOC RWY 36

SE-2, 03 OCT 2024 to 31 OCT 2024

SE-2, 03 OCT 2024 to 31 OCT 2024