

MT. CLEMENS, MICHIGAN

TACAN Z RWY 19

TACAN MTC Chan 64	APCH CRS 177°	Rwy ldg TDZE Arprt Elev 9000 579 580
-----------------------------	-------------------------	--

[USAF]

SELFRIDGE ANGB (KMTC)

▼ * When ALS inop, increase CAT AB RVR to 55, vis to 1 mile, CAT CDE vis to 1½ miles.
** Circling not authorized W of Rwy 01-19.

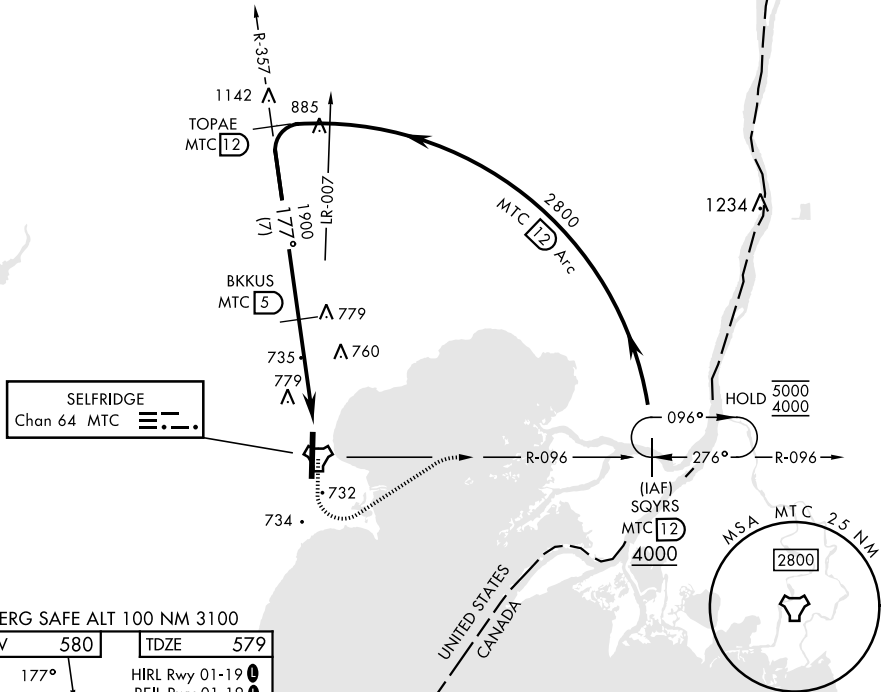
ALSF-1



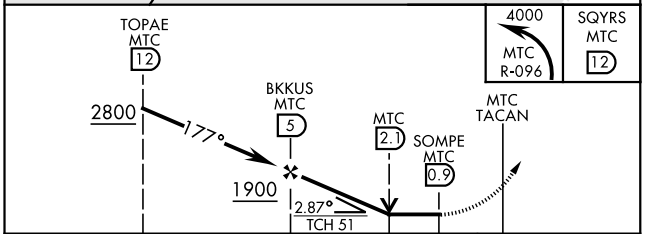
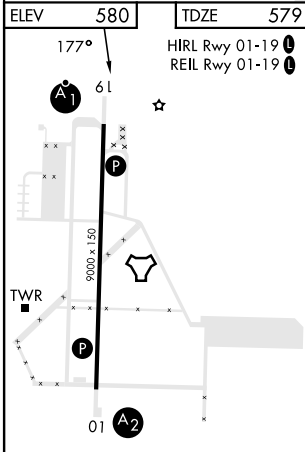
MISSED APPROACH: Climbing left turn to 4000, intercept MTC R-096 to SQYRS and hold, continue climb-in-hold to 4000.

ATIS 125.325 270.1	SELFRIDGE APP CON 119.6 318.2	SELFRIDGE TOWER ★ 120.15 (CTAF) 225.4	GND CON 128.3 275.8	CLNC DEL 128.3 275.8
------------------------------	---	---	-------------------------------	--------------------------------

1138 Visibility reductions by helicopters not authorized.



EMERG SAFE ALT 100 NM 3100



CATEGORY	A	B	C	D	E
S-19 *	1040/40	461 (500-¾)	1040/50	461 (500-1)	
CIRCLING **	1040-1	460 (500-1)	1040-1½ 460 (500-1½)	1140-2	560 (600-2)

MT. CLEMENS, MICHIGAN
Amdt 4 26DEC24

42° 37' N-82° 50' W

SELFRIDGE ANGB (KMTC)

TACAN Z RWY 19

EC-1, 26 DEC 2024 to 23 JAN 2025

EC-1, 26 DEC 2024 to 23 JAN 2025