

MT. CLEMENS, MICHIGAN

TACAN Z RWY 1

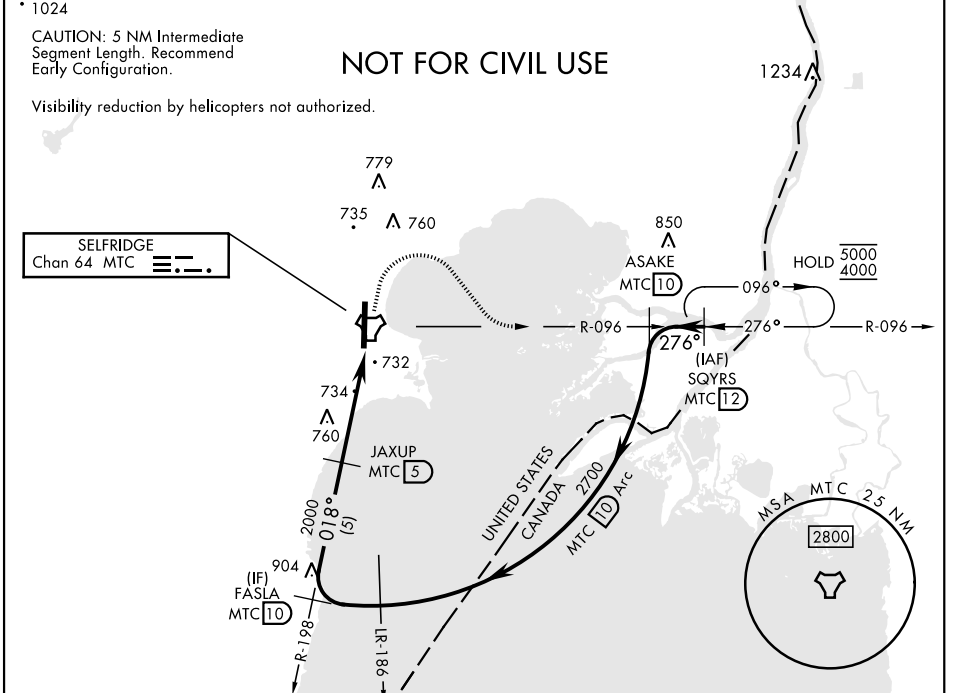
TACAN MTC Chan 64	APCH CRS 018°	Rwy Idg TDZE Arprt Elev 9000 580 580
-----------------------------	-------------------------	--

[USAF]

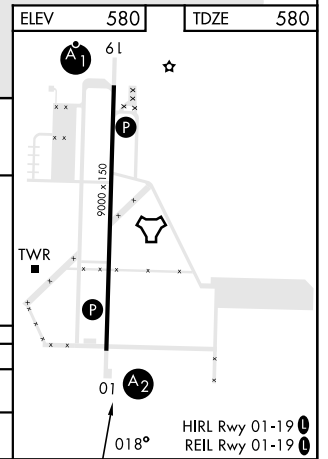
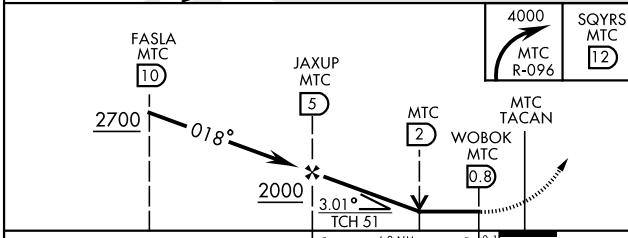
SELFRIDGE ANGB (KMTC)

<p>▼ * When ALS inop, increase CAT AB RVR to 55, vis to 1 mile, CAT CDE vis to 1 3/8 miles.</p> <p>** Circling not authorized W of Rwy 01-19.</p>	<p>SALS</p>	<p>MISSED APPROACH: Climbing right turn to 4000, intercept MTC R-096 to SQYRS and hold, continue to climb-in-hold to 4000.</p>
---	-------------	--

<p>ATIS 125.325 270.1</p>	<p>SELFRIDGE APP CON 119.6 318.2</p>	<p>SELFRIDGE TOWER ★ 120.15(CTAF) 225.4</p>	<p>GND CON 128.3 275.8</p>	<p>CLNC DEL 128.3 275.8</p>
--------------------------------------	---	--	---------------------------------------	--



ELEV	580	TDZE	580
------	-----	------	-----



CATEGORY	A	B	C	D	E
S-01*	1040/40	460 (500-3/4)	1040/55	460	(500-1)
CIRCLING**	1040-1	460 (500-1)	1040-1 1/2 460 (500-1 1/2)	1140-2	560 (600-2)

MT. CLEMENS, MICHIGAN
Amdt 4 26DEC24

42°37'N-82°50'W

SELFRIDGE ANGB (KMTC)

TACAN Z RWY 1

EC-1, 26 DEC 2024 to 23 JAN 2025

EC-1, 26 DEC 2024 to 23 JAN 2025