

MT. CLEMENS, MICHIGAN

ILS or LOC Z RWY 1

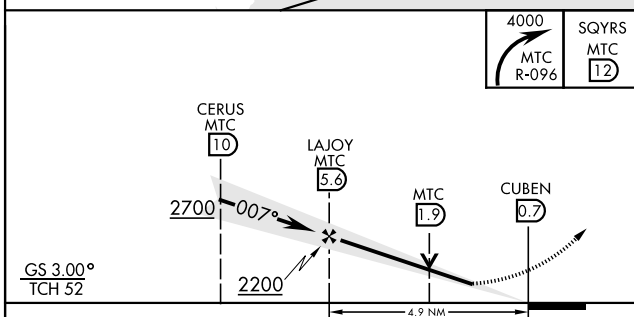
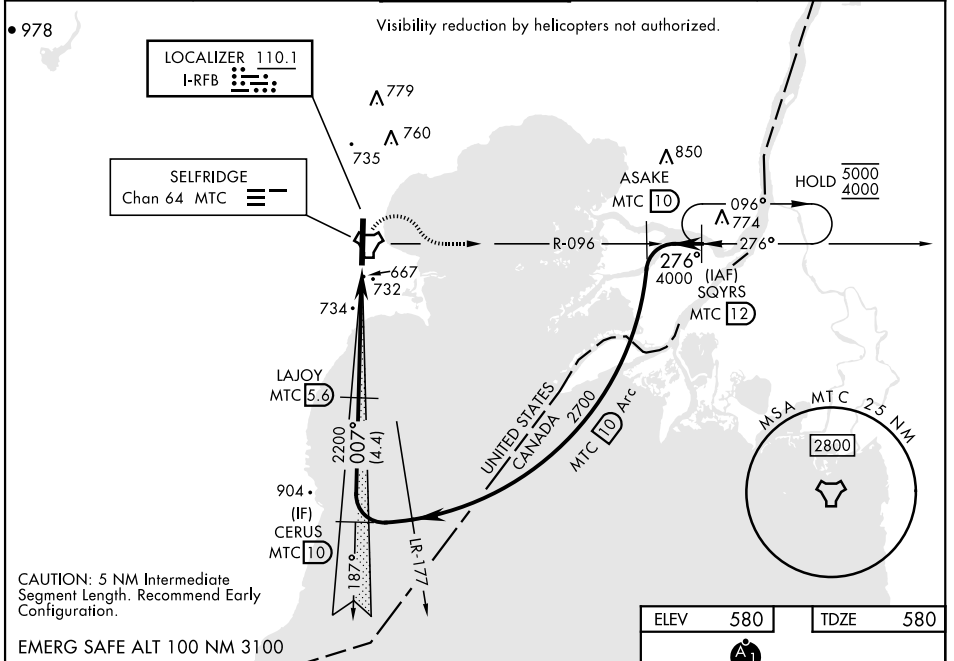
LOC I-RFB 110.1	APCH CRS 007°	Rwy Idg TDZE Arpt Elev 9000 580 580	[USAF]	SELFRIDGE ANGB (KMTC)
---------------------------	-------------------------	---	--------	-----------------------

▽ * When ALS inop, increase RVR to 45, vis to 7/8 mile.
 ** When ALS inop, increase CAT AB RVR to 55 and vis to 1 mile; CAT CDE RVR to 60, vis to 1 1/8 miles.
 *** Circling not authorized W of Rwy 01-19.

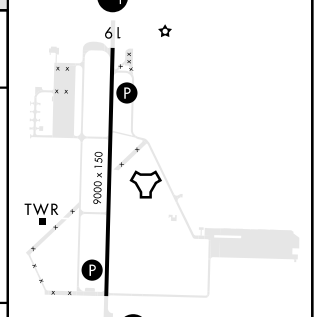
SALS A2

MISSED APPROACH: Climbing right turn to 4000, intercept MTC R-096 to SQYRS and hold, continue climb-in-hold to 4000.

ATIS 125.325 270.1	SELFRIDGE APP CON 119.6 318.2	SELFRIDGE TOWER ★ 120.15 (CTAF) 0 225.4	GND CON 128.3 275.8	CLNC DEL 128.3 275.8
------------------------------	---	---	-------------------------------	--------------------------------



ELEV 580	TDZE 580
----------	----------



CATEGORY	A	B	C	D	E
S-ILS 01*	873/40		293	(300-3/4)	
S-LOC 01**	1000/40	420 (500-3/4)	1000/50	420	(500-1)
CIRCLING ***	1040-1	460 (500-1)	1040-1 1/2 460 (500-1 1/2)	1140-2	560 (600-2)

FAF to MAP 4.9 NM					
Knots	60	90	120	150	180
Min:Sec	4:54	3:16	2:27	1:58	1:38

MT. CLEMENS, MICHIGAN 42° 37' N-82° 50' W SELFRIDGE ANGB (KMTC)

Amdt 4 26DEC24

ILS or LOC Z RWY 1

EC-1, 26 DEC 2024 to 23 JAN 2025

EC-1, 26 DEC 2024 to 23 JAN 2025