

TACAN RWY 33

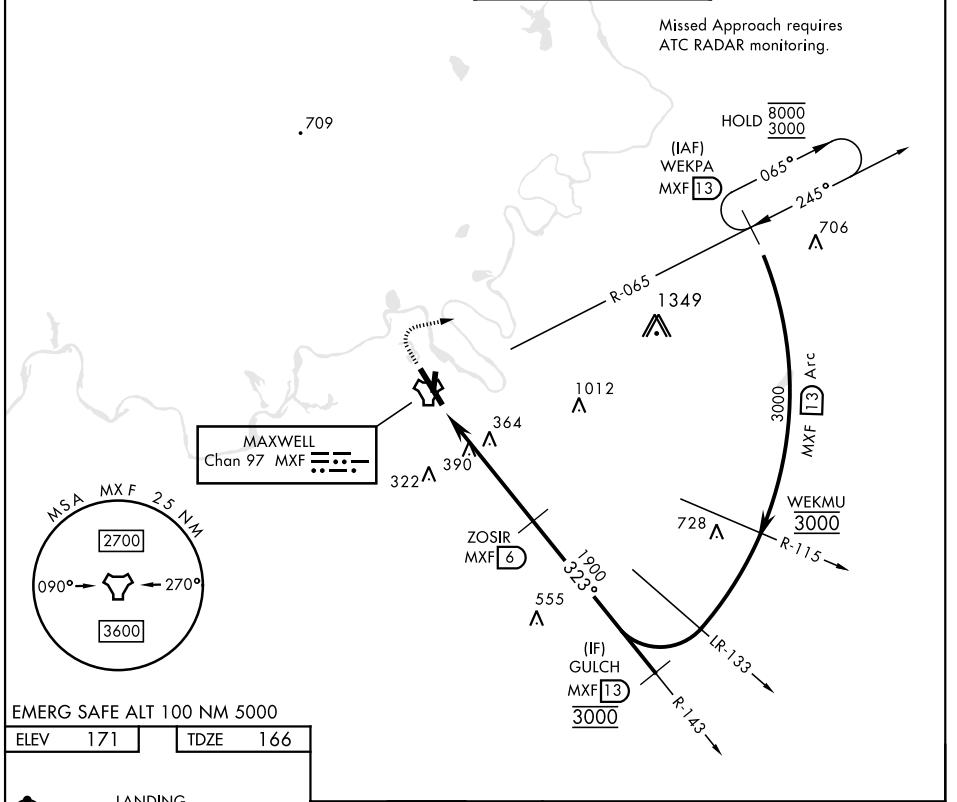
TACAN MXF Chan 97	APCH CRS 323°	Rwy ldg TDZE 166 Arprt Elev 171
-----------------------------	-------------------------	---

AL-274 [USAF]

MAXWELL AFB (KMXF)

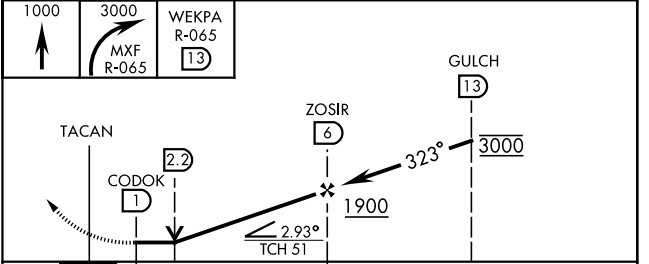
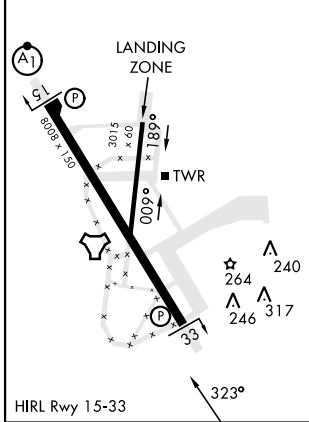
<p>▼ * Circling not authorized E of Rwy 15-33.</p>		<p>MISSED APPROACH: Climb to 1000, then climbing right turn to 3000 to intercept MXF TACAN R-065 outbound to 13 DME (WEKPA) and hold.</p>	
<p>ATIS ★ 134.7 269.9</p>	<p>MONTGOMERY APP CON 121.2 269.05 (N) 124.0 363.025 (S)</p>	<p>TOWER ★ 118.15 253.5</p>	<p>GND CON 127.15 289.4</p>

Missed Approach requires
ATC RADAR monitoring.



EMERG SAFE ALT 100 NM 5000

ELEV 171	TDZE 166
----------	----------



CATEGORY	A	B	C	D	E
S-33	740-1	574 (600-1)	740-1 5/8	574 (600-1 5/8)	
C CIRCLING *	740-1	569 (600-1)	740-1 5/8 569 (600-1 5/8)	920-2 1/2 749 (800-2 1/2)	NA

TACAN RWY 33

SE-4, 03 OCT 2024 to 31 OCT 2024

SE-4, 03 OCT 2024 to 31 OCT 2024