

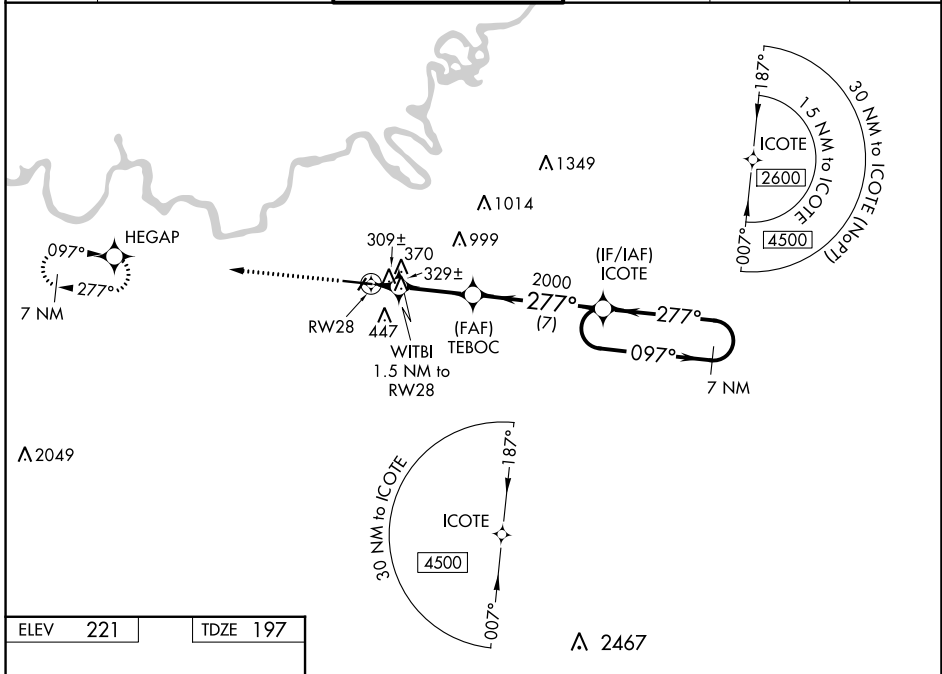
WAAS CH 56200 W28A	APP CRS 277°	Rwy Idg TDZE Apt Elev	9020 197 221
----------------------------------------	------------------------	-----------------------------	-----------------------------------------

RNAV (GPS) RWY 28
MONTGOMERY RGNL (DANNELLY FLD) (MGM)

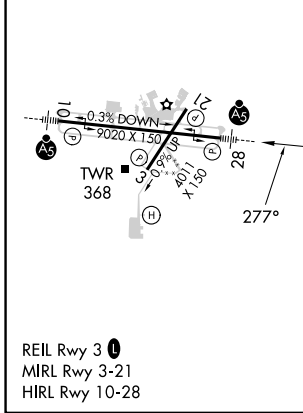
⚠ For uncompensated Baro-VNAV systems, LNAV/VNAV NA below -8°C (18°F) or above 54°C (130°F). DME/DME RNP-0.3 NA. For inop MALSR, increase LPV Cat E visibility to ¾ mile; increase LNAV/VNAV Cat E visibility to 1⅓ mile; increase LNAV Cat E visibility to 1⅓ mile. Circling for Cat E NA north of Rwy 10-28.

MALSR
MISSED APPROACH: Climb to 3100 direct HEGAP and hold.

ATIS 120.675	MONTGOMERY APP CON * 124.0 363.025	DANNELLY TOWER * 119.7 (CTAF) 0 360.85	GND CON 121.7 348.6	CLNC DEL 118.3 270.3	UNICOM 122.95
------------------------	----------------------------------------------	--------------------------------------------------	-------------------------------	--------------------------------	-------------------------



ELEV 221	TDZE 197
----------	----------



3100	HEGAP	VGSI and RNAV glidepath not coincident (VGSI Angle 3.00/TCH 75).	7 NM Holding Pattern
* LNAV only	WITBI	TEBOC	ICOTE
	1.5 NM to RW28	2000	097° → 2600
	* 1 NM to RW28	720*	← 277°
	1 NM	0.5	4 NM
			7 NM
			GP 3.00° TCH 56

CATEGORY	A	B	C	D	E
LPV DA	397-½		200 (200-½)		
LNAV/VNAV DA	606-⅞		409 (400-⅞)		
LNAV MDA	580-½ 383 (400-½)		580-⅝ 383 (400-⅝)		
C CIRCLING	700-1 479 (500-1)		800-1½ 639 (700-2)		860-2¼ 639 (700-2¼)

SE-4, 08 AUG 2024 to 05 SEP 2024

SE-4, 08 AUG 2024 to 05 SEP 2024