

# HI-ILS Y or LOC Y RWY 10

LOC I-MGM <b>109.9</b>	APCH CRS <b>097°</b>	Rwy ldg 9020 TDZE 219 Arpt Elev 221
DME required. ADF and DME required for LOC only.		
* When ALS inop, increase RVR to 40. ** When ALS inop, increase vis to 1 1/2 miles. *** Circling not authorized for CAT E, N of Rwy 10-28.		

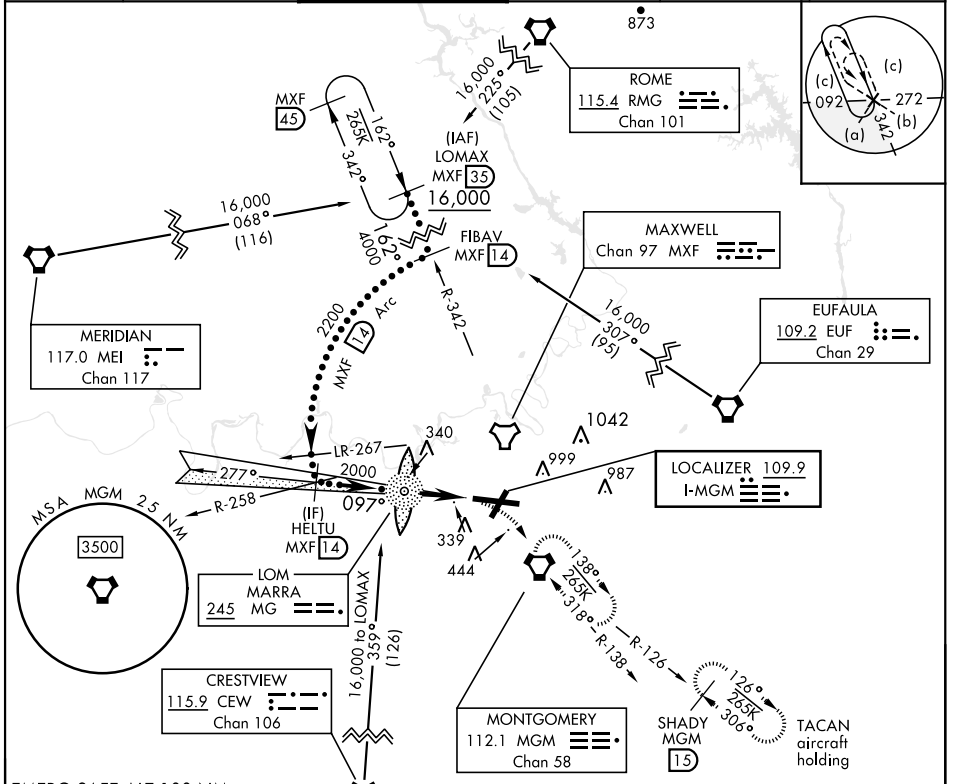
[USAF]

MONTGOMERY RGNL (DANNELLY FLD) (KMGM)

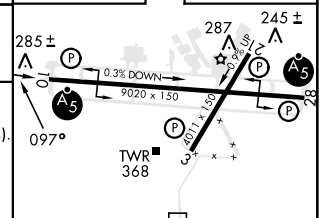
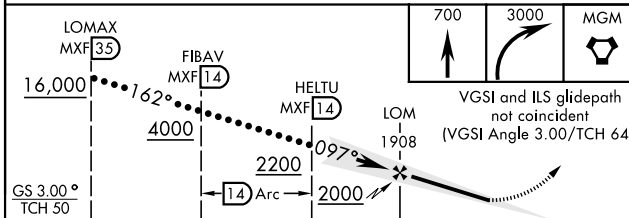


MISSED APPROACH: Climb to 700 then climbing right turn to 3000 direct MGM VORTAC and hold, continue climb-in-hold to 3000.  
TACAN aircraft continue to 3500 via MGM R-126 to SHADY and hold southeast, right turn, 306° inbound.

ATIS ★ <b>120.675</b>	APP CON <b>124.0 363.025</b>	DANNELLY TOWER★ <b>119.7(CTAF) 0360.85</b>	GND CON <b>121.7 348.6</b>	CINC DEL <b>118.3 270.3</b>	UNICOM <b>112.95</b>
--------------------------	---------------------------------	---	-------------------------------	--------------------------------	-------------------------



EMERG SAFE ALT 100 NM 5000 FROM "MGM" VORTAC	ELEV 221	TDZE 219
---	----------	----------



CATEGORY	C	D	E	FAF to MAP 5.2 NM					
S-ILS 10*	419/24	200	(200-1/2)	Knots	120	140	160	180	200
S-LOC 10**	660/45	441	(500-7/8)	Min:Sec	2:36	2:14	1:57	1:44	1:34
CIRCLING ***	800-1 1/2 579 (600-1 1/2)	860-2 639 (700-2)	860-2 1/4 639 (700-2 1/4)						

# HI-ILS Y or LOC Y RWY 10

SE-4, 03 OCT 2024 to 31 OCT 2024

SE-4, 03 OCT 2024 to 31 OCT 2024