

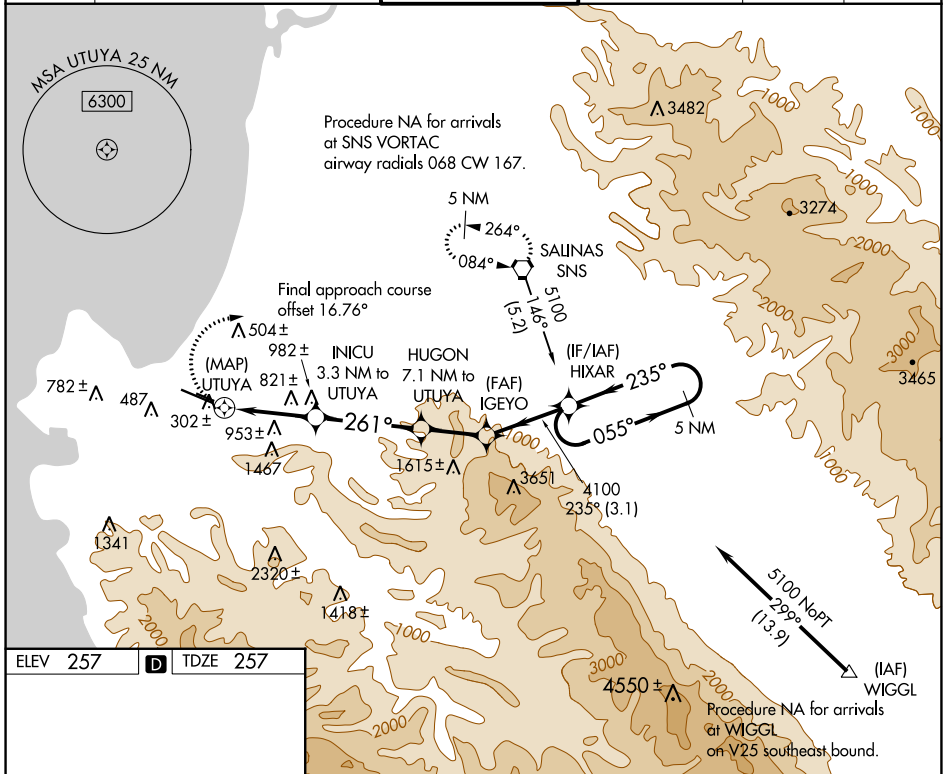
WAAS CH <b>61237</b> <b>W28A</b>	APP CRS <b>261°</b>	Rwy Idg TDZE Apt Elev	<b>7000</b> <b>257</b> <b>257</b>
--	------------------------	-----------------------------	---

# RNAV (GPS) Y RWY 28L

MONTEREY RGNL (MRY)

<p><b>▼</b> Circling NA South of Rwy 28L-10R. DME/DME RNP-0.3 NA.  <b>▲</b> Helicopter visibility reduction below RVR 4000 NA.</p>	<p>MISSED APPROACH: Climbing right turn to 6000 direct                  SNS VORTAC and hold, continue climb-in-hold to 6000.</p>
--	--

<p>ATIS <b>119.25</b></p>	<p>NORCAL APP CON  <b>133.0 251.15</b> (001°-135°)  <b>127.15 307.125</b> (136°-360°)</p>	<p>MONTEREY TOWER ★  <b>118.4</b> (CTAF) <b>0 257.8</b></p>	<p>GND CON  <b>120.875 348.6</b></p>	<p>CLNC DEL  <b>135.45</b></p>	<p>UNICOM  <b>122.95</b></p>
-------------------------------	---	---	--	------------------------------------	----------------------------------



ELEV 257 **D** TDZE 257

MIRL Rwy 10L-28R  
 HIRL Rwy 10R-28L **1**  
 REIL Rwy 28L **1**  
 REIL Rwy 10L and 28R

6000	SNS	INICU 3.3 NM to UTUYA		HUGON 7.1 NM to UTUYA	IGEYO	HIXAR	5 NM Holding Pattern	
		1.6 NM to UTUYA	≤ 3.60° TCH 47'	4100	235°	055°	5100	
		1740	3200	4100	235°	← 235°		
		0.4	1.6	1.7 NM	3.8 NM	2.4 NM	3.1 NM	
CATEGORY		A		B		C		D
LP MDA		1080/55 823 (900-1)		1080/60 823 (900-1¼)		1080-2½ 823 (900-2½)		NA
LNAV MDA		1120/55 863 (900-1)		1120/60 863 (900-1¼)		1120-2½ 863 (900-2½)		NA
<b>C</b> CIRCLING		1120-1¼		863 (900-1¼)		1260-3 1003 (1100-3)		NA

SW-2, 03 OCT 2024 to 31 OCT 2024

SW-2, 03 OCT 2024 to 31 OCT 2024