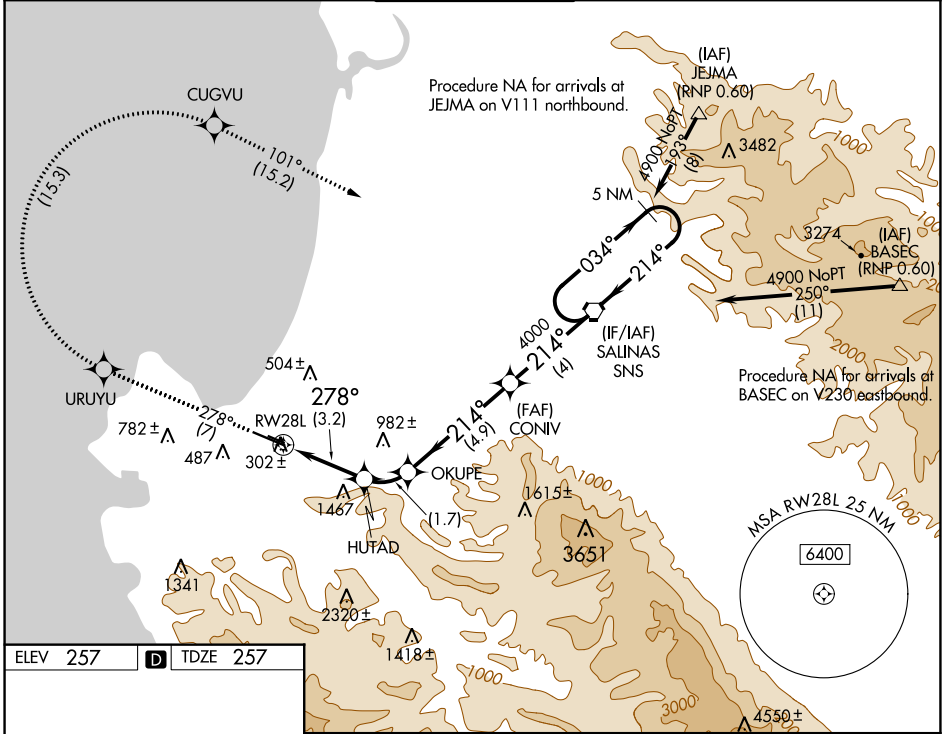


APP CRS	Rwy ldg	<b>7000</b>
<b>278°</b>	TDZE	<b>257</b>
	Apt Elev	<b>257</b>

# RNAV (RNP) Z RWY 28L

MONTEREY RGNL (MRY)

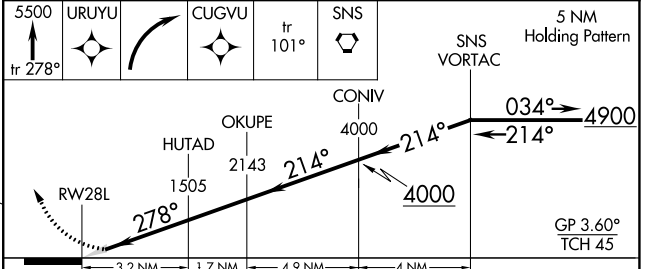
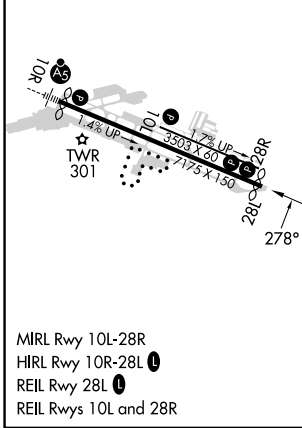
<p><b>▽</b> <b>▲</b></p> <p>For uncompensated Baro-VNAV systems, procedure NA below 0°C (32°F) or above 48°C (120°F). RF required. GPS required.</p>		<p>MISSED APPROACH: Climb to 5500 on track 278° to URUYU, right turn to CUGVU, and on track 101° to SNS VORTAC and hold.</p>			
ATIS	NORCAL APP CON	MONTEREY TOWER*	GND CON	CLNC DEL	UNICOM
<b>119.25</b>	<b>133.0 251.15</b> (001°-135°) <b>127.15 307.125</b> (136°-360°)	<b>118.4</b> (CTAF) <b>0 257.8</b>	<b>120.875 348.6</b>	<b>135.45</b>	<b>122.95</b>



SW-2, 03 OCT 2024 to 31 OCT 2024

SW-2, 03 OCT 2024 to 31 OCT 2024

ELEV 257	<b>D</b>	TDZE 257
----------	----------	----------



CATEGORY	A	B	C	D
RNP 0.10 DA	527/45	270 (300-7/8)		NA
RNP 0.15 DA	767- 1 1/2	510 (600-1 1/2)		NA
RNP 0.20 DA	1236-3	979 (1000-3)		NA

## AUTHORIZATION REQUIRED