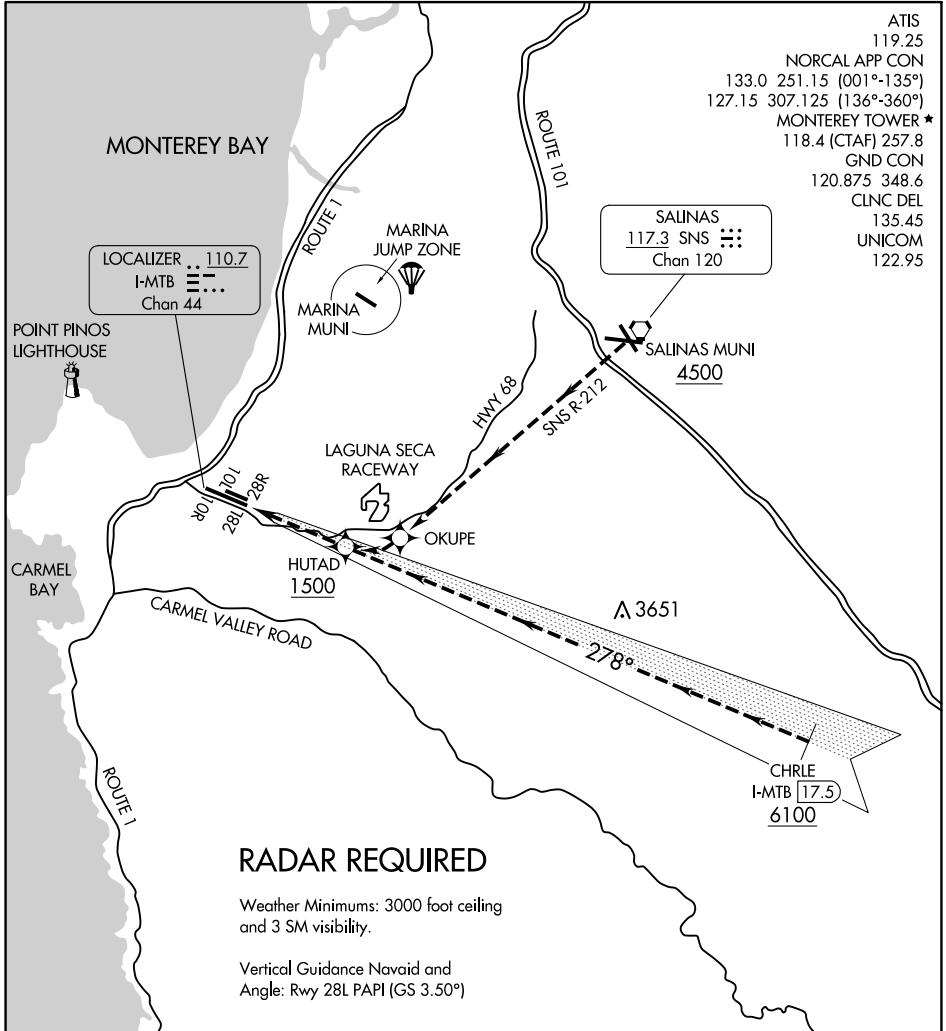


RACEWAY VISUAL RWY 28L

AL-271 (FAA)

MONTEREY RGNL (MRY)
MONTEREY, CALIFORNIA



SW-2, 03 OCT 2024 to 31 OCT 2024

SW-2, 03 OCT 2024 to 31 OCT 2024

RADAR REQUIRED

Weather Minimums: 3000 foot ceiling and 3 SM visibility.

Vertical Guidance Navaid and Angle: Rwy 28L PAPI (GS 3.50°)

1	2	3	4	5	6	7	8	9	10	11	12	13	14	15	16	17	18	19	20	21	22	23	24	25	26
---	---	---	---	---	---	---	---	---	----	----	----	----	----	----	----	----	----	----	----	----	----	----	----	----	----

RACEWAY VISUAL APPROACH RWY 28L

PROCEDURE NOT AUTHORIZED AT NIGHT.

From the east, proceed to Salinas Municipal Airport, then proceed southwest, remaining east of State Highway 68 until abeam Laguna Seca Raceway.

From the southeast, proceed from CHRLE on 278° course to HUTAD (1 mile south of Laguna Seca Raceway).

RACEWAY VISUAL RWY 28L

Amdt 1 31DEC20

36°35'N-121°51'W

MONTEREY, CALIFORNIA
MONTEREY RGNL (MRY)