

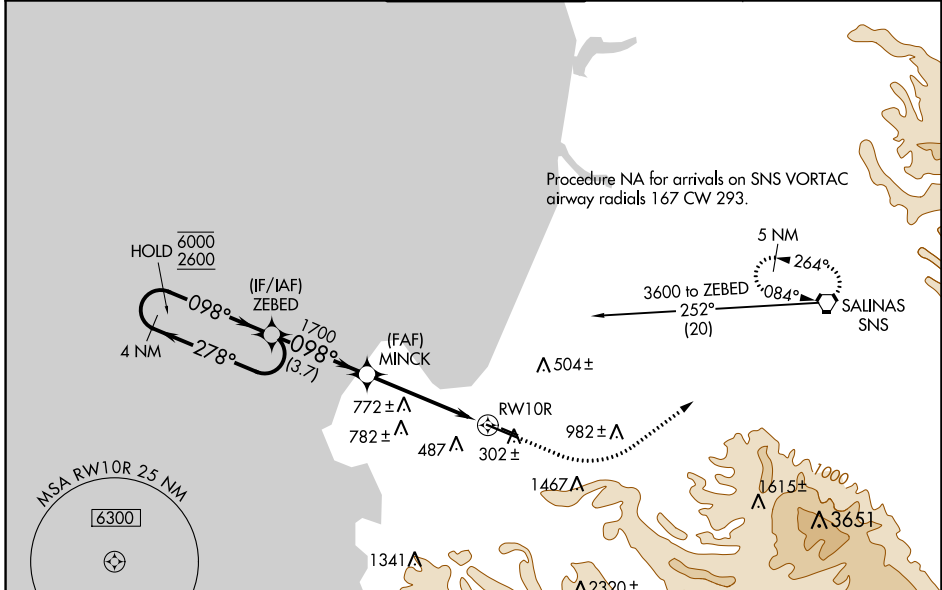
WAAS CH 69602 W10A	APP CRS 098°	Rwy Idg TDZE Apt Elev	7000 198 257
--	------------------------	-----------------------------	---

RNAV (GPS) RWY 10R

MONTEREY RGNL (MRY)

RNP APCH.	MALSRS	MISSED APPROACH: Climb to 1000 then climbing left turn to 5000 direct SNS VORTAC and hold, continue climb-in-hold to 5000.
<p>⚠ Circling NA south of Rwy 10R and 28L. For uncompensated Baro-VNAV systems, LNAV/VNAV NA below 0°C or above 54°C. For inop ALS, increase LPV visibility all Cats to 1½ SM, LNAV/VNAV visibility all Cats and LNAV Cat C/D to 2½ SM.</p>		

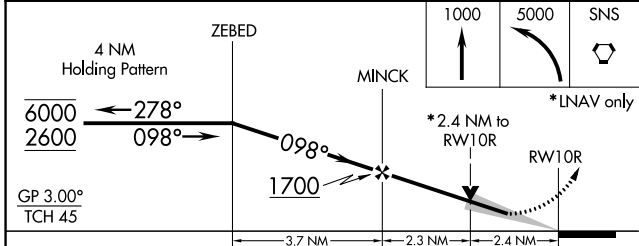
ATIS 119.25	NORCAL APP CON 133.0 251.15 (001°-135°) 127.15 307.125 (136°-360°)	MONTEREY TOWER ★ 118.4 (CTAF) 257.8	GND CON 120.875 348.6	CLNC DEL 135.45	UNICOM 122.95
-----------------------	--	--	---------------------------------	---------------------------	-------------------------



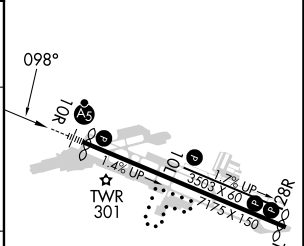
SW-2, 03 OCT 2024 to 31 OCT 2024

SW-2, 03 OCT 2024 to 31 OCT 2024

ELEV 257	D TDZE 198
----------	-------------------



CATEGORY	A	B	C	D
LPV DA		718-1½	520 (500-1½)	
LNAV/VNAV DA		789-1¾	591 (600-1¾)	
LNAV MDA	980/24 782 (800-½)	980/40 782 (800-¾)	980-1¾ 782 (800-1¾)	
C CIRCLING	980-1 723 (800-1)	980-1¼ 723 (800-1¼)	1280-3 1023 (1100-3)	NA



MIRL Rwy 10L-28R
HIRL Rwy 10R-28L **Ⓛ**
REIL Rwy 28L **Ⓛ**
REIL Rwy 10L and 28R