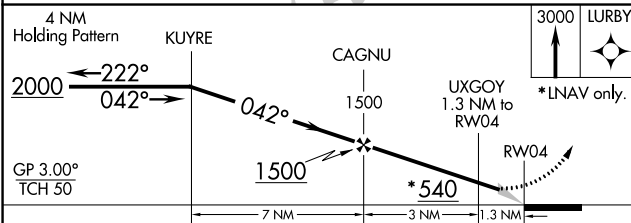
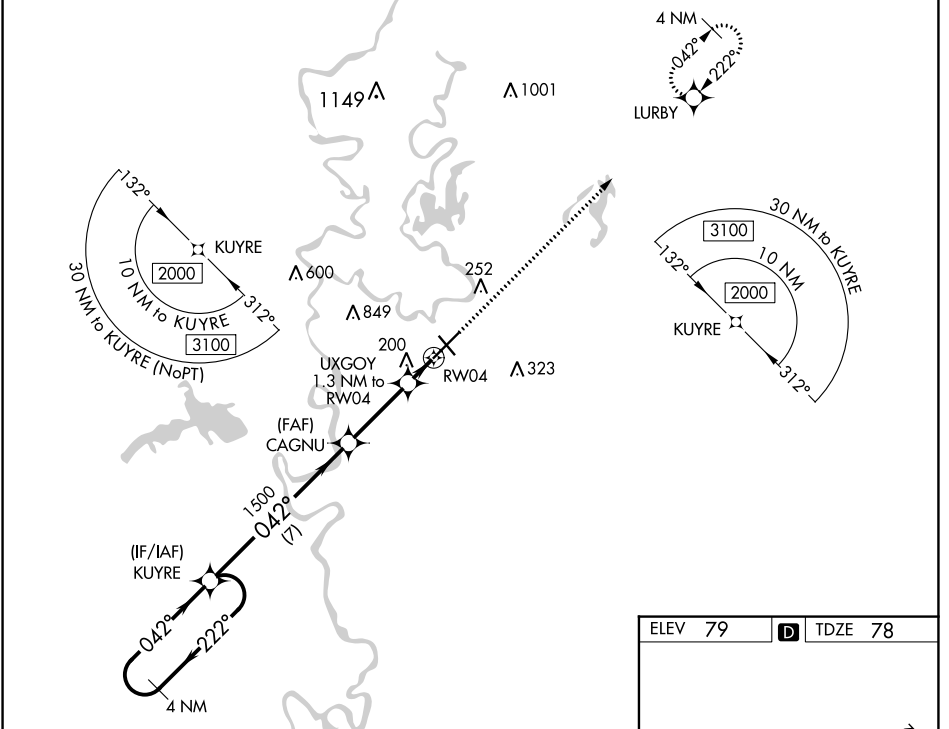


WAAS CH <b>56410</b> <b>W04A</b>	APP CRS <b>042°</b>	Rwy Idg <b>7504</b> TDZE <b>78</b> Apt Elev <b>79</b>
--	------------------------	---

# RNAV (GPS) RWY 4

MONROE RGNL (MLU)

RNP APCH.		MALSR MISSED APPROACH: Climb to 3000 direct LURBY and hold.			
⚠ For uncompensated Baro-VNAV systems, LNAV/VNAV NA below -15°C or above 54°C. For inop ALS, increase LNAV/VNAV all Cats visibility to RVR 4500. Circling ASR Rwy 14 NA at night. ** RVR 1800 authorized with use of FD or AP or HUD to DA.					
ATIS <b>125.05</b>	MONROE APP CON* <b>118.15 290.475</b>	MONROE TOWER* <b>118.9 (CTAF) 0 257.8</b>	GND CON <b>121.9</b>	CLNC DEL <b>121.65</b>	UNICOM <b>122.95</b>



ELEV 79	D	TDZE 78
---------	---	---------

REIL Rws 14 and 32  
MIRL Rwy 14-32  
HIRL Rwy 4-22

SC-4, 31 OCT 2024 to 28 NOV 2024

SC-4, 31 OCT 2024 to 28 NOV 2024