


| | | | |
|--|------------------------|---|--------------|
| WAAS CH 86824 W27A | APP CRS 270° | Rwy Idg TDZE 581 Apt Elev 590 | 10002 |
|--|------------------------|---|--------------|

RNAV (GPS) RWY 27

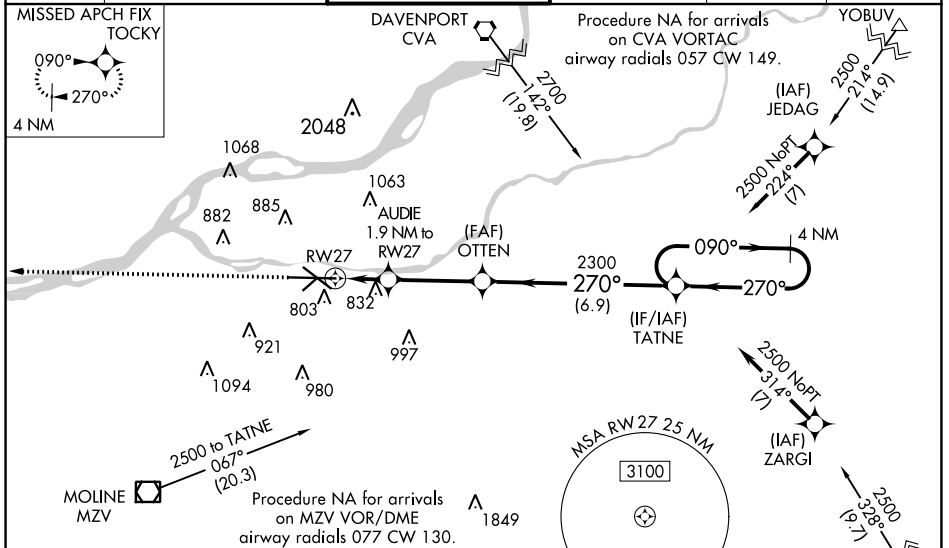
QUAD CITIES INTL (MLI)

⚠ Circling to Rwy 5 NA at night. Baro-VNAV NA when using Davenport altimeter setting. For uncompensated Baro-VNAV systems, LNAV/VNAV NA below -26°C (-14°F) or above 40°C (104°F). DME/DME RNP-0.3 NA. When local altimeter setting not received, use Davenport altimeter setting; increase LPV DA to 828 feet and LNAV/VNAV DA to 1233 feet and LNAV/VNAV visibility all Cats ½ SM; increase all MDA 60 feet and LNAV visibility Cats C and D ¼ SM. Circling visibility Cats C and D ¼ SM. For inoperative ALS, increase LNAV/VNAV visibility all Cats to 2 SM, LNAV visibility Cats C and D to 1 ½ SM. When using Davenport altimeter setting increase LNAV visibility Cats C and D to 1 ½ SM.
****RVR 1800 authorized with use of FD or AP or HUD to DA.**

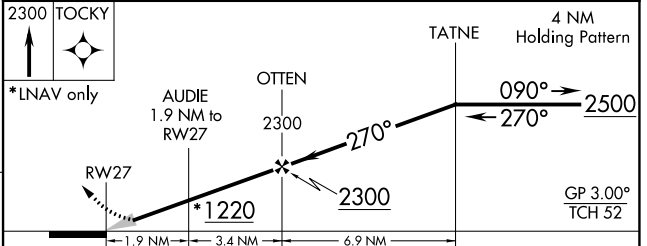
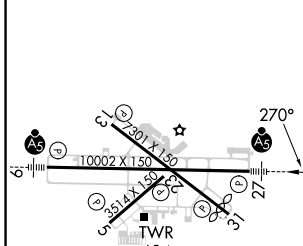
MALSR 

MISSED APPROACH:
Climb to 2300 direct
TOCKY and hold.

| | | | | | |
|----------------------|--|--|-------------------------|---------------------------|-------------------------|
| ATIS 121.2 | QUAD CITY APP CON * 125.95 257.8 | QUAD CITY TOWER * 119.4(CTAF) 0 269.55 | GND CON 121.9 | CLNC DEL 124.05 | UNICOM 122.95 |
|----------------------|--|--|-------------------------|---------------------------|-------------------------|



| | | |
|----------|----------|----------|
| ELEV 590 | D | TDZE 581 |
|----------|----------|----------|



| CATEGORY | A | B | C | D |
|--------------|-----------------------|-----------------------|-----------------------|---------------------------|
| LPV DA** | 781/24 | | 200 (200-½) | |
| LNAV/VNAV DA | 1186-1 ½ | | 605 (600-1 ½) | |
| LNAV MDA | 1100/24 | 519 (600-½) | 1100/55 | 519 (600-1) |
| CIRCLING | 1140-1 550 (600-1) | 1200-1 610 (700-1) | 1320-2 730 (800-2) | 1420-2 ¾ 830 (900-2 ¾) |

MIRL Rwy 5-23
REIL Rwy 13 and 31
HIRL Rwy 9-27 and 13-31

EC-3, 03 OCT 2024 to 31 OCT 2024

EC-3, 03 OCT 2024 to 31 OCT 2024