

WAAS CH 50411 W14A	APP CRS 140°	Rwy Idg 9618 TDZE 26 Apt Elev 26
--	------------------------	---

RNAV (GPS) RWY 14

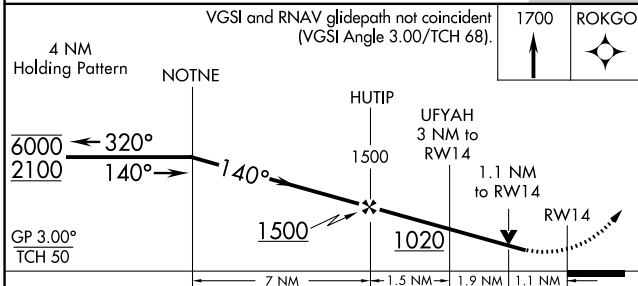
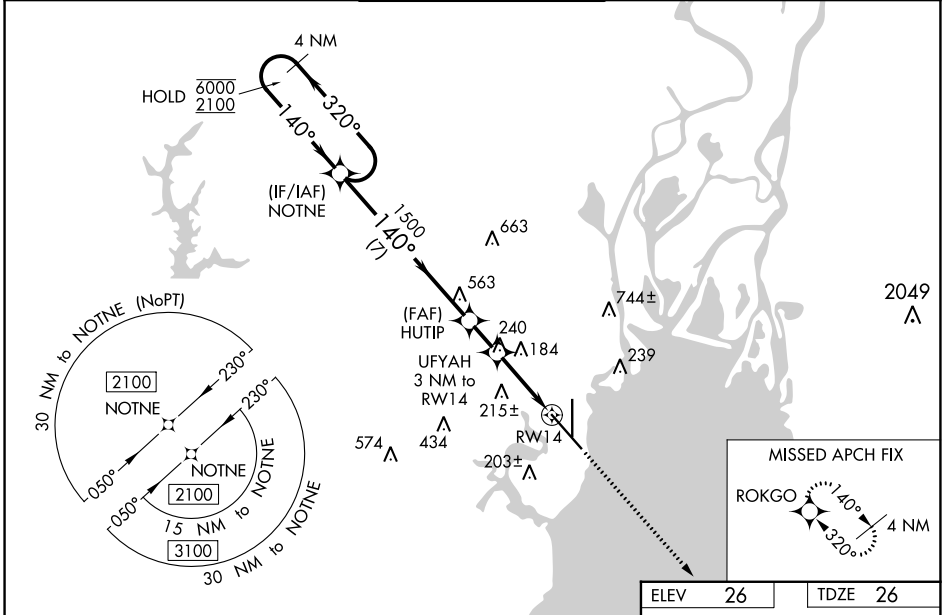
MOBILE INTL (BfM)

RNP APCH - GPS.

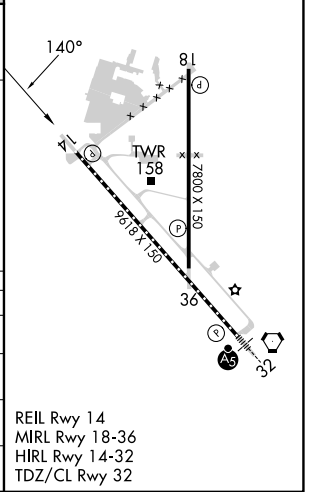
⚠ Rwy 14 helicopter visibility reduction below $\frac{3}{4}$ SM NA. For uncompensated Baro-VNAV systems, LNAV/VNAV NA below -2°C or above 54°C.

MISSED APPROACH:
Climb to 1700 direct ROKGO and hold.

ATIS 135.575	MOBILE APP CON * 118.5 269.3	INTERNATIONAL TOWER* 118.8 (CTAF) 0 251.1	GND CON 121.7 239.3	UNICOM 122.95
------------------------	--	---	-------------------------------	-------------------------



ELEV 26	TDZE 26
---------	---------



CATEGORY	A	B	C	D
LPV DA		308- $\frac{7}{8}$	282 (300- $\frac{3}{4}$)	
LNAV/VNAV DA		396-1	370 (400-1)	
LNAV MDA	440-1	414 (500-1)	440-1 $\frac{1}{8}$	414 (500-1 $\frac{1}{8}$)
C CIRCLING	680-1	654 (700-1)	680-1 $\frac{3}{4}$ 654 (700-1 $\frac{3}{4}$)	1100-3 1074 (1100-3)

REIL Rwy 14
MIRL Rwy 18-36
HIRL Rwy 14-32
TDZ/CL Rwy 32

SE-4, 05 SEP 2024 to 03 OCT 2024

SE-4, 05 SEP 2024 to 03 OCT 2024