

VOR/DME MSO 112.8 Chan 75	APP CRS 339°	Rwy Idg TDZE Apt Elev N/A N/A 3206
---	------------------------	--

VOR-B

MISSOULA MONTANA (MSO)

RADAR required for procedure entry at JEPSN. DME required.

MISSOULA TOWER ★ **118.4 (CTAF) 0 377.175**

GND CON **121.9**

UNICOM **122.95**

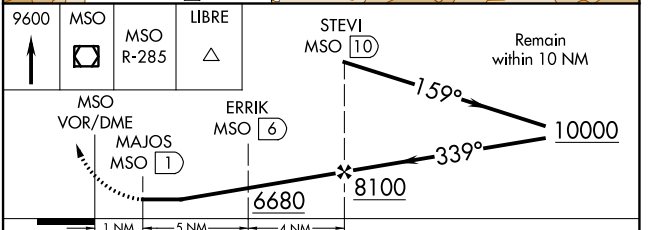
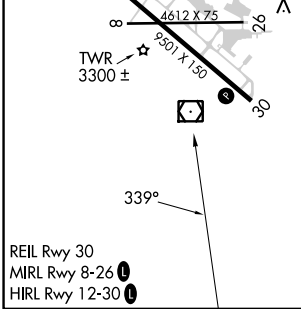
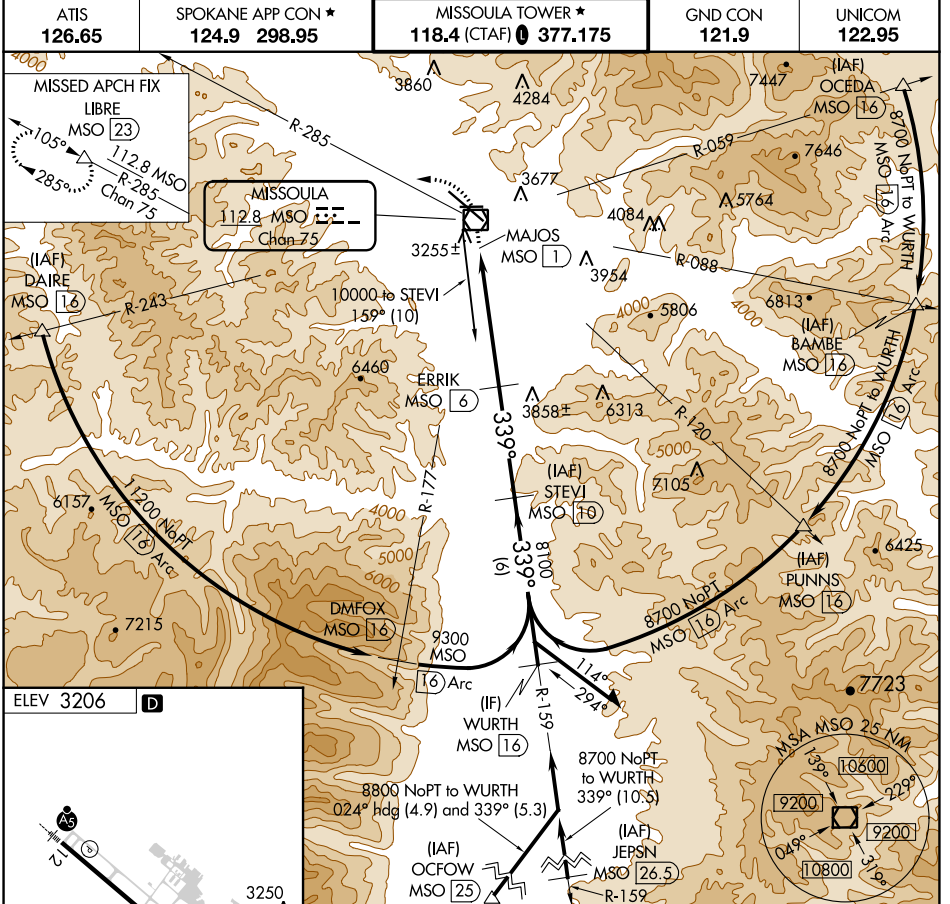
ATIS **126.65**

SPOKANE APP CON ★ **124.9 298.95**

MISSOULA APCH FIX LIBRE MSO [23]
112.8 MSO R-285 Chan 75
105° 285°

MISSOULA 112.8 MSO Chan 75

MISSED APPROACH: Climb to 9600 direct MSO VOR/DME and on MSO VOR/DME R-285 to LIBRE/MSO 23 DME and hold, continue climb-in-hold to 9600.



CATEGORY	A	B	C	D
☑ CIRCLING	4920-1¼ 1714 (1800-1¼)	4920-1½ 1714 (1800-1½)	4920-3 1714 (1800-3)	5160-3 1954 (2000-3)

NW-1, 03 OCT 2024 to 31 OCT 2024

NW-1, 03 OCT 2024 to 31 OCT 2024