

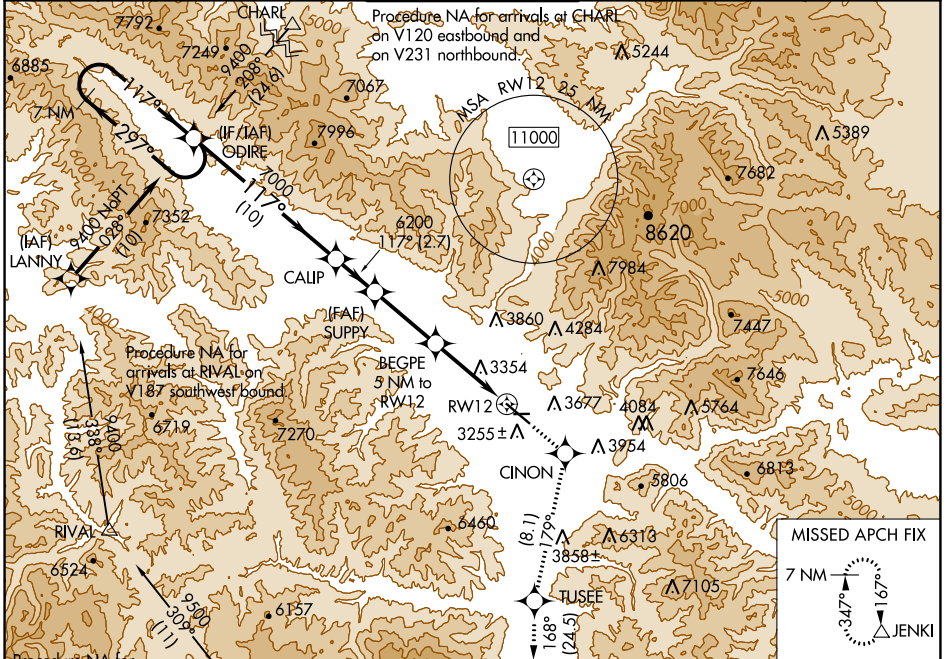
WAAS CH 65715 W12B	APP CRS 117°	Rwy Idg TDZE Apt Elev	9501 3200 3206
--	------------------------	-----------------------------	---

RNAV (GPS) Y RWY 12

MISSOULA MONTANA (MISO)

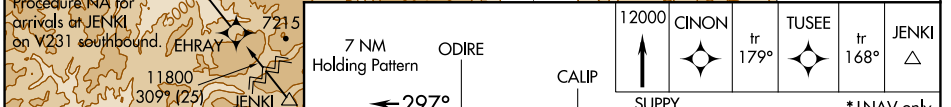
RNP APCH.	MALS R	MISSED APPROACH: (Do not exceed 200K until CINON) Climb to 12000 direct CINON and on track 179° to TUSEE and on track 168° to JENKI and hold, continue climb-in-hold to 12000. ## Missed approach requires minimum climb of 325 feet per NM to 7700.
<p>⚠ Circling N/A for Cats C and D northeast of Rwy 12-30. Inop table does not apply to LNAV # Cats C/D. Inop table does not apply to LPV † all Cats. **RVR 1800 authorized with use of FD or AP or HUD to DA.</p> <p>⚠ -12°C</p>		

ATIS 126.65	SPOKANE APP CON * 124.9 298.95	MISSOULA TOWER * 118.4 (CTAF) 0 377.175	GND CON 121.9	UNICOM 122.95
-----------------------	--	---	-------------------------	-------------------------

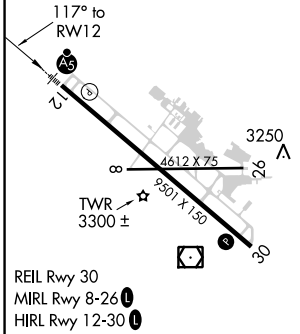


NW-1, 31 OCT 2024 to 28 NOV 2024

NW-1, 31 OCT 2024 to 28 NOV 2024



ELEV 3206	D	TDZE 3200
-----------	----------	-----------



GP 3.00° TCH 55	7 NM Holding Pattern	ODIRE	CALIP	SUPPLY	BEGPE 5 NM to RWY 12	TUSEE	JENKI
9400	297°	117°	7000	6200	*4840	179°	168°
				10 NM	2.7 NM	4.3 NM	3.8 NM
							1.2 NM
CATEGORY	A	B	C	D			
LPV DA **	3400/24				200 (200-½)		
LPV DA †	4229-4				1029 (1100-4)		
LNAV MDA ##	3640/24		440 (500-½)		3640/40		440 (500-¾)
LNAV MDA #	4520/40 1320 (1400-¾)		4520/55 1320 (1400-1)		4520-3		1320 (1400-3)
C CIRCLING	4520-1¼ 1314 (1400-1¼)		4700-1½ 1494 (1500-½)		4700-3		5140-3 1934 (2000-3)