

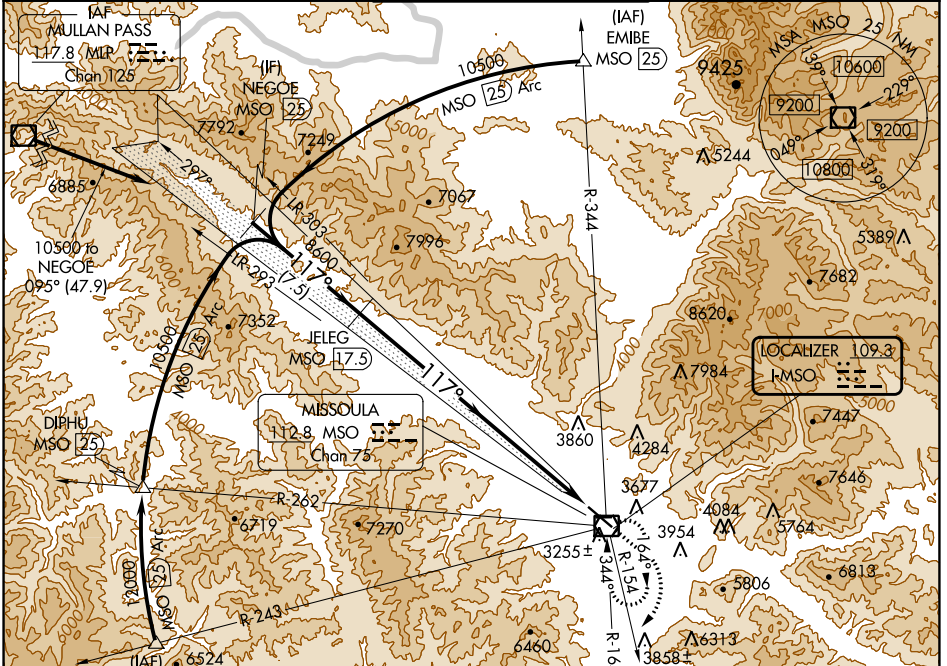
LOC I-MSO 109.3	APP CRS 117°	Rwy ldg TDZE Apt Elev	9501 3200 3206
---------------------------	------------------------	-----------------------------	---

ILS Y RWY 12

MISSOULA MONTANA (MISO)

DME required.		MALSRL	MISSED APPROACH: Climb to 6200 then climbing right turn to 8500 on MSO VOR/DME R-154 then climbing left turn to 9100 direct MSO VOR/DME and hold.
NA	Inoperative table does not apply.	AS	
-12°C			

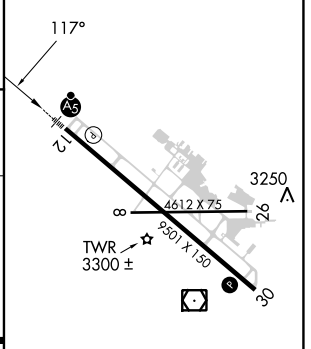
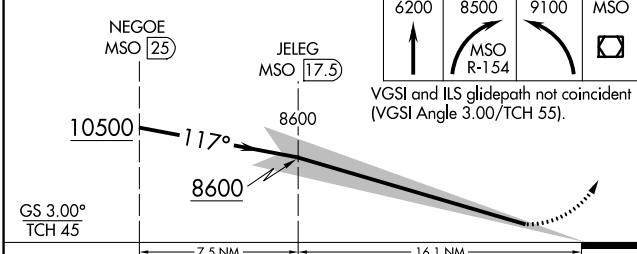
ATIS 126.65	SPOKANE APP CON * 124.9 298.95	MISSOULA TOWER * 118.4 (CTAF) 377.175	GND CON 121.9	UNICOM 122.95
-----------------------	--	---	-------------------------	-------------------------



NW-1, 03 OCT 2024 to 31 OCT 2024

NW-1, 03 OCT 2024 to 31 OCT 2024

ELEV 3206	TDZE 3200
-----------	-----------



CATEGORY	A	B	C	D
S-ILS 12		5022-7	1822 (1900-7)	

REIL Rwy 30	MIRL Rwy 8-26	HIRL Rwy 12-30
-------------	---------------	----------------