

# SLAYER FOUR DEPARTURE (RNAV)

AL-264 (FAA)

MINNEAPOLIS, MINNESOTA

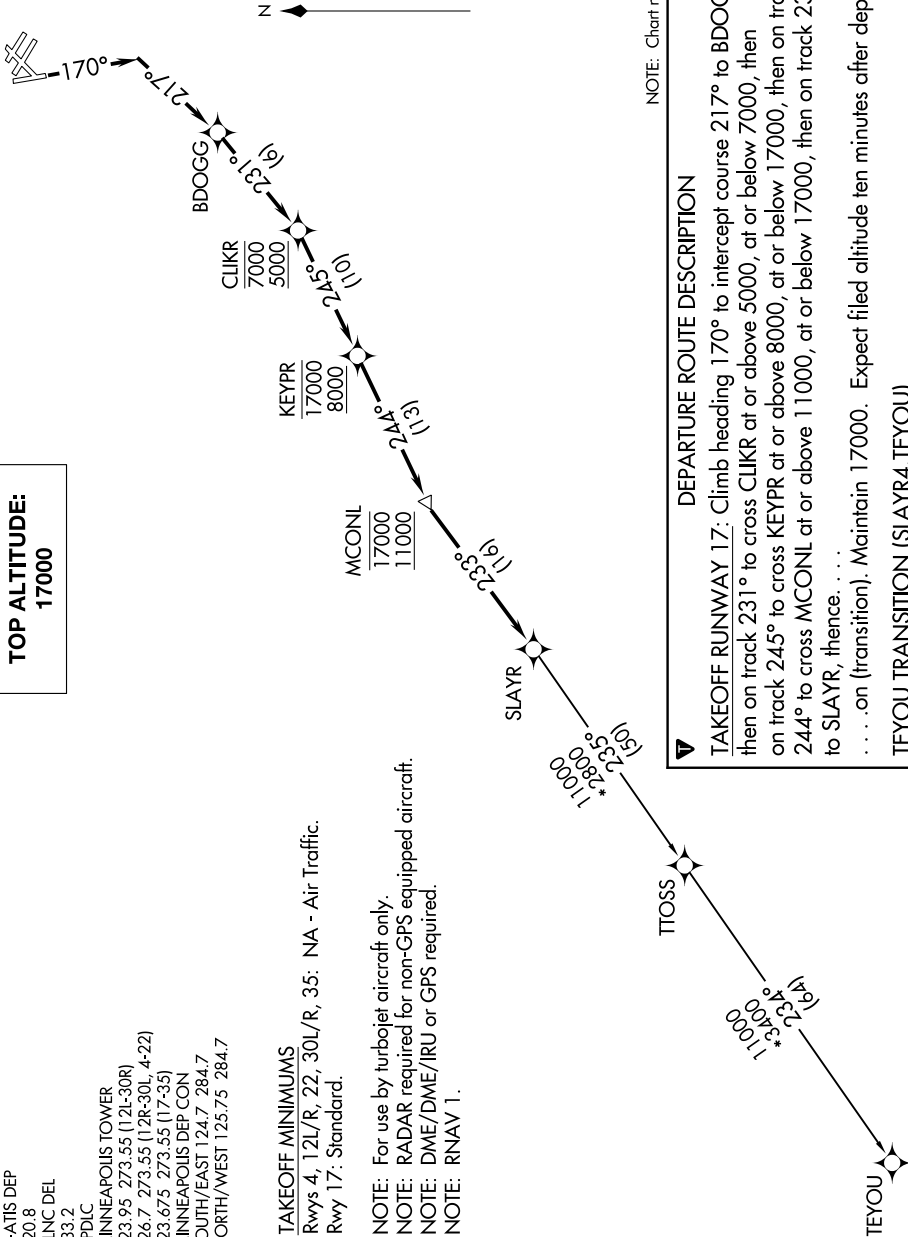
NC-1, 03 OCT 2024 to 31 OCT 2024

**TOP ALTITUDE:  
17000**

D-ATIS DEP  
120.8  
CLNC DEL  
133.2  
CPDIC  
MINNEAPOLIS TOWER  
123.95 273.55 (12L-30R)  
126.7 273.55 (12R-30L, 4-22)  
123.675 273.55 (17-35)  
MINNEAPOLIS DEP CON  
SOUTH/EAST 124.7 284.7  
NORTH/WEST 125.75 284.7

**TAKEOFF MINIMUMS**  
Rwys 4, 12L/R, 22, 30L/R, 35: NA - Air Traffic.  
Rwy 17: Standard.

**NOTE:** For use by turbojet aircraft only.  
**NOTE:** RADAR required for non-GPS equipped aircraft.  
**NOTE:** DME/DME/IRU or GPS required.  
**NOTE:** RNAV 1.



NOTE: Chart not to scale.

### DEPARTURE ROUTE DESCRIPTION

**TAKEOFF RUNWAY 17:** Climb heading 170° to intercept course 217° to BDOGG, then on track 231° to cross CLIKR at or above 5000, at or below 7000, then on track 245° to cross KEYPR at or above 8000, at or below 17000, then on track 244° to cross MCONL at or above 11000, at or below 17000, then on track 233° to SLAYR, thence. . . . .  
 . . . . . on (transition). Maintain 17000. Expect filed altitude ten minutes after departure.

**TEYOU TRANSITION (SLAYR4.TEYOU)**

# SLAYER FOUR DEPARTURE (RNAV)

(SLAYR4.SLAYR) 17AUG17

MINNEAPOLIS, MINNESOTA

MINNEAPOLIS-ST PAUL INTL/WOLD-CHAMBERLAIN (MSP)

NC-1, 03 OCT 2024 to 31 OCT 2024