

SKETR FIVE ARRIVAL

MINNEAPOLIS APP CON
126.95 335.5
D-ATIS ARR
135.35 239.275

MINNEAPOLIS
115.3 MSP
Chan 100

NOTE: RADAR required.
NOTE: DME required.
NOTE: Chart not to scale.

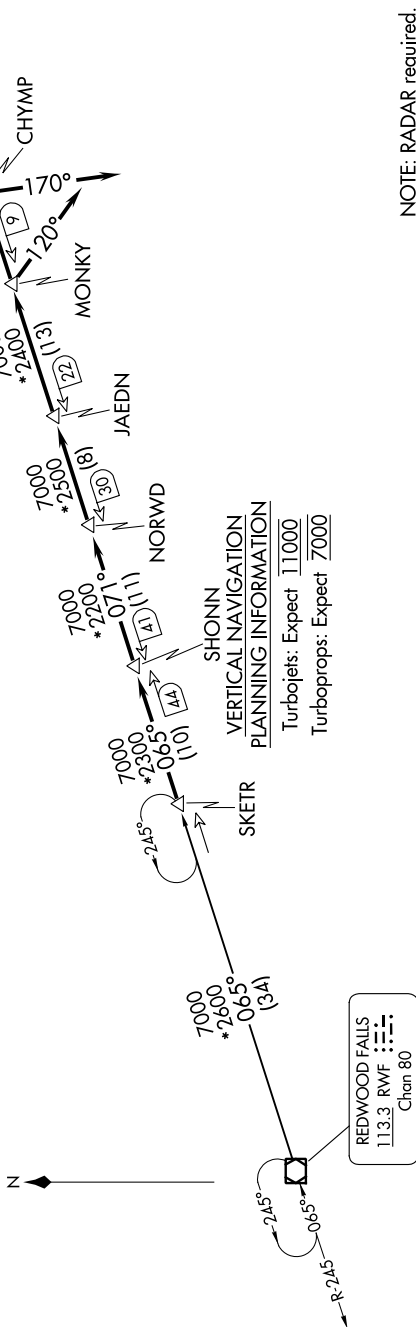
ARRIVAL ROUTE DESCRIPTION

REDWOOD FALLS TRANSITION (RWF.SKETR5): From over RWF VOR/DME on RWF R-065 to SKETR/34 DME. Thence

. . . . From over SKETR/RWF 34 DME via RWF R-065 to SHONN/RWF 44 DME, then via MSP R-251 to NORWD/MSP 30 DME, then via MSP R-251 to JAEDN/MSP 22 DME, then via MSP R-251 to MONKY/MSP 9 DME, thence

LANDING MSP RUNWAY 30L/R: depart MONKY/MSP 9 DME heading 120° for RADAR vectors to final approach course.

LANDING MSP RUNWAY 35: depart MONKY/MSP 9 DME via MSP R-251 to CHYMP/MSP 8 DME, then via heading 170° for RADAR vectors to final approach course.
ALL OTHER RUNWAYS: via RADAR vectors to final approach course.



VERTICAL NAVIGATION
PLANNING INFORMATION
Turbojets: Expect 11000
Turboprops: Expect 7000