

| | | |
|--|------------------------|---|
| WAAS CH 60925 W30B | APP CRS 301° | Rwy Idg 8000 TDZE 822 Apt Elev 842 |
|--|------------------------|---|

RNAV (GPS) Z RWY 30R

MINNEAPOLIS-ST PAUL INTL/WOLD-CHAMBERLAIN (MSP)

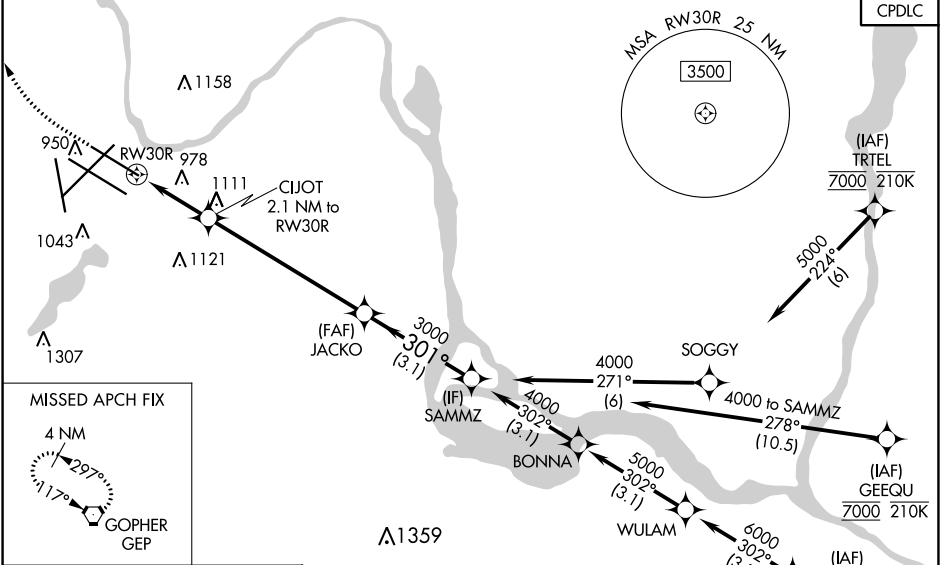
⚠ For uncompensated Baro-VNAV systems, LNAV/VNAV NA below -19°C (-2°F) or above 54°C (130°F). DME/DME RNP-0.3 NA. Simultaneous approaches authorized with Rwy 30L and ILS V Rwy 35 (CONVERGING). LNAV procedure NA during simultaneous operations. Use of FD or AP providing RNAV track guidance required during simultaneous operations. For inop ALS, increase LNAV/VNAV Cat E and LNAV Cat E visibility to 1½ SM. Inop table does not apply to LPV all Cats.

MAISF

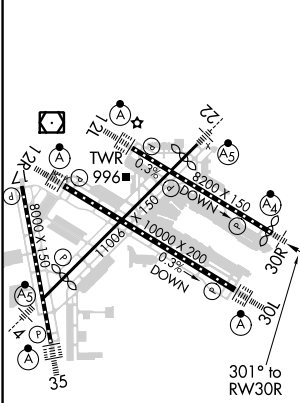


MISSED APPROACH: Climb to 1300, then climbing right turn to 3000 direct GEP VORTAC and hold.

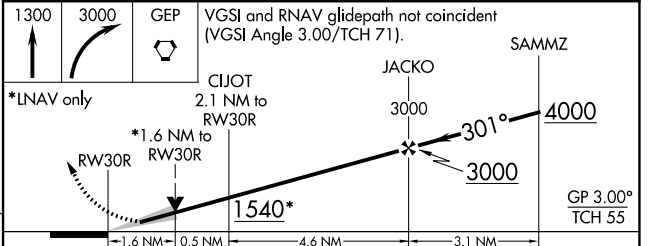
| | | | | |
|---|--|---|---|--------------------------|
| D-ATIS ARR 135.35 239.275 DEP 120.8 | MINNEAPOLIS APP CON 118.725 335.65 (Rwy 35) 119.3 335.65 (12L-30R, 4-22, 17) 126.95 335.65 (12R-30L) | MINNEAPOLIS TOWER 123.675 273.55 (17-35) 123.95 273.55 (12L-30R) 126.7 273.55 (12R-30L, 4-22) | GND CON N 121.8 348.6 S 121.9 348.6 W 127.925 348.6 | CLNC DEL 133.2 |
|---|--|---|---|--------------------------|



| | | |
|----------|----------|----------|
| ELEV 842 | D | TDZE 822 |
|----------|----------|----------|



HIRL all Rwys
REIL Rwy 17
TDZ/CL Rwys 12L, 12R, 30L, and 35



| CATEGORY | A | B | C | D | E |
|-------------------|---------|-------------|-------------------------|-------------------------|------------------------|
| LPV DA | | 1072/40 | 250 (300-¾) | | |
| LNAV/VNAV DA | | 1316-1¾ | 494 (500-1¾) | | |
| LNAV MDA | 1400/40 | 578 (600-¾) | 1400-1¾ | 578 (600-1¾) | |
| C CIRCLING | 1400-1 | 558 (600-1) | 1460-1¾ 618 (700-1¾) | 1660-2¾ 818 (900-2¾) | 1800-3 958 (1000-3) |