

(NITZR.NITZR3) 18032

# NITZR THREE ARRIVAL (RNAV)

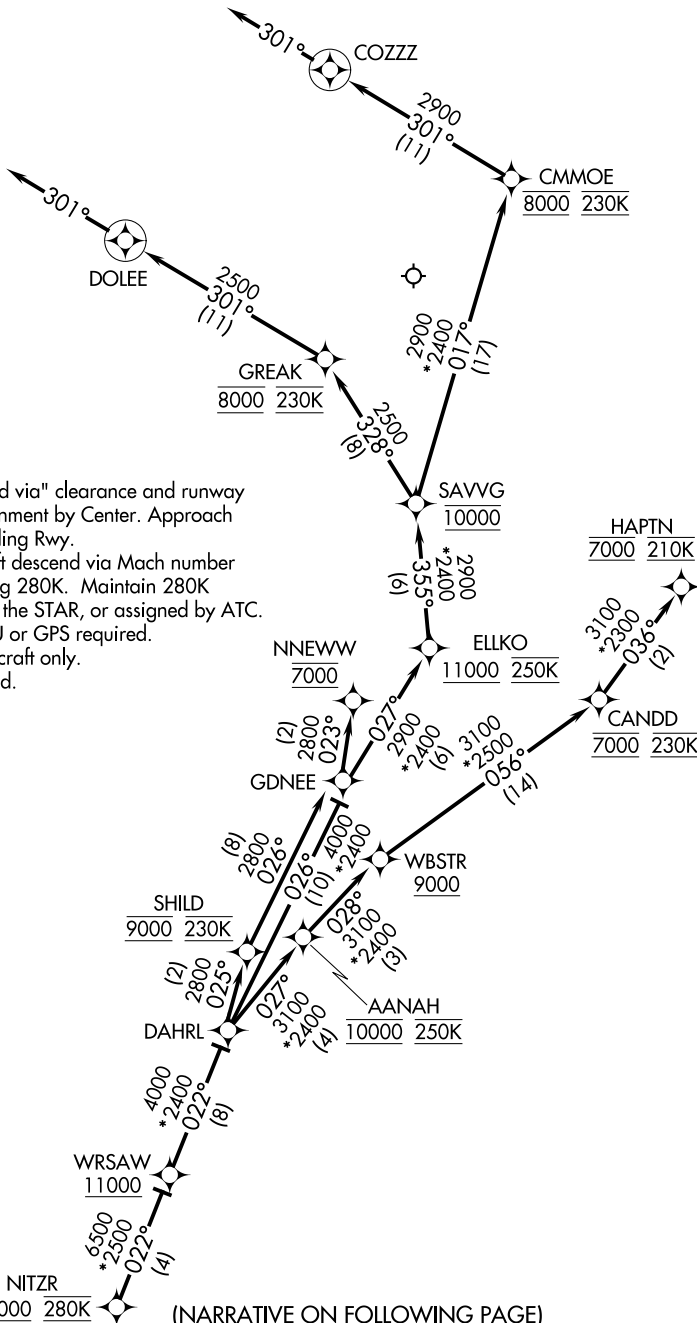
MINNEAPOLIS-ST PAUL INTL/WOLD-CHAMBERLAIN (MSP)

Arrival Routes

AI-264 (FAA)

MINNEAPOLIS, MINNESOTA

MINNEAPOLIS APP CON  
135.475 335.5  
D-ATIS ARR  
135.35 239.275



NOTE: Expect "descend via" clearance and runway transition assignment by Center. Approach will assign landing Rwy.

NOTE: Turbojet aircraft descend via Mach number until intercepting 280K. Maintain 280K until slowed by the STAR, or assigned by ATC.

NOTE: DME/DME/IRU or GPS required.

NOTE: For turbojet aircraft only.

NOTE: RADAR required.

NOTE: RNAV 1.

NOTE: Chart not to scale.

(NARRATIVE ON FOLLOWING PAGE)

NC-1, 31 OCT 2024 to 28 NOV 2024

NC-1, 31 OCT 2024 to 28 NOV 2024

# NITZR THREE ARRIVAL (RNAV)

(NITZR.NITZR3) 05JAN17

Arrival Routes

MINNEAPOLIS, MINNESOTA

MINNEAPOLIS-ST PAUL INTL/WOLD-CHAMBERLAIN (MSP)