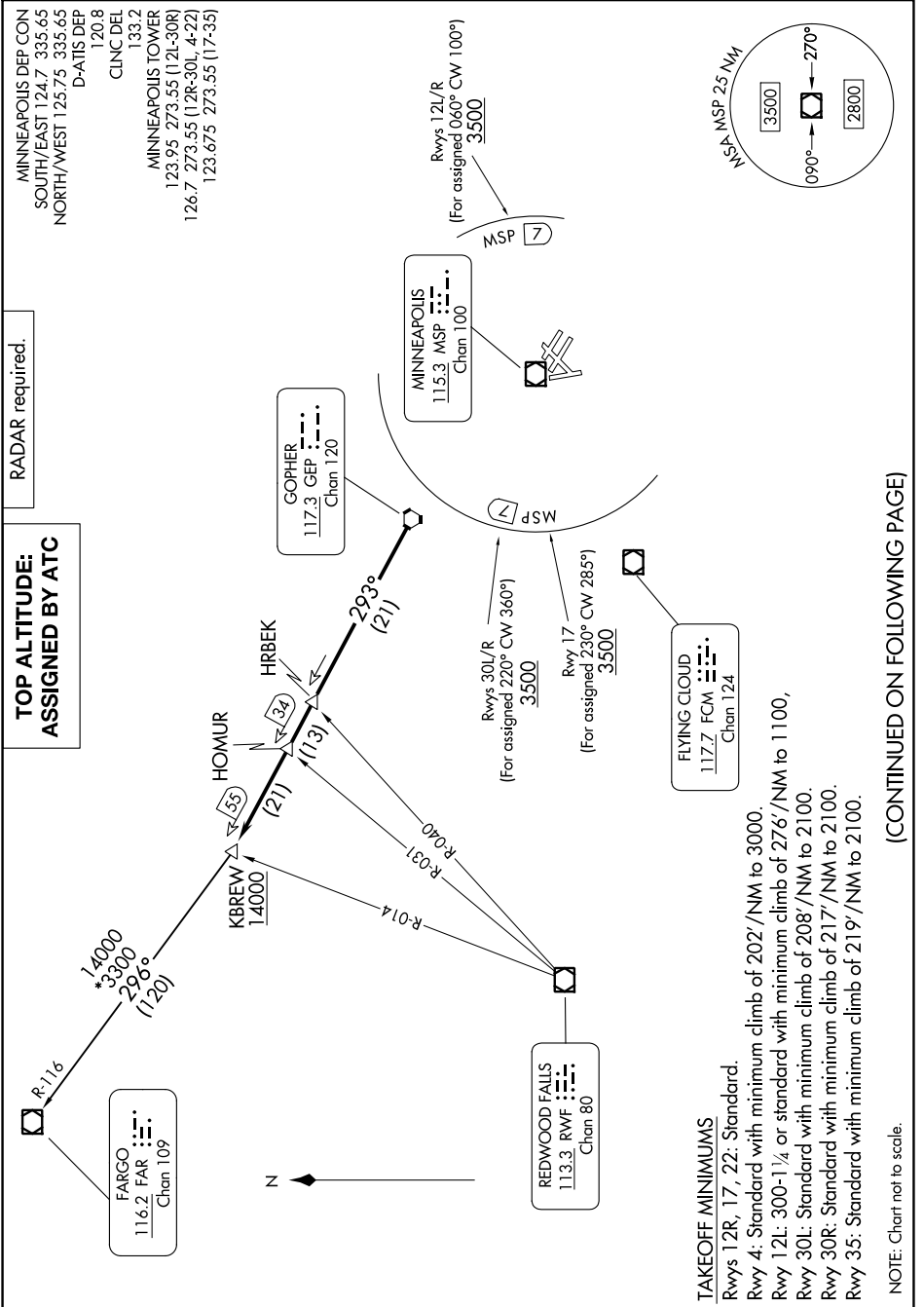


(KBREW2.KBREW) 24137
KBREW TWO DEPARTURE

MINNEAPOLIS-ST PAUL INTL/WOLD-CHAMBERLAIN (MSP)
 AL-264 (FAA) MINNEAPOLIS, MINNESOTA

NC-1, 31 OCT 2024 to 28 NOV 2024



RADAR required.

**TOP ALTITUDE
 ASSIGNED BY ATC**

MINNEAPOLIS DEP CON
 SOUTH/EAST 124.7 335.65
 NORTH/WEST 125.75 335.65
 D-ATIS DEP
 120.8
 CLNC DEL
 133.2
 MINNEAPOLIS TOWER
 123.95 273.55 (12L-30R)
 126.7 273.55 (12R-30L, 4-22)
 123.675 273.55 (17-35)

Rwys 12L/R
 (For assigned 060° CW 100°)
 3500
 MSP 7

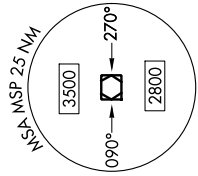
MINNEAPOLIS
 115.3 MSP
 Chan 100

GOPHER
 117.3 GEP
 Chan 120

Rwys 30L/R
 (For assigned 220° CW 360°)
 3500
 MSP 7

Rwy 17
 (For assigned 230° CW 285°)
 3500

FLYING CLOUD
 117.7 FCM
 Chan 124



FARGO
 116.2 FAR
 Chan 109

REDWOOD FALLS
 113.3 RWF
 Chan 80



TAKEOFF MINIMUMS
 Rws 12R, 17, 22: Standard.
 Rwy 4: Standard with minimum climb of 202'/NM to 3000.
 Rwy 12L: 300-1/4 or standard with minimum climb of 276'/NM to 1100,
 Rwy 30L: Standard with minimum climb of 208'/NM to 2100.
 Rwy 30R: Standard with minimum climb of 217'/NM to 2100.
 Rwy 35: Standard with minimum climb of 219'/NM to 2100.

(CONTINUED ON FOLLOWING PAGE)

NOTE: Chart not to scale.

NC-1, 31 OCT 2024 to 28 NOV 2024

(KBREW2.KBREW) 16MAY24
KBREW TWO DEPARTURE

MINNEAPOLIS, MINNESOTA
 MINNEAPOLIS-ST PAUL INTL/WOLD-CHAMBERLAIN (MSP)