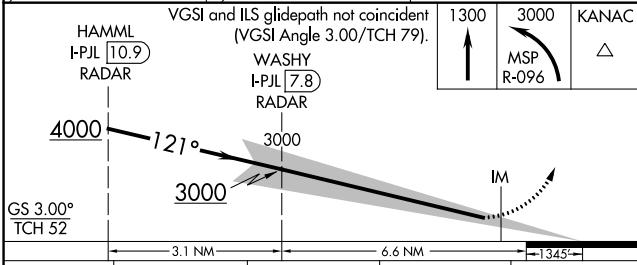
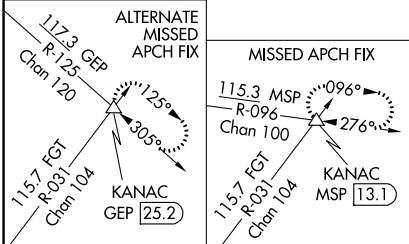
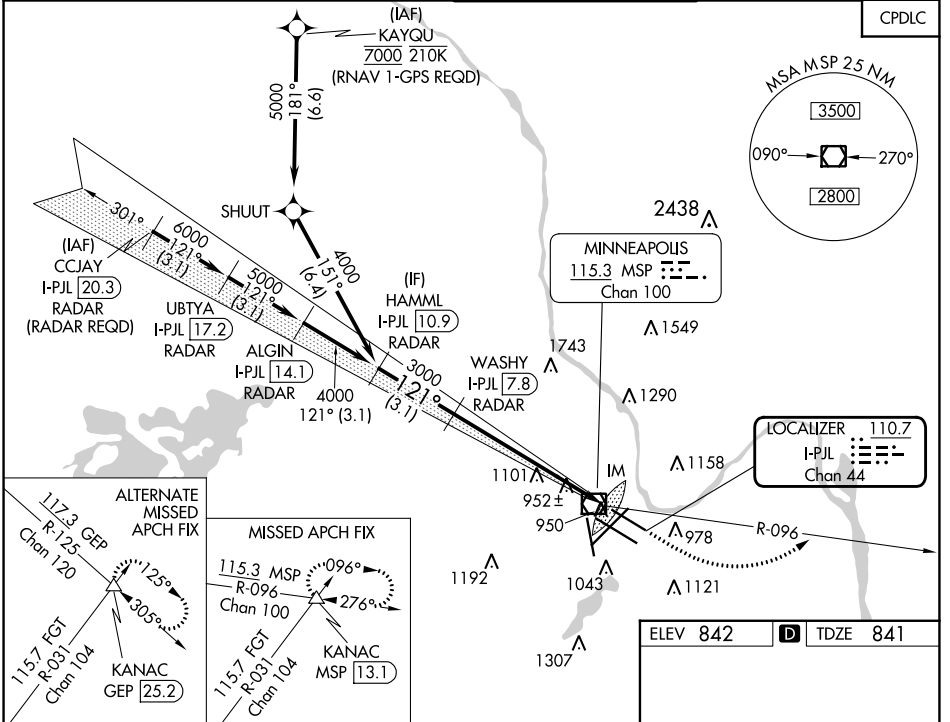


LOC/DME I-PJL <b>110.7</b> Chan <b>44</b>	APP CRS <b>121°</b>	Rwy Idg TDZE <b>7620</b> <b>841</b>	Apt Elev <b>842</b>
---	------------------------	---	------------------------

# ILS RWY 12L (SA CAT I)

## MINNEAPOLIS-ST PAUL INTL/WOLD-CHAMBERLAIN (MSP)

<b>⚠</b> Simultaneous approach authorized with Rwy 12R. Requires specific OPSPEC, MSPEC, or LOA approval and use of HUD to DH. DME or RADAR required.	<b>⚠</b> MISSED APPROACH: Climb to 1300, then climbing left turn to 3000 on MSP VOR/DME R-096 to KANAC INT/MSP 13.1 DME and hold.			
		D-ATIS ARR <b>135.35 239.275</b> DEP <b>120.8</b>	MINNEAPOLIS APP CON <b>118.725 335.65</b> (Rwy 35) <b>119.3 335.65</b> (12L-30R, 4-22, 17) <b>126.95 335.65</b> (12R-30L)	MINNEAPOLIS TOWER <b>123.675 273.55</b> (17-35) <b>123.95 273.55</b> (12L-30R) <b>126.7 273.55</b> (12R-30L, 4-22)



CATEGORY	A	B	C	D
S-ILS 12L	RA 147/14 150 DA 991			

