

(RST1 .RST) 23334

ROCHESTER ONE DEPARTURE

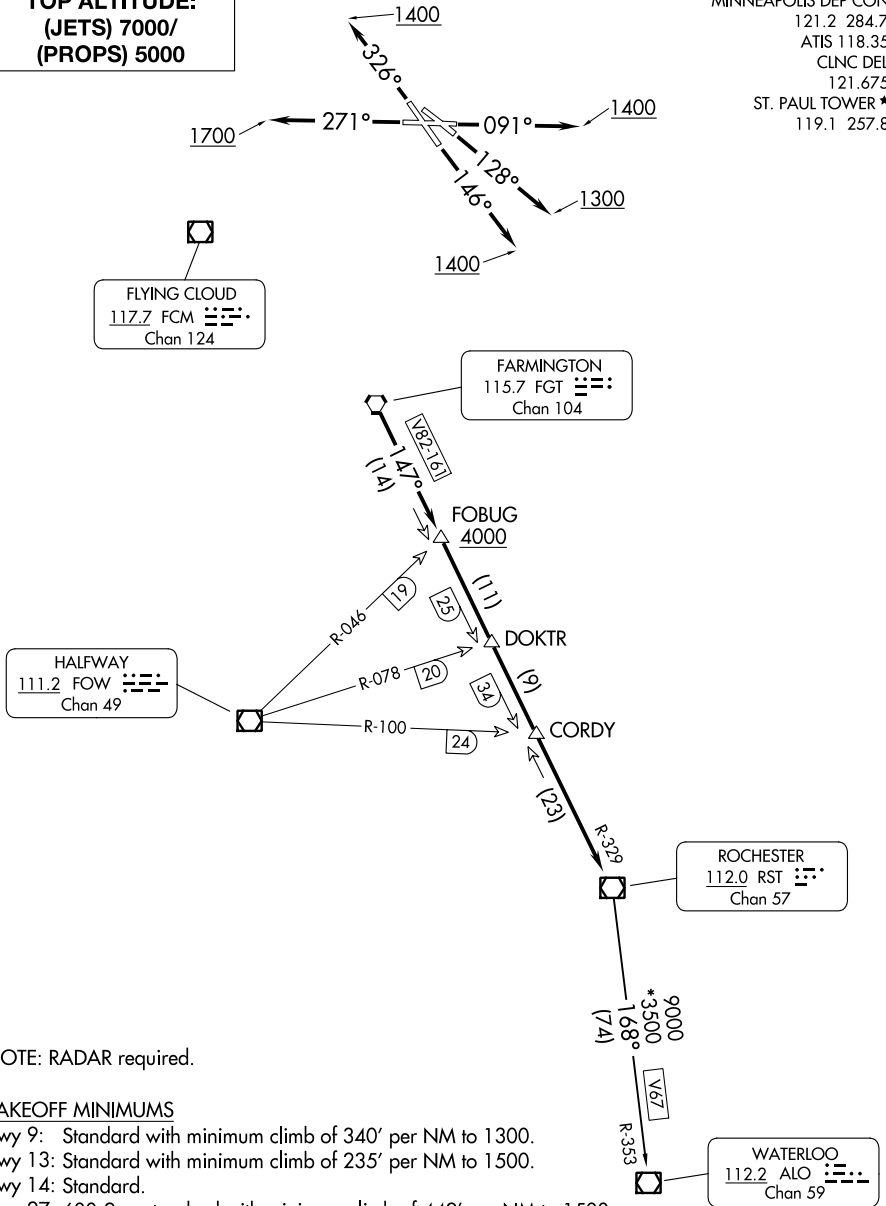
AL-263 (FAA)

ST PAUL DOWNTOWN HOLMAN FLD (STP)

ST. PAUL, MINNESOTA

**TOP ALTITUDE:
(JETS) 7000/
(PROPS) 5000**

MINNEAPOLIS DEP CON
121.2 284.7
ATIS 118.35
CLNC DEL
121.675
ST. PAUL TOWER *
119.1 257.8



NOTE: RADAR required.

TAKEOFF MINIMUMS

- Rwy 9: Standard with minimum climb of 340' per NM to 1300.
- Rwy 13: Standard with minimum climb of 235' per NM to 1500.
- Rwy 14: Standard.
- Rwy 27: 600-2 or standard with minimum climb of 442' per NM to 1500.
- Rwy 31: NA - Obstacles.
- Rwy 32: Standard with minimum climb of 340' per NM to 3000.

(CONTINUED ON FOLLOWING PAGE)

NOTE: Chart not to scale.

ROCHESTER ONE DEPARTURE

(RST1 .RST) 13SEP18

ST. PAUL, MINNESOTA

ST PAUL DOWNTOWN HOLMAN FLD (STP)

NC-1, 03 OCT 2024 to 31 OCT 2024

NC-1, 03 OCT 2024 to 31 OCT 2024