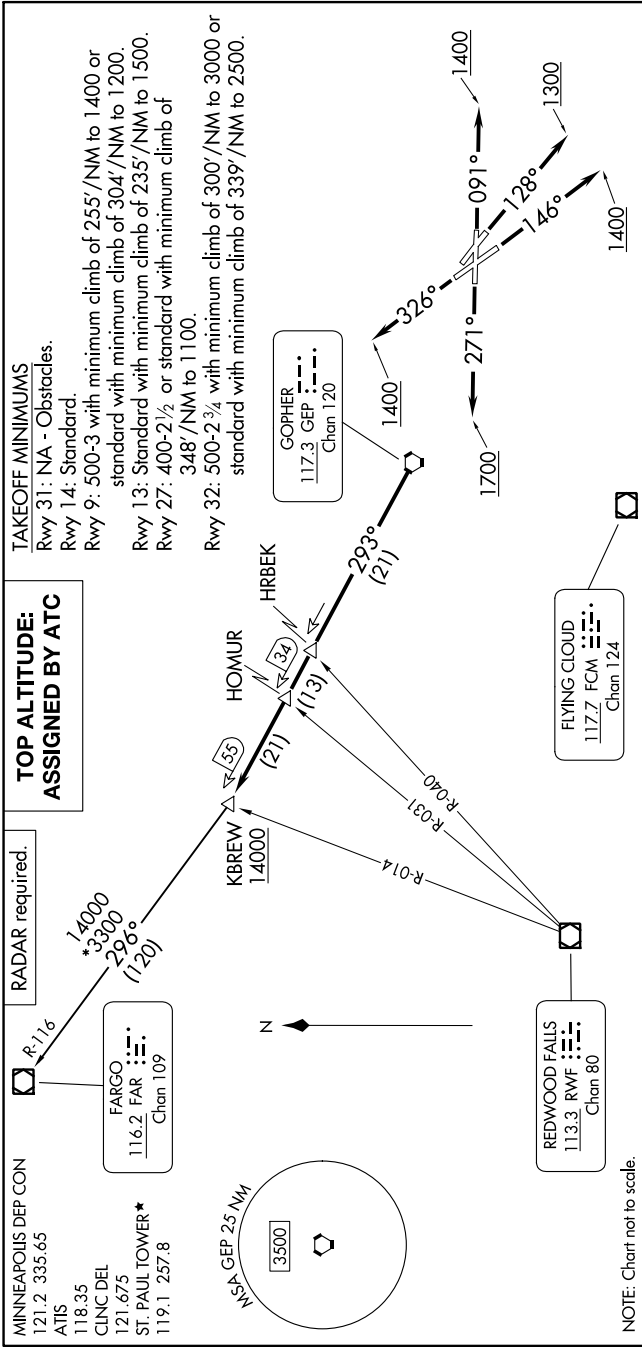


NC-1, 03 OCT 2024 to 31 OCT 2024



TOP ALTITUDE: ASSIGNED BY ATC

RADAR required.
R-116

MINNEAPOLIS DEP CON
121.2 335.65
ATIS
118.35
CLNC DEL
121.675
ST. PAUL TOWER*
119.1 257.8

FARGO
116.2 FAR
Chan 109

NSA GEP 25 NM
3500

N

TAKEOFF MINIMUMS

- Rwy 31: NA - Obstacles.
- Rwy 14: Standard.
- Rwy 9: 500-3 with minimum climb of 255'/NM to 1400 or standard with minimum climb of 304'/NM to 1200.
- Rwy 13: Standard with minimum climb of 235'/NM to 1500.
- Rwy 27: 400-2½ or standard with minimum climb of 348'/NM to 1100.
- Rwy 32: 500-2¾ with minimum climb of 300'/NM to 3000 or standard with minimum climb of 339'/NM to 2500.

GOPHER
117.3 GEP
Chan 120

FLYING CLOUD
117.7 FCM
Chan 124

REDWOOD FALLS
113.3 RW
Chan 80

NOTE: Chart not to scale.

DEPARTURE ROUTE DESCRIPTION

- TAKEOFF RUNWAY 9: Climb on heading 091° to 1400 for RADAR vectors to GEP VORTAC then on depicted route to KBREW, thence. . . .
- TAKEOFF RUNWAY 13: Climb on heading 128° to 1300 for RADAR vectors to GEP VORTAC then on depicted route to KBREW, thence. . . .
- TAKEOFF RUNWAY 14: Climb on heading 146° to 1400 for RADAR vectors to GEP VORTAC then on depicted route to KBREW, thence. . . .
- TAKEOFF RUNWAY 27: Climb on heading 271° to 1700 for RADAR vectors to GEP VORTAC then on depicted route to KBREW, thence. . . .
- TAKEOFF RUNWAY 32: Climb on heading 326° to 1400 for RADAR vectors to GEP VORTAC then on depicted route to KBREW, thence. . . .
- . . . on transition. Maintain ATC assigned altitude. Expect filed altitude 10 minutes after departure.
- FARGO TRANSITION (KBREW2.FAR): From over KBREW on FAR R-116 to FAR VOR/DME.

NC-1, 03 OCT 2024 to 31 OCT 2024