

LOC/DME I-BAO 111.5 Chan 52	APP CRS 326°	Rwy Idg TDZE Apt Elev	6109 704 705
--	------------------------	-----------------------------	---

ILS or LOC RWY 32

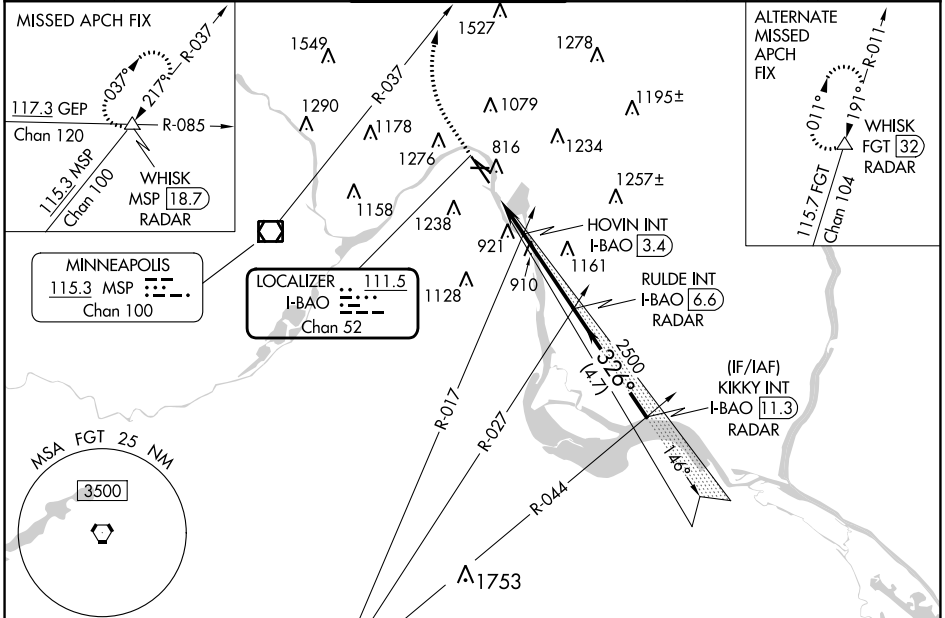
ST PAUL DOWNTOWN HOLMAN FLD (STP)

DME or RADAR required. RADAR required for procedure entry.

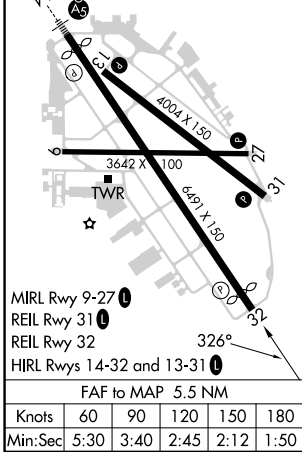
MISSED APPROACH: Climb to 1300 then climbing right turn to 4000 on heading 010° and MSP R-037 to WHISK INT/MSP 18.7 DME/RADAR and hold.

⚠ Rwy 32 helicopter visibility reduction below RVR 4000 NA. Inop table does not apply to S-ILS 32 all Cats and S-LOC all Cats. HOVIN fix minimums: Inop table does not apply to Cats A/B. For inop ALS, increase Cats C/D visibility to 1 ½ SM.
❄ -30°C

ATIS 118.35	MINNEAPOLIS APP CON 121.2 335.65	ST. PAUL TOWER * 119.1 (CTAF) 0 257.8	GND CON 121.675	CLNC DEL 121.675	UNICOM 122.95
-----------------------	--	---	---------------------------	----------------------------	-------------------------



ELEV 705	D	TDZE 704
----------	----------	----------



1300	4000	MSP R-037	WHISK	RULDE INT I-BAO 6.6 RADAR	KIKKY INT I-BAO 11.3 RADAR
*LOC only		I-BAO 1.1	*I-BAO 2.6	HOVIN INT I-BAO 3.4	2500
		1460*		326°	2500
		1460		2500	GS 3.00° TCH 40
		-1.5 NM		-0.8 NM	-3.2 NM
		-4.7 NM			
CATEGORY	A		B	C	D
S-ILS 32	1011/50		307 (400-1)		
S-LOC 32	1460/55 756 (800-1)	1460/60 756 (800-1¼)	1460-2		756 (800-2)
C CIRCLING	1580-1¼	875 (900-1¼)	1580-2½ 875 (900-2½)	1580-2¾ 875 (900-2¾)	
HOVIN FIX MINIMUMS					
S-LOC 32	1220/55	516 (600-1)	1220-1¼	516 (600-1¼)	
C CIRCLING	1580-1¼	875 (900-1¼)	1580-2½ 875 (900-2½)	1580-2¾ 875 (900-2¾)	

NC-1, 03 OCT 2024 to 31 OCT 2024

NC-1, 03 OCT 2024 to 31 OCT 2024