

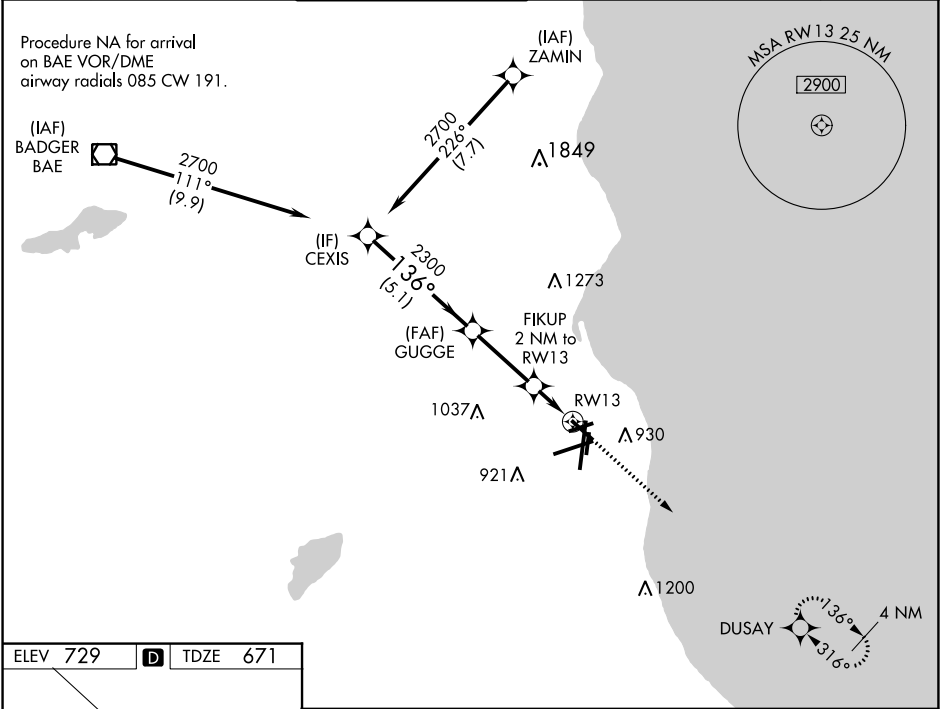
WAAS CH <b>99342</b> <b>W13A</b>	APP CRS <b>136°</b>	Rwy Idg TDZE Apt Elev	<b>4797</b> <b>671</b> <b>729</b>
--	------------------------	-----------------------------	---

# RNAV (GPS) RWY 13

GENERAL MITCHELL INTL (MKE)

RNP APCH.		MISSED APPROACH: Climb to 2900 direct DUSAY and hold.	
▼ Rwy 13 helicopter visibility reduction below 3/4 SM NA. For uncompensated Baro-VNAV systems, LNAV/VNAV NA below -19°C or above 54°C.			

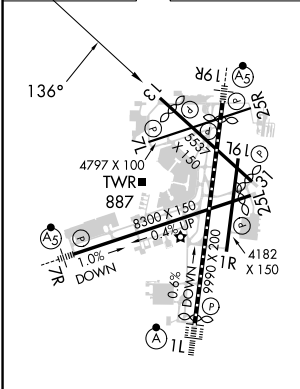
D-ATIS <b>126.4</b>	MILWAUKEE APP CON <b>126.5 307.0</b>	MILWAUKEE TOWER <b>124.575 269.05</b>	GND CON <b>121.8 263.125</b>	CLNC DEL <b>120.8</b>	CPDLC
------------------------	---	--	---------------------------------	--------------------------	-------



EC-3, 03 OCT 2024 to 31 OCT 2024

EC-3, 03 OCT 2024 to 31 OCT 2024

ELEV <b>729</b>	<b>D</b>	TDZE <b>671</b>
-----------------	----------	-----------------



TDZ/CL Rwy 1L  
REIL Rws 1R, 7L,  
13, 25L, 25R, and 31  
HIRL Rws 1L-19R and 7R-25L  
MIRL Rws 1R-19L, 13-31, and 7L-25R

CEXIS	GUGGE	FIKUP 2 NM to RWY13	DUSAY
2700	2300	2300	2900
*LNAV only.			
GP 3.00° TCH 54		*1.360	
136°		136°	
5.1 NM		3 NM	0.7 NM
CATEGORY		A	B
LPV DA		971-1 300 (300-1)	
LNAV/VNAV DA		1189-1 518 (500-1)	
LNAV MDA		1140-1 469 (500-1)	
CIRCLING		1240-1 511 (600-1)	
		1240-1 511 (600-1/2)	
		1360-2 631 (700-2)	