

LOC/DME I-PXY 111.5 Chan 52	APP CRS 256°	Rwy ldg 7867 TDZE 683 Apt Elev 729
---	------------------------	---

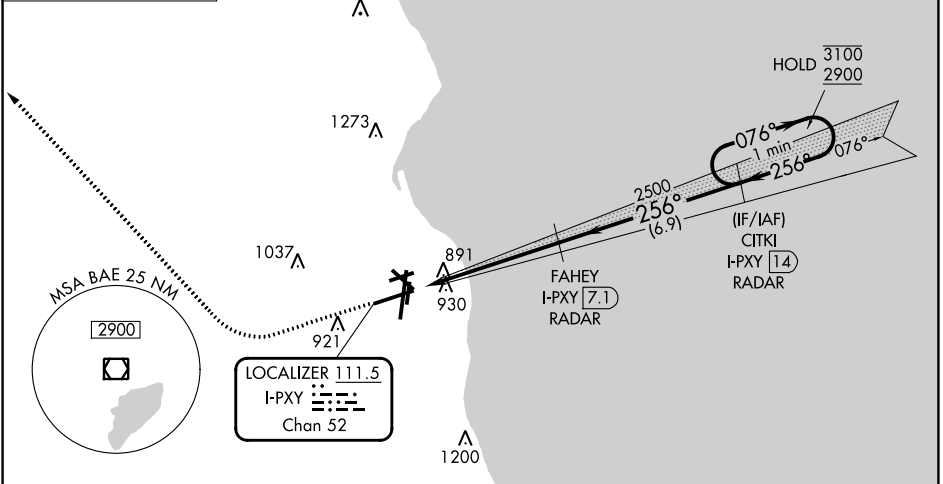
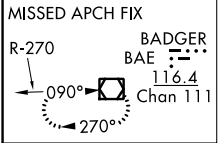
LOC RWY 25L

GENERAL MITCHELL INTL (MKE)

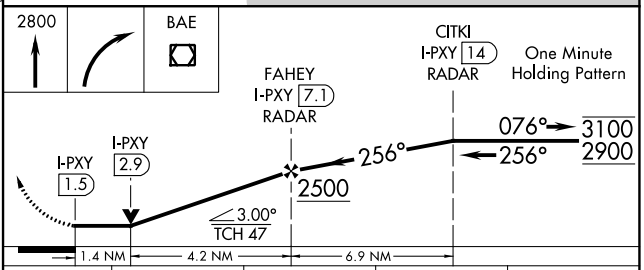
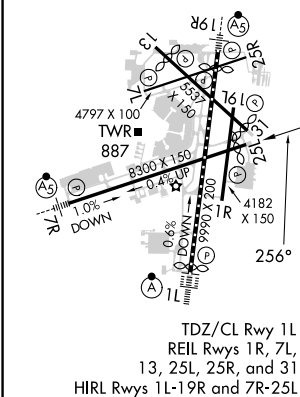
RADAR required for procedure entry. DME or RADAR required.
 ▼ Rwy 25L helicopter visibility reduction below 3/4 SM NA.

MISSED APPROACH: Climb to 2800 then right turn direct BAE VOR/DME and hold.

D-ATIS 126.4	MILWAUKEE APP CON 126.5 307.0	MILWAUKEE TOWER 124.575 269.05	GND CON 121.8 263.125	CLNC DEL 120.8	CPDLC
------------------------	---	--	---------------------------------	--------------------------	-------



ELEV 729	D	TDZE 683
-----------------	----------	-----------------



	CATEGORY	A	B	C	D
S-LOC 25L		1160-1	477 (500-1)	1160-1 ³ / ₈	477 (500-1 ³ / ₈)
<input checked="" type="checkbox"/> CIRCLING		1240-1	511 (600-1)	1240-1 ¹ / ₂	1360-2 631 (700-2)

MILWAUKEE, WISCONSIN
Amdt 6A 03JAN19

42°57'N-87°54'W

GENERAL MITCHELL INTL (MKE) LOC RWY 25L

EC-3, 03 OCT 2024 to 31 OCT 2024

EC-3, 03 OCT 2024 to 31 OCT 2024