

VOR/DME MLT	APP CRS	Rwy Idg	<b>4713</b>
<b>117.9</b>	<b>319°</b>	TDZE	<b>408</b>
Chan <b>126</b>		Apt Elev	<b>408</b>

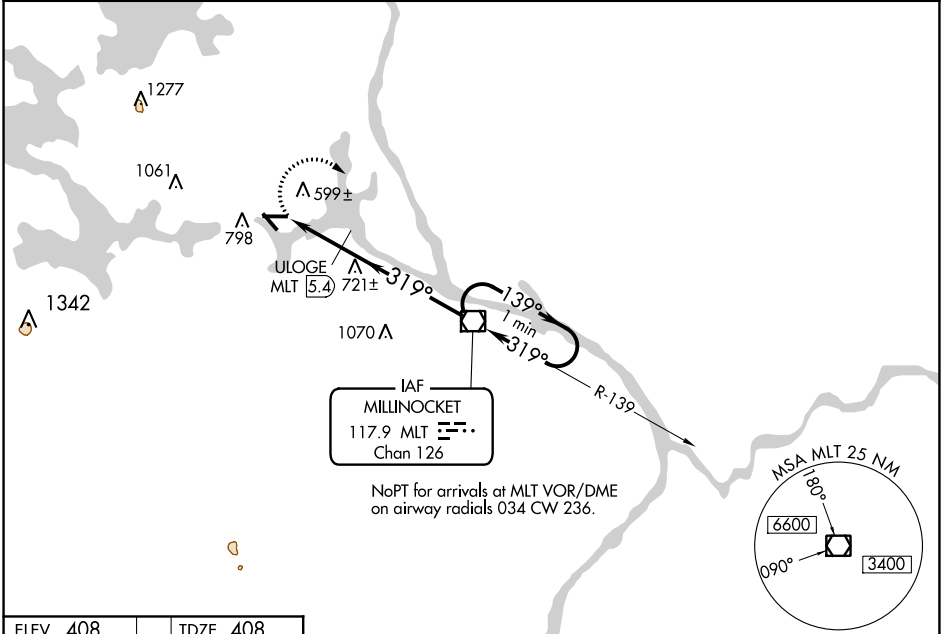
# VOR RWY 29

MILLINOCKET MUNI (MLT)

**⚠** Helicopter visibility reduction below 1 SM NA. When local altimeter setting not received, use Houlton altimeter setting and increase all MDA 120 feet, increase S-29 and Circling Cat A/B visibility ¼ SM, Cat C visibility ½ SM; increase S-29 Cat D visibility ½ SM; ULOGE fix minimums: increase S-29 Cat C/D and Circling Cat A/B visibility ¼ SM, and Circling Cat C visibility ½ SM. Procedure NA at night.

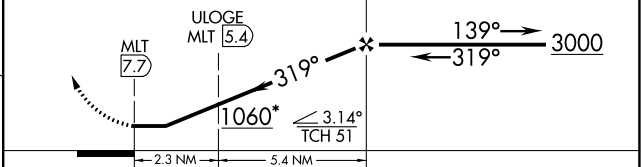
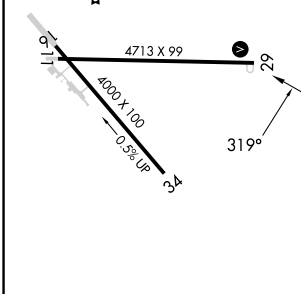
**MISSED APPROACH:** Climbing right turn to 3000 direct MLT VOR/DME and hold, continue climb-in-hold to 3000.

ASOS <b>135.225</b>	BOSTON CENTER <b>120.25 346.4</b>	UNICOM <b>122.8 (CTAF)</b> <b>📶</b>
------------------------	--------------------------------------	--



ELEV <b>408</b>	TDZE <b>408</b>
-----------------	-----------------

3000 MLT **📶** \*1180 When using Houlton altimeter setting. One Minute Holding Pattern



CATEGORY	A	B	C	D
S-29	1060-1 652 (700-1)		1060-1¾ 652 (700-1¾)	1060-2 652 (700-2)
CIRCLING	1100-1 692 (700-1)		1100-2 692 (700-2)	1380-3 972 (1000-3)
ULOGE FIX MINIMUMS				
S-29	880-1 472 (500-1)		880-1¼ 472 (500-1¼)	880-1½ 472 (500-1½)
CIRCLING	1100-1 692 (700-1)		1100-2 692 (700-2)	1380-3 972 (1000-3)

REIL Rwy 29 **📶**  
MIRL Rwy 11-29 **📶**

FAF to MAP 7.7 NM

Knots	60	90	120	150	180
Min:Sec	7:42	5:08	3:51	3:05	2:34

NE-1, 03 OCT 2024 to 31 OCT 2024

NE-1, 03 OCT 2024 to 31 OCT 2024