

WAAS CH 61329 W16A	APP CRS 166°	Rwy Idg TDZE Apt Elev	9501 2872 2872
----------------------------------------	------------------------	-----------------------------	-------------------------------------------

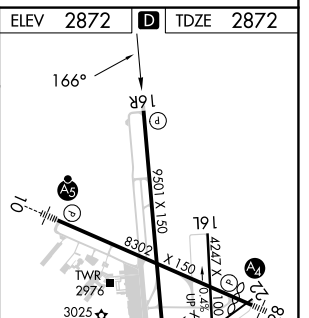
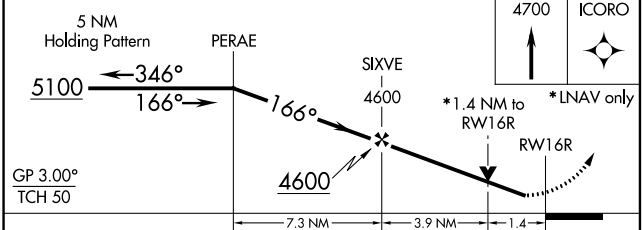
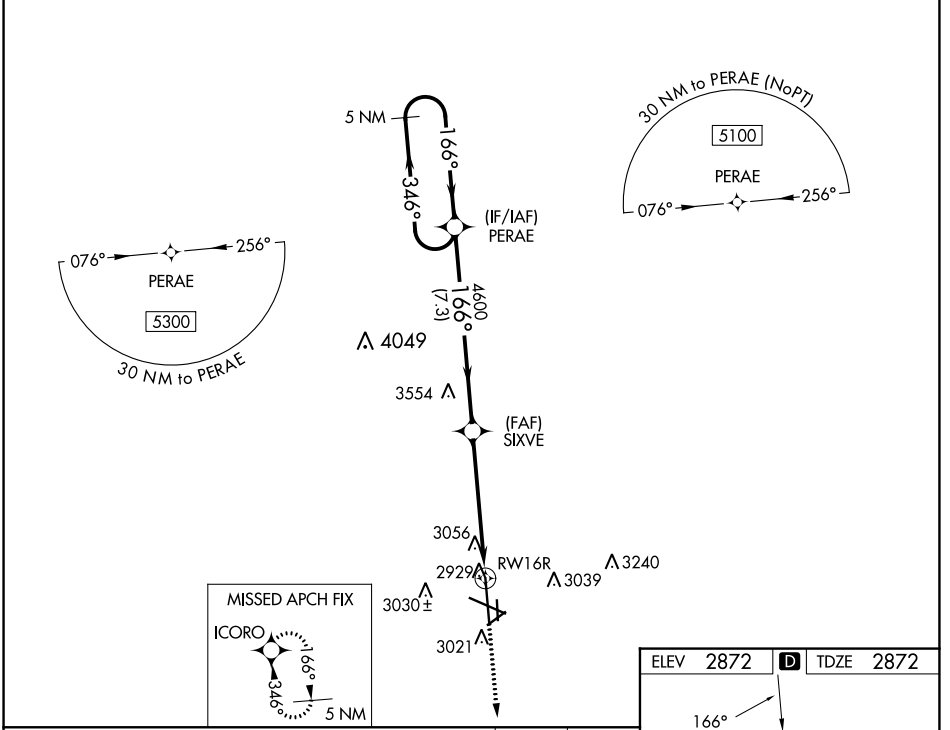
RNAV (GPS) RWY 16R

MIDLAND INTL AIR AND SPACE PORT (M.A.F.)

⚠ For uncompensated Baro-VNAV systems, LNAV/VNAV NA below -11°C (13°F) or above 25°C (77°F). Rwy 16R helicopter visibility reduction below ¾ SM NA. DME/DME RNP-0.3 NA. Circling Rwy 16L NA at night.

MISSED APPROACH: Climb to 4700 direct ICORO and hold.

ATIS 126.8 235.975	MIDLAND APP CON* 124.6 290.4	MIDLAND TOWER* 118.7 (CTAF) 0273.45	GND CON 121.9 348.6	CLNC DEL 118.05 317.65	UNICOM 122.95
------------------------------	----------------------------------------	-----------------------------------------------	-------------------------------	----------------------------------	-------------------------



CATEGORY	A	B	C	D
LPV DA		3072-¾	200 (200-¾)	
LNAV/VNAV DA		3398-1¾	526 (600-1¾)	
LNAV MDA	3360-1	488 (500-1)	3360-1¾	488 (500-1¾)
CIRCLING	3440-1	568 (600-1)	3440-1½	3520-2
			568 (600-1½)	648 (700-2)

REIL Rwy 34L
MIRL Rws 4-22 and 16L-34R
HIRL Rws 10-28 and 16R-34L

SC-3, 31 OCT 2024 to 28 NOV 2024

SC-3, 31 OCT 2024 to 28 NOV 2024