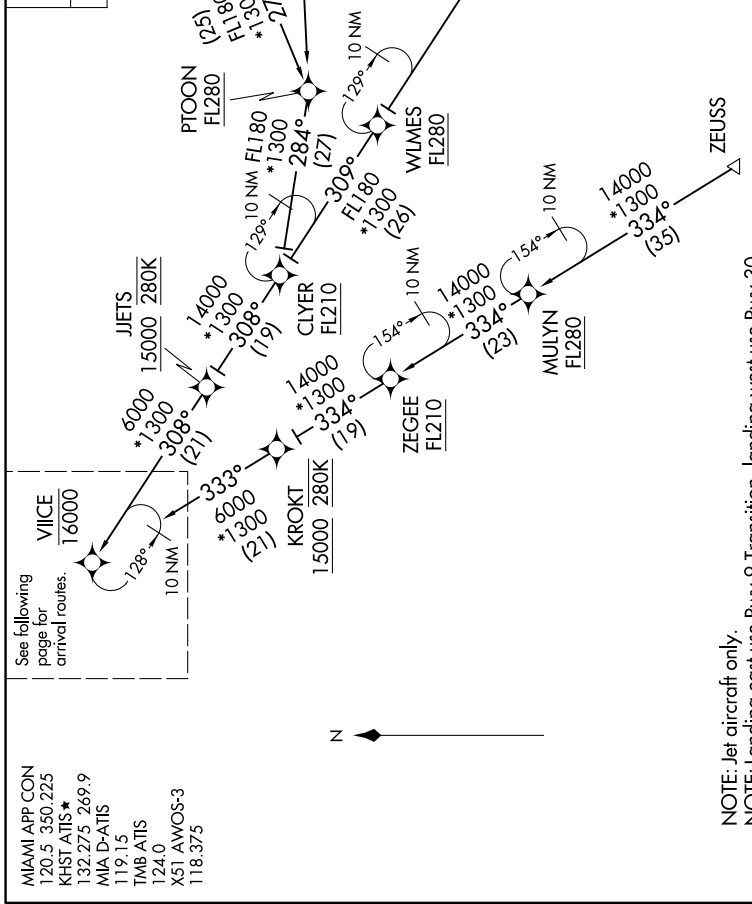


# VIICE TWO ARRIVAL (RNAV) Transition Routes

MIAMI, FLORIDA

SE-3, 31 OCT 2024 to 28 NOV 2024

RNAV 1 - DME/DME/IRU or GPS.  
 ZEUSS, MADIZ, ZQA, NICKO TRANSITION: GPS  
 RADAR required.



MADIZ TRANSITION (MADIZ.VIICE2)  
 NASSAU TRANSITION (ZQA.VIICE2)  
 NICKO TRANSITION (NICKO.VIICE2)  
 PTOON TRANSITION (PTOON.VIICE2)  
 ZEEGE TRANSITION (ZEGEE.VIICE2)  
 ZEUSS TRANSITION (ZEUSS.VIICE2)

See following page for arrival routes.

MIAMI APP CON  
 120.5 350.225  
 KHST ATIS \*  
 132.275 269.9  
 MIA D-ATIS  
 119.15  
 TMB ATIS  
 124.0  
 X51 AMOS-3  
 118.375

NOTE: Jet aircraft only.  
 NOTE: Landing east use Rwy 9 Transition, landing west use Rwy 30 Transition. Expect Rwy assignment from MIA approach prior to VIICE.  
 NOTE: Do not file PTOON or ZEGEE Transition - to be assigned by ATC.

(CONTINUED ON FOLLOWING PAGE)

NOTE: Chart not to scale.

SE-3, 31 OCT 2024 to 28 NOV 2024

# VIICE TWO ARRIVAL (RNAV) Transition Routes

MIAMI, FLORIDA