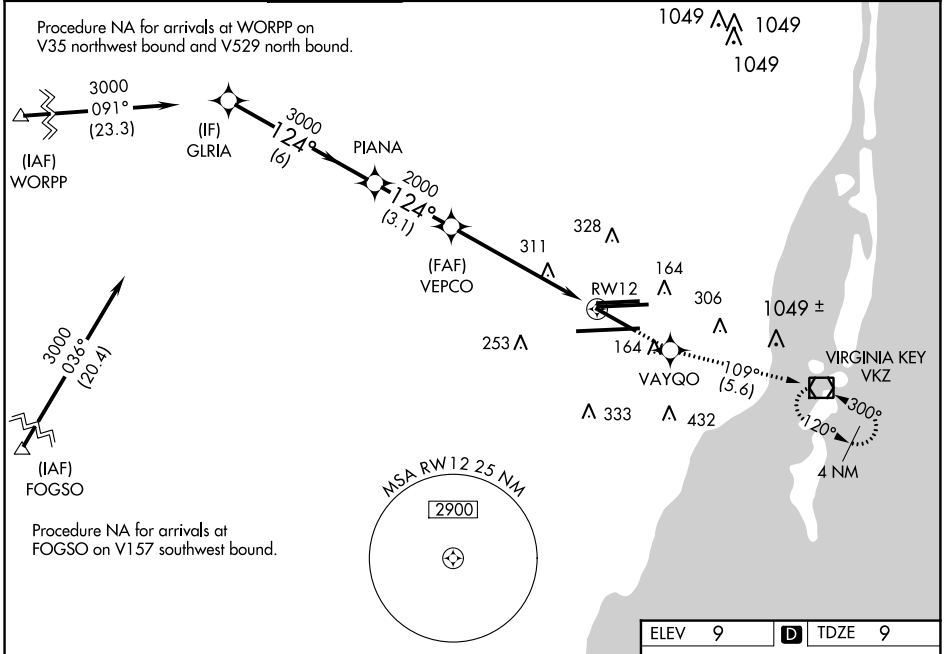


WAAS CH <b>61204</b> <b>W12A</b>	APP CRS <b>124°</b>	Rwy Idg TDZE <b>9</b> Apt Elev <b>9</b>	<b>8579</b>
--	------------------------	---	-------------

# RNAV (GPS) Z RWY 12

MIAMI INTL (MIA)

RNP APCH - GPS.		MALSR		MISSED APPROACH: Climb to 3000 direct VAYGO and on 109° track to VKZ VOR/DME and hold, continue climb-in-hold to 3000.		
<p>▼ Rwy 12 helicopter visibility reduction below ¾ SM NA. For uncompensated Baro-VNAV systems, LNAV/VNAV NA below 9°C or above 54°C. For inop ALS, increase LPV all Cats visibility to RVR 6000, LNAV/VNAV all Cats to 1½ and LNAV Cat A/B to 5500.</p>						
D-ATIS ARR <b>119.15</b> DEP <b>133.675</b>	MIAMI APP CON <b>124.85 322.3</b>	MIAMI TOWER <b>118.3 256.9</b>	GND CON <b>121.8 (8L/8R/12/26L/26R)</b> <b>127.5 (9/27/30)</b>	<b>348.6</b>	CLNC DEL <b>135.35</b>	CPDLC



SE-3, 03 OCT 2024 to 31 OCT 2024

SE-3, 03 OCT 2024 to 31 OCT 2024

VGS and RNAV glidepath not coincident (VGS Angle 3.00/TCH 72).		3000	VAYGO	tr 109°	VKZ
<p>GLRIA PIANA VEPCO</p> <p>3000 124° 3000 2000</p> <p>GP 3.00° TCH 56</p> <p>1.6 NM to RWY 12</p>					
	6 NM	3.1 NM	4.4 NM	1.6 NM	
CATEGORY	A	B	C	D	
LPV DA		391/40	382 (400-¾)		
LNAV/VNAV DA		512/55	503 (600-1)		
LNAV MDA	600/40	591 (600-¾)	600-1¼	591 (600-1¼)	

TDZ/CL Rwy 8R  
REIL Rwys 8L and 26R  
HIRL all Rwys