

APP CRS	Rwy Idg	10506
092°	TDZE	8
	Apt Elev	9

RNAV (RNP) Y RWY 8R

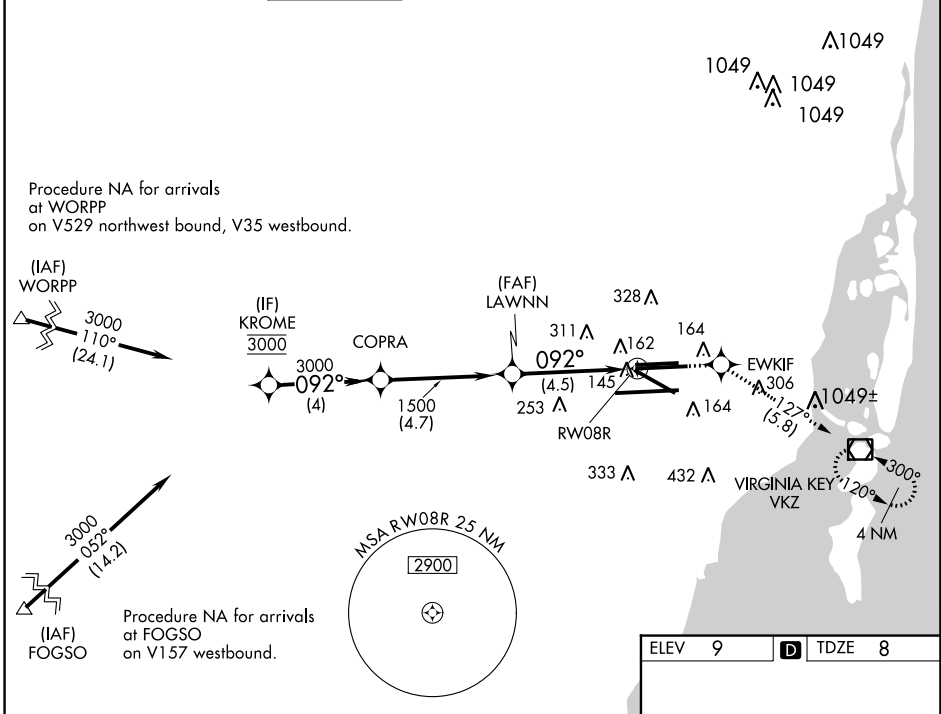
MIAMI INTL (MIA)

⚠ For uncompensated Baro-VNAV systems, procedure NA below 6°C (43°F) or above 54°C (130°F). GPS required. For inop MALSR, increase RNP 0.11 all Cats visibility to 1¼ mile.
 *Missed approach requires minimum climb of 330 feet per NM to 600.



MISSED APPROACH: Climb to 3000 direct EWKIF and on track 127° to VKZ VOR/DME and hold, continue climb-in-hold to 3000.

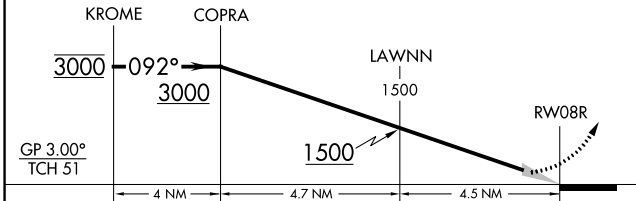
D-ATIS	MIAMI APP CON	MIAMI TOWER	GND CON	CLNC DEL	CPDLC
ARR 119.15	124.85 322.3	118.3 256.9	121.8 (8L/8R/12/26L/26R)	135.35	
DEP 133.675			127.5 (9/27/30)	348.6	



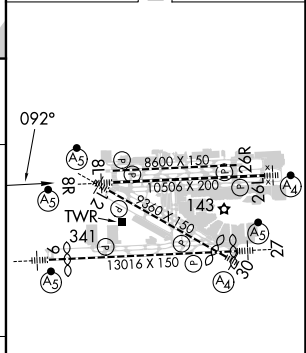
SE-3, 31 OCT 2024 to 28 NOV 2024

SE-3, 31 OCT 2024 to 28 NOV 2024

VGSI and RNAV glidepath not coincident (VGSI Angle 3.00/TCH 77).



ELEV	9	TDZE	8
------	---	------	---



CATEGORY	A	B	C	D
*RNP 0.11 DA	397/45 389 (400-7%)			
RNP 0.30 DA	458/50 450 (500-1)			

AUTHORIZATION REQUIRED

TDZ/CL Rwy 8R
 REIL Rwy 8L and 26R
 HIRL all Rwy 8