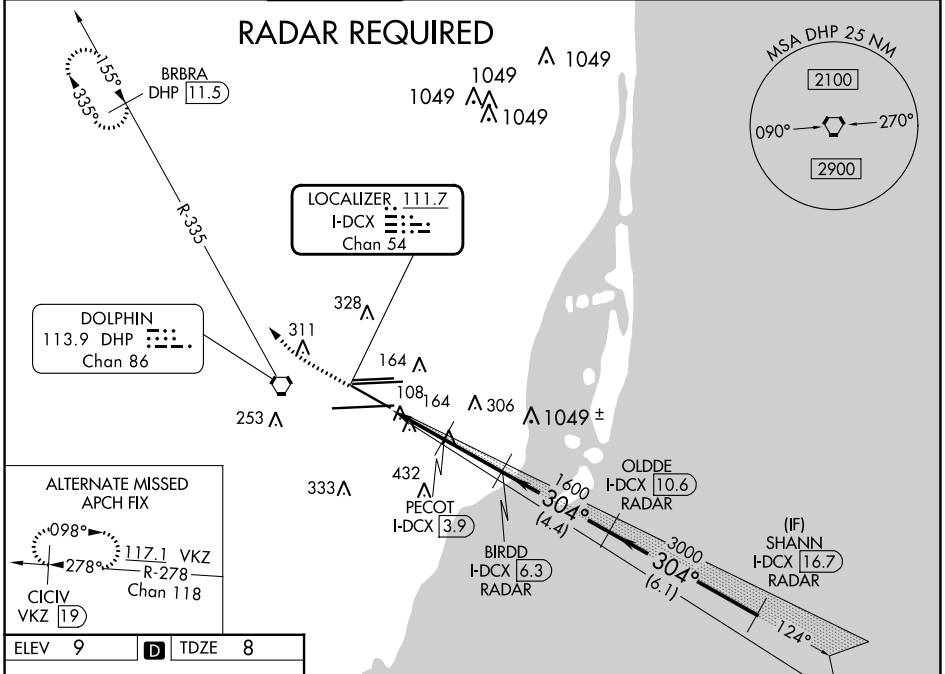


LOC/DME I-DCX 111.7 Chan 54	APP CRS 304°	Rwy Idg TDZE Apt Elev	7913 8 9
-------------------------------------------------	------------------------	-----------------------------	-------------------------------------

ILS or LOC RWY 30

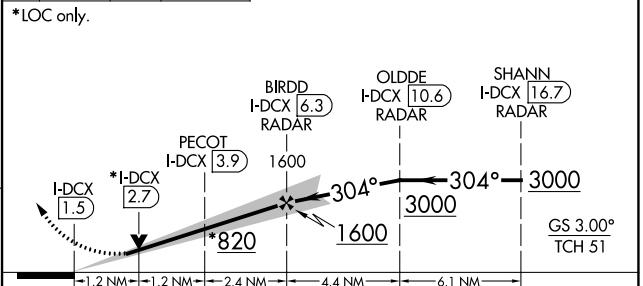
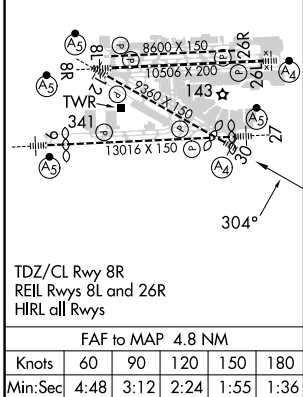
MIAMI INTL (MIA)

▼	DME required. Inop table does not apply.	MALS 	MISSED APPROACH: Climb to 800 then climbing right turn to 2000 on heading 310° and DHP VORTAC R-335 to BRBRA/11.5 DME and hold.		
D-ATIS ARR 119.15 DEP 133.675	MIAMI APP CON 124.85 322.3	MIAMI TOWER 118.3 256.9	GND CON 121.8 (8L/8R/12/26L/26R) 127.5 (9/27/30)	CLNC DEL 348.6	CPDLC



ELEV 9	D	TDZE 8
--------	----------	--------

800	2000	DHP R-335	BRBRA DHP 11.5	VGSI and ILS glidepath not coincident (VGSI Angle 3.00/TCH 71).
	hdg 310°			



CATEGORY	A	B	C	D
S-ILS 30	258/40 250 (300-¾)			
S-LOC 30	460/40	452 (500-¾)	460/60 452 (500-1¼)	460-1½ 452 (500-1½)

SE-3, 31 OCT 2024 to 28 NOV 2024

SE-3, 31 OCT 2024 to 28 NOV 2024