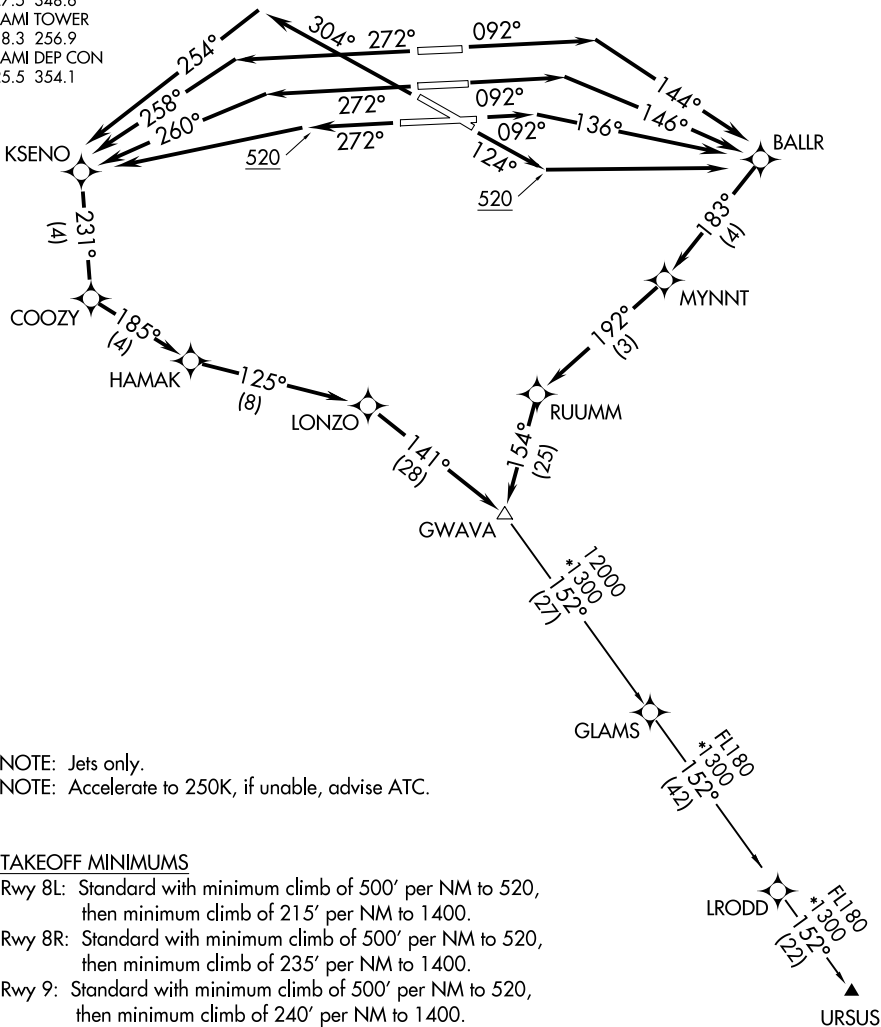


# GWAVA TWO DEPARTURE (RNAV)

D-ATIS  
 133.675  
 CLNC DEL  
 135.35  
 CPDLC  
 GND CON  
 (Rwys 8L/R, 12, 26L/R)  
 121.8 348.6  
 (Rwys 9, 27, 30)  
 127.5 348.6  
 MIAMI TOWER  
 118.3 256.9  
 MIAMI DEP CON  
 125.5 354.1

**TOP ALTITUDE:  
5000**

RNAV 1-DME/DME/IRU or GPS.  
 RADAR required.



NOTE: Jets only.  
 NOTE: Accelerate to 250K, if unable, advise ATC.

### TAKEOFF MINIMUMS

- Rwy 8L: Standard with minimum climb of 500' per NM to 520, then minimum climb of 215' per NM to 1400.
- Rwy 8R: Standard with minimum climb of 500' per NM to 520, then minimum climb of 235' per NM to 1400.
- Rwy 9: Standard with minimum climb of 500' per NM to 520, then minimum climb of 240' per NM to 1400.
- Rwy 12: Standard with minimum climb of 500' per NM to 520, then minimum climb of 230' per NM to 1400.
- Rwys 26L/R, 27, 30: Standard with minimum climb of 500' per NM to 520.

(NARRATIVE ON FOLLOWING PAGE)

NOTE: Chart not to scale.