

GLADZ THREE DEPARTURE(RNAV) Transition Routes

SE-3, 03 OCT 2024 to 31 OCT 2024

RNAV-1 DME/DME/IRU or GPS.
RADAR required.

TOP ALTITUDE:
5000

MIAMI DEP CON
119.45 290.325 (Departing East)
125.5 354.1 (Departing West)

D-ATIS
133.675

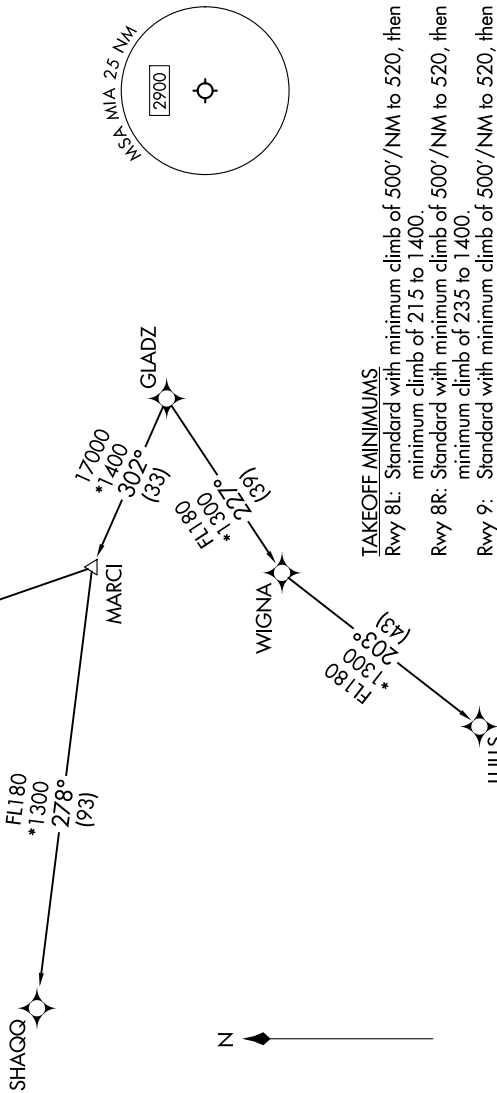
CUNC DEL
135.35

CPDLC

GND CON
(Rvys 8L/R, 12, 26L/R) 121.8 348.6
(Rvys 9, 27, 30) 127.5 348.6

MIAMI TOWER
118.3 256.9

NOTE: Jet aircraft only.
NOTE: Accelerate to 250K until leaving 10000, if unable, advise ATC.
NOTE: SHAGG and BAGGS transitions ATC assigned except aircraft departing MIA.



TAKEOFF MINIMUMS

Rwy 8L: Standard with minimum climb of 500'/NM to 520, then minimum climb of 215 to 1400.

Rwy 8R: Standard with minimum climb of 500'/NM to 520, then minimum climb of 235 to 1400.

Rwy 9: Standard with minimum climb of 500'/NM to 520, then minimum climb of 240 to 1400.

Rwy 12: Standard with minimum climb of 500'/NM to 520, then minimum climb of 230 to 1400.

Rvys 26L/R, 27, 30: Standard with minimum climb of 500'/NM to 520.

(CONTINUED ON FOLLOWING PAGE)

NOTE: Chart not to scale.

SE-3, 03 OCT 2024 to 31 OCT 2024