

# GLADZ THREE DEPARTURE (RNAV) Departure Routes

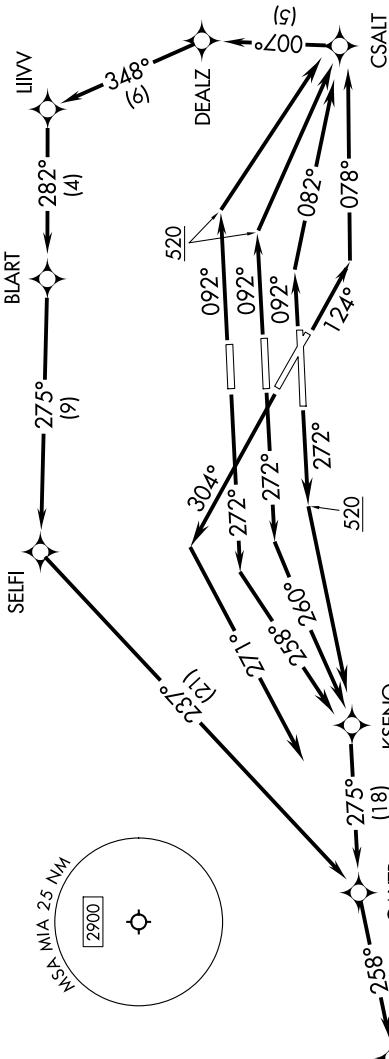
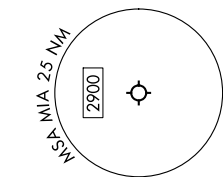
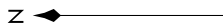
SE-3, 03 OCT 2024 to 31 OCT 2024

RNAV-1 DME/DME/IRU or GPS.  
RADAR required.

**TOP ALTITUDE:**  
**5000**

NOTE: Jet aircraft only.  
NOTE: Accelerate to 250K until leaving 10000, if unable, advise ATC.  
NOTE: SHAGG and BAGGS transitions ATC assigned except aircraft departing MIA.

MIAMI DEP CON  
125.5 354.1 (Departing West)  
119.45 290.325 (Departing East)  
D-ATIS  
133.675  
CUNC DEL  
135.35  
CPDIC  
GND CON  
(Rwys 8L/R, 12, 26L/R) 121.8 348.6  
(Rwys 9, 27, 30) 127.5 348.6  
MIAMI TOWER  
118.3 236.9



**TAKEOFF MINIMUMS**

Rwy 8L: Standard with minimum climb of 500'/NM to 520, then minimum climb of 215 to 1400.

Rwy 8R: Standard with minimum climb of 500'/NM to 520, then minimum climb of 235 to 1400.

Rwy 9: Standard with minimum climb of 500'/NM to 520, then minimum climb of 240 to 1400.

Rwy 12: Standard with minimum climb of 500'/NM to 520, then minimum climb of 230 to 1400.

Rwys 26L/R, 27, 30: Standard with minimum climb of 500'/NM to 520.

See following page for transition routes.  
GLADZ

(CONTINUED ON FOLLOWING PAGE)

NOTE: Chart not to scale.

SE-3, 03 OCT 2024 to 31 OCT 2024