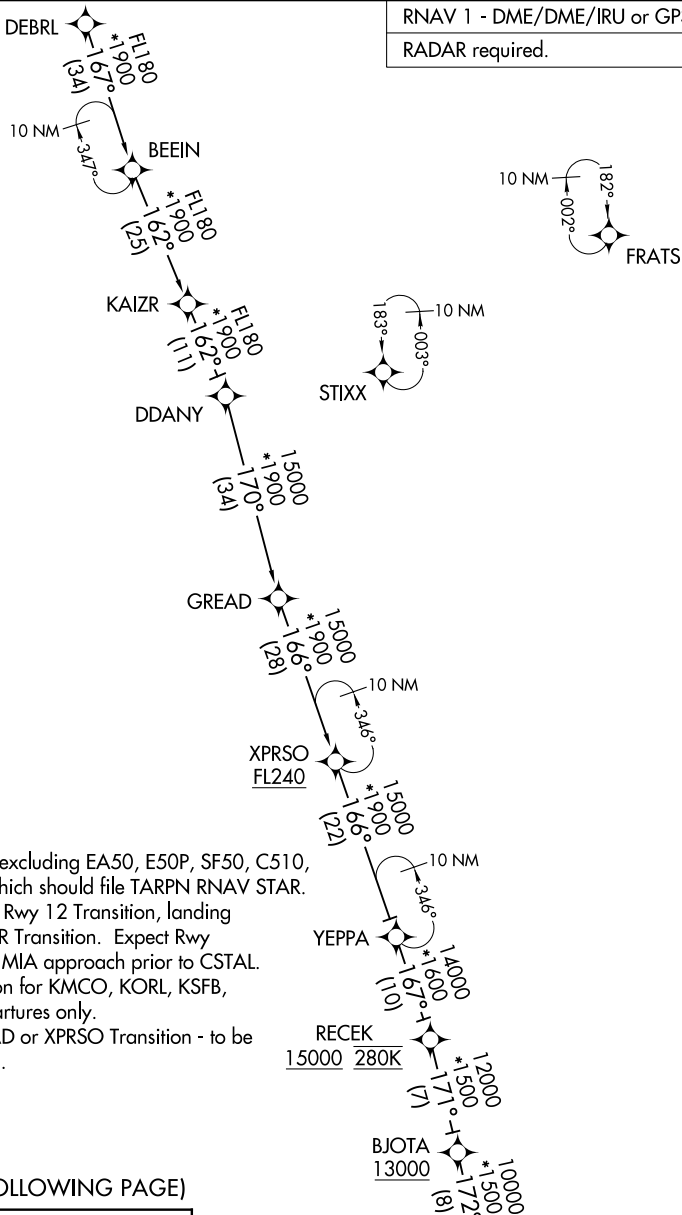


# CSTAL TWO ARRIVAL (RNAV) Transition Routes

MIAMI, FLORIDA

MIAMI APP CON  
 124.85 263.025  
 KHST ATIS\*  
 132.275 269.9  
 MIA D-ATIS  
 119.15  
 TMB ATIS  
 124.0  
 X51 AWOS-3  
 118.375

RNAV 1 - DME/DME/IRU or GPS.  
 RADAR required.



NOTE: Jet aircraft only, excluding EA50, E50P, SF50, C510, C525 aircraft, which should file TARPIN RNAV STAR.

NOTE: Landing east use Rwy 12 Transition, landing west use Rwy 26R Transition. Expect Rwy assignment from MIA approach prior to CSTAL.

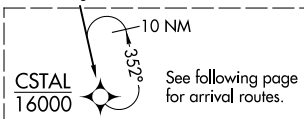
NOTE: DDANY Transition for KMCO, KORL, KSFB, KISM, KLEE departures only.

NOTE: Do not file GREAD or XPRSO Transition - to be assigned by ATC.

(CONTINUED ON FOLLOWING PAGE)

DDANY TRANSITION (DDANY.CSTAL2)  
 DEBRL TRANSITION (DEBRL.CSTAL2)  
 GREAD TRANSITION (GREAD.CSTAL2)  
 XPRSO TRANSITION (XPRSO.CSTAL2)

NOTE: Chart not to scale.



See following page for arrival routes.

SE-3, 03 OCT 2024 to 31 OCT 2024

SE-3, 03 OCT 2024 to 31 OCT 2024

# CSTAL TWO ARRIVAL (RNAV) Transition Routes

MIAMI, FLORIDA