


LOC I-OPF 110.5	APP CRS 093°	Rwy Idg 8002 TDZE 8 Apt Elev 8
---------------------------	------------------------	---

ILS or LOC RWY 9L

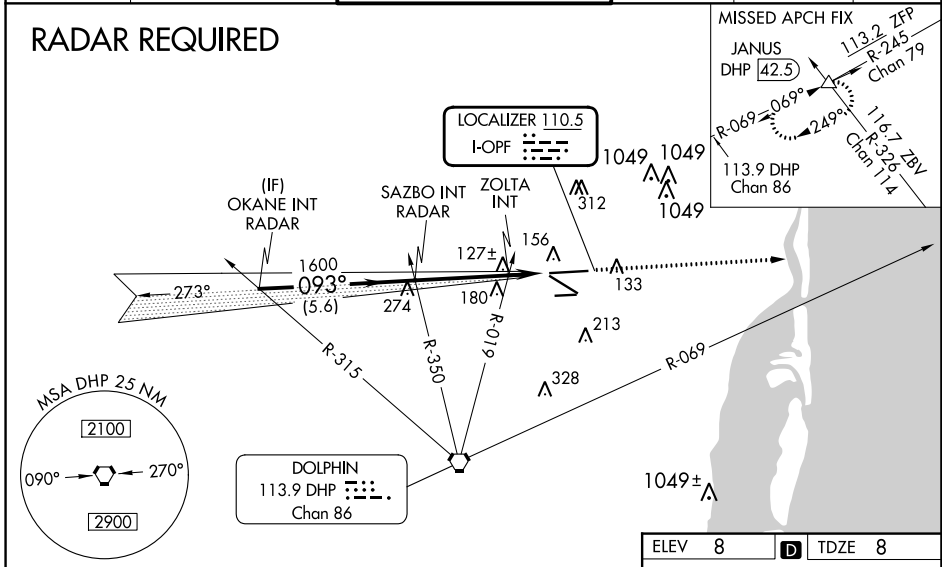
MIAMI-OPA LOCKA EXEC(OPF)

⚠ Inop table does not apply. Helicopter visibility reduction below 3/4 SM NA.
⚠ Caution: Lights on highway 0.7 NM north may be mistaken for runway.
 When local altimeter setting not received, use Miami Intl altimeter setting and increase all DA/MDA 20 feet and Circling Cat D visibility 1/4 SM. For inop MALSRL, increase S-LOC 9L Cats A and B visibility to 1 mile and Cats C and D visibility to 1 3/8 miles. ZOLTA Fix Minimums, for inop MALSRL, increase S-LOC 9L all Cats visibility to 1 mile. ZOLTA Fix Minimums, for inop MALSRL, when using Miami Intl altimeter setting, increase Cats A and B visibility to 1 mile and Cats C and D visibility to 1 1/8 miles. For inop MALSRL, when using Miami Intl altimeter setting, increase S-ILS 9L all Cats visibility to 7/8 mile.

MALSRL

 MISSED APPROACH: Climb to 2000 heading 093° and DHP VORTAC R-069 to JANUS INT/DHP 42.5 DME and hold.

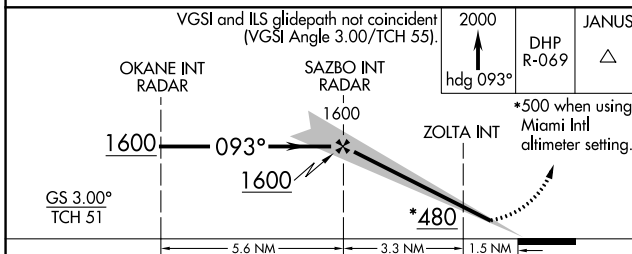
ATIS 125.9	MIAMI APP CON 128.6 306.975	OPA LOCKA TOWER ★ 134.675 (CTAF) 0	GND CON 120.025	CLNC DEL 119.2	GCO 119.45
----------------------	---------------------------------------	--	---------------------------	--------------------------	----------------------

RADAR REQUIRED

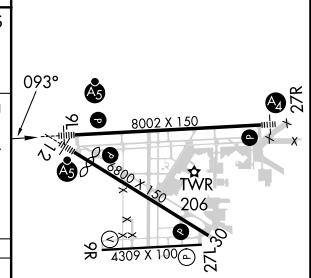


SE-3, 03 OCT 2024 to 31 OCT 2024

SE-3, 03 OCT 2024 to 31 OCT 2024



ELEV 8	D	TDZE 8
--------	---	--------



CATEGORY	A	B	C	D
S-ILS 9L		258-3/4	250 (300-3/4)	
S-LOC 9L	480-3/4	472 (500-3/4)	480-1	472 (500-1)
CIRCLING	540-1	532 (600-1)	620-1 3/4 612 (700-1 3/4)	740-2 1/4 732 (800-2 1/4)
ZOLTA FIX MINIMUMS				
S-LOC 9L		380-3/4	372 (400-3/4)	
CIRCLING	540-1	532 (600-1)	620-1 3/4 612 (700-1 3/4)	740-2 1/4 732 (800-2 1/4)

MIRL Rwy 9R-27L
 HIRL Rwy 9L-27R and 12-30

FAF to MAP 4.8 NM

Knots	60	90	120	150	180
Min:Sec	4:48	3:12	2:24	1:55	1:36