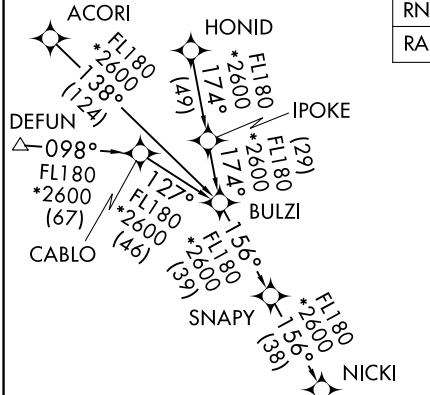


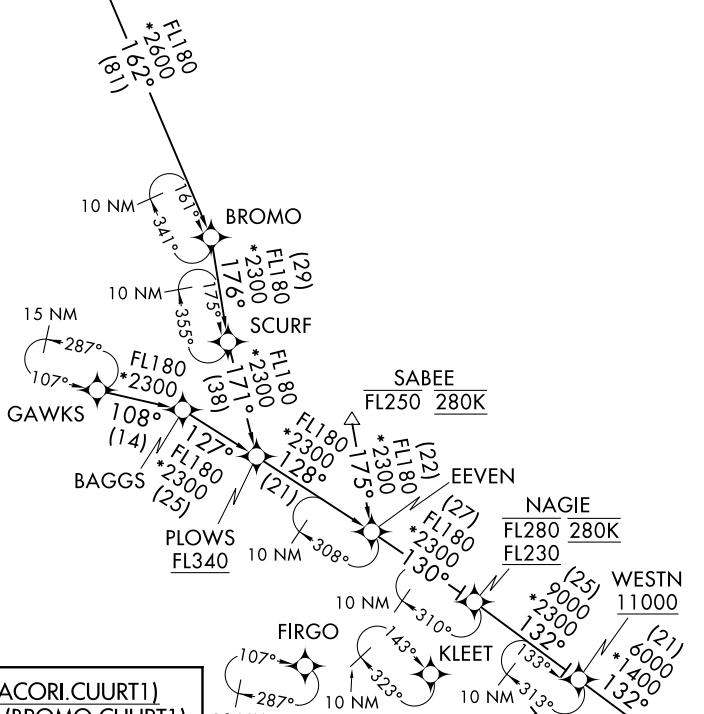
CUURT ONE ARRIVAL (RNAV) Transition Routes

RNAV 1 - DME/DME/IRU or GPS.
RADAR required.

MIAMI APP CON
120.5 350.225
ATIS
125.9



NOTE: Jet aircraft only.
NOTE: Do not file BROMO or SCURF Transition - to be assigned by ATC.
NOTE: SABEE Transition for traffic departing KTPA area only.



NOTE: Chart not to scale.

- ACORI TRANSITION (ACORI.CUURT1)
- BROMO TRANSITION (BROMO.CUURT1)
- DEFUN TRANSITION (DEFUN.CUURT1)
- GAWKS TRANSITION (GAWKS.CUURT1)
- HONID TRANSITION (HONID.CUURT1)
- MARCI TRANSITION (MARCI.CUURT1)
- SABEE TRANSITION (SABEE.CUURT1)
- SCURF TRANSITION (SCURF.CUURT1)

See following page for arrival routes.

CUURT ONE ARRIVAL (RNAV) Transition Routes

SE-3, 03 OCT 2024 to 31 OCT 2024

SE-3, 03 OCT 2024 to 31 OCT 2024