

(WLDER.WLDER1) 23334
WLDER ONE ARRIVAL

AL-253 (FAA)

MEMPHIS INTL (MEM)
 MEMPHIS, TENNESSEE

MEMPHIS APP CON
 119.1 291.6 (176°-355°)
 125.8 338.3 (356°-175°)
 D-ATIS
 127.75

POCKET CITY
 113.3 PXV
 Chan 80

NASHVILLE
 114.1 BNA
 Chan 88

MC KELLAR
 114.85 MKL
 Chan 95(Y)

DASAC
 11000
 9000

CASOT
 FL240 290K

SPKER
 FL230 280K

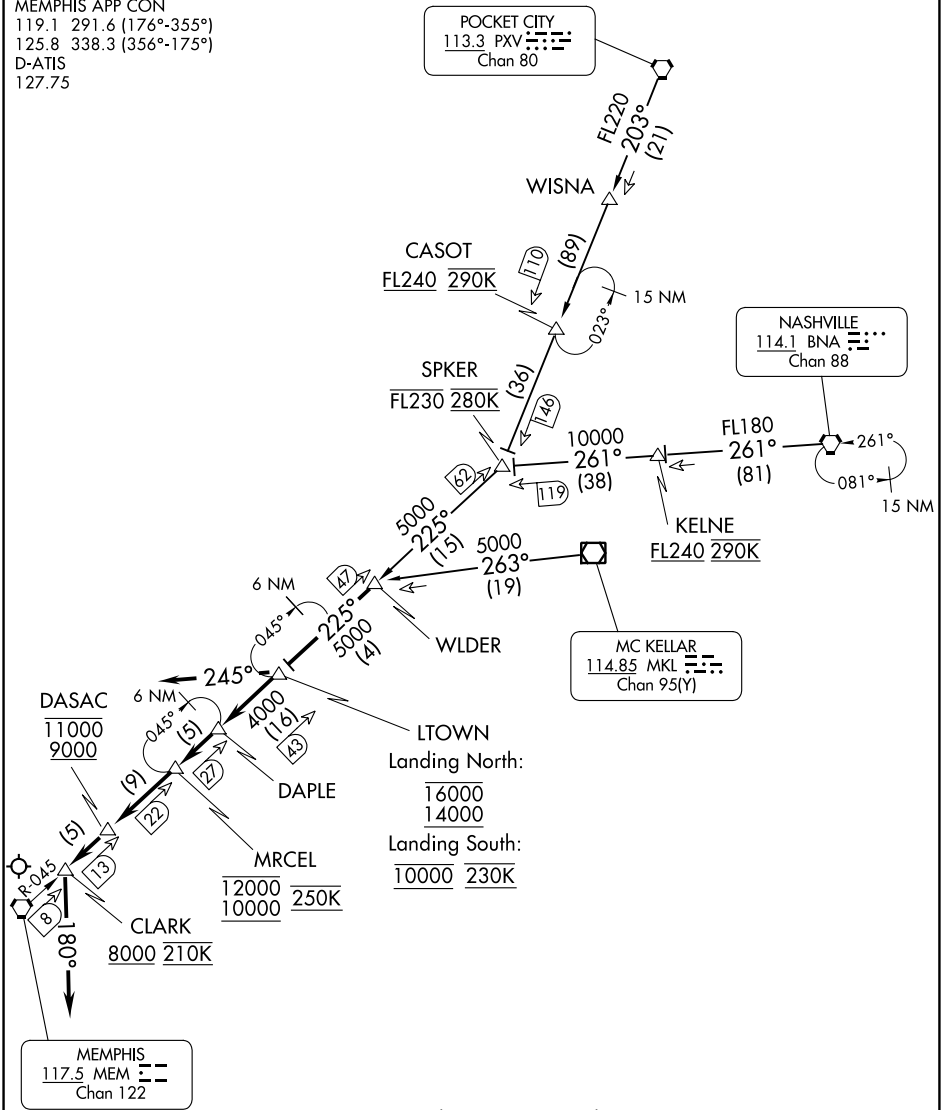
KELNE
 FL180 261°
 FL240 290K

LTOWN
 Landing North:
 16000
 14000
 Landing South:
 10000 230K

MRCEL
 12000 250K
 10000

CLARK
 8000 210K

MEMPHIS
 117.5 MEM
 Chan 122



- NOTE: DME and RADAR required.
- NOTE: Procedure NA for RNAV capable jets.
- NOTE: RNAV capable jets must file the BLUZZ RNAV STAR.
- NOTE: Maintain last assigned altitude until cleared to "Descend via the WLDER ONE", then comply with altitude restrictions as published.

(NARRATIVE ON FOLLOWING PAGE)

NOTE: Chart not to scale.

WLDER ONE ARRIVAL
 (WLDER.WLDER1) 24MAR22

MEMPHIS, TENNESSEE
 MEMPHIS INTL (MEM)

SE-1, 03 OCT 2024 to 31 OCT 2024

SE-1, 03 OCT 2024 to 31 OCT 2024