

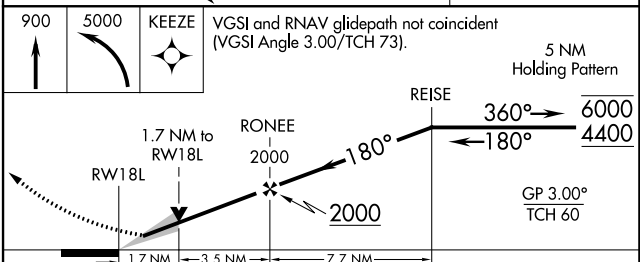
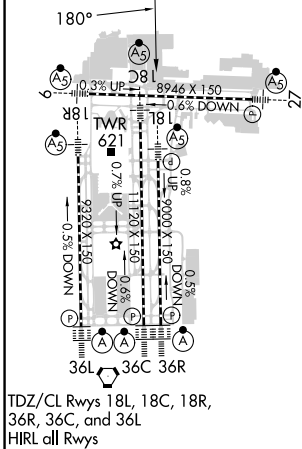
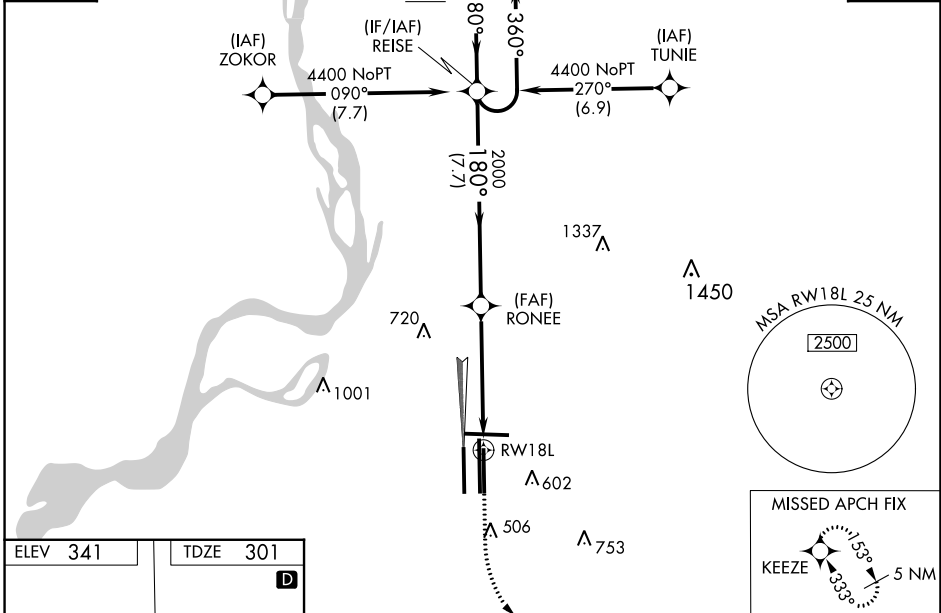
WAAS CH 53307 W18B	APP CRS 180°	Rwy Idg TDZE Apt Elev	9000 301 341
--	------------------------	-----------------------------	---

RNAV (GPS) Z RWY 18L

MEMPHIS INTL (MEM)

RNP APCH - GPS		MEMPHIS TOWER		GND CON		CLNC DEL	
Simultaneous approach authorized. For uncompensated Baro-VNAV systems, LNAV/VNAV NA below -15°C or above 54°C. LNAV procedure NA during simultaneous operations. Use of FD or AP required during simultaneous operations. For inop ALS, increase LNAV/VNAV all Cats visibility to 1½ SM and LNAV Cat C/D visibility to 1½ SM.		118.3 257.8 (Rwy 9-27) 119.7 257.8 (Rwys 18C-36C, 18L-36R) 128.425 257.8 (Rwy 18R-36L)		121.0 379.2 (Rwy 9-27) 121.9 379.2 (Rwys 18C-36C, 18L-36R) 121.65 379.2 (Rwy 18R-36L)			125.2
MISLSR MISSED APPROACH: Climb to 900 then climbing left turn to 5000 direct KEEZE and hold, continue climb-in-hold to 5000.							

MEMPHIS APP CON	MEMPHIS TOWER		GND CON	CLNC DEL
119.1 291.6 (176°-355°)	118.3 257.8 (Rwy 9-27)		121.0 379.2	125.2
125.8 338.3 (356°-175°)	119.7 257.8 (Rwys 18C-36C, 18L-36R)		121.9 379.2	
	128.425 257.8 (Rwy 18R-36L)		121.65 379.2	



CATEGORY	A	B	C	D
LPV DA	557/18 256 (300-½)			
LNAV/VNAV DA	874-1¼ 573 (600-1¼)			
LNAV MDA	880/24 579 (600-½)		880-1¼ 579 (600-1¼)	
CIRCLING	940-1 599 (600-1)		940-1½ 1020-2¼ 599 (600-1½) 679 (700-2¼)	

SE-1, 03 OCT 2024 to 31 OCT 2024

SE-1, 03 OCT 2024 to 31 OCT 2024