

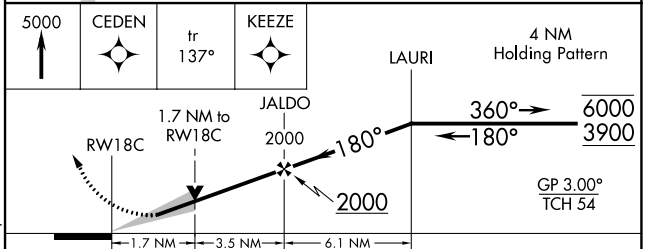
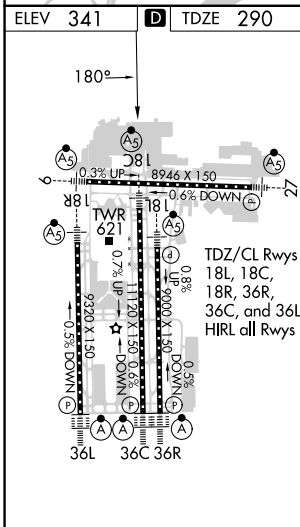
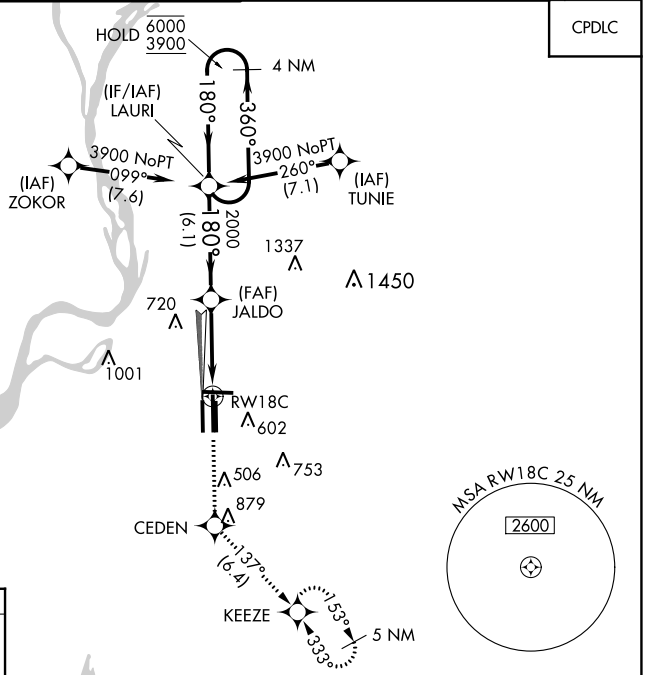
WAAS CH <b>97507</b>	APP CRS <b>180°</b>	Rwy Idg TDZE Apt Elev	<b>1120</b> <b>290</b> <b>341</b>
-------------------------	------------------------	-----------------------------	---

# RNAV (GPS) Z RWY 18C

MEMPHIS INTL (MEM)

RNP APCH - GPS		MEMPHIS TOWER		GND CON		CLNC DEL	
Simultaneous approach authorized. For uncompensated Baro-VNAV systems, LNAV/VNAV NA below -15°C or above 54°C. Use of FD or AP required during simultaneous operations. LNAV procedure NA during simultaneous operations. For Inop ALS, increase LPV all Cats visibility to RVR 5500 and LNAV/VNAV all Cats visibility to 1 3/8 SM.		<b>118.3 257.8</b> (Rwys 18C-36C, 18L-36R)		<b>121.0 379.2</b> (Rwys 9-27)		<b>121.9 379.2</b> (Rwys 18C-36C, 18L-36R)	
<b>125.8 338.3</b> (356°-175°)		<b>119.7 257.8</b> (Rwy 18R-36L)		<b>121.65 379.2</b> (Rwy 18R-36L)		<b>125.2</b>	

D-ATIS <b>127.75</b>	CPDLC
-------------------------	-------



CATEGORY	A	B	C	D
LPV DA		665/35	375 (400-5%)	
LNAV/VNAV DA		782/50	492 (500-1)	
LNAV MDA	880/24	590 (600-1/2)	880-1 1/4	590 (600-1 1/4)
<b>C</b> CIRCLING	940-1	599 (600-1)	940-1 3/4 599 (600-1 3/4)	1020-2 1/4 679 (700-2 1/4)

SE-1, 11 JUL 2024 to 08 AUG 2024

SE-1, 11 JUL 2024 to 08 AUG 2024