


# RNAV (RNP) Y RWY 18L

MEMPHIS INTL (MEM)

APP CRS	Rwy Idg	<b>9000</b>
<b>180°</b>	TDZE	<b>301</b>
	Apt Elev	<b>341</b>

**▼** For uncompensated Baro-VNAV systems, procedure NA below -9°C (16°F) or above 48°C (118 °F). GPS required. Simultaneous approach authorized. For inop ALS, increase RNP 0.30 \* all Cats visibility to RVR 6000 and RNP 0.30 all Cats visibility to 1¼ SM.

**MALSR**  
  
**MISSED APPROACH:** Climb to 5000 on track 180° to PENLE and on track 136° to KEEZE and hold, continue climb-in-hold to 5000. \*Missed approach requires minimum climb of 400 feet per NM to 1000.

MEMPHIS APP CON

<b>119.1</b>	<b>291.6</b>	(176°-355°)
<b>125.8</b>	<b>338.3</b>	(356°-175°)

MEMPHIS TOWER

(Rwy 9-27)	<b>118.3</b>	<b>257.8</b>
(Rwys 18C-36C, 18L-36R)	<b>119.7</b>	<b>257.8</b>
(Rwy 18R-36L)	<b>128.425</b>	<b>257.8</b>

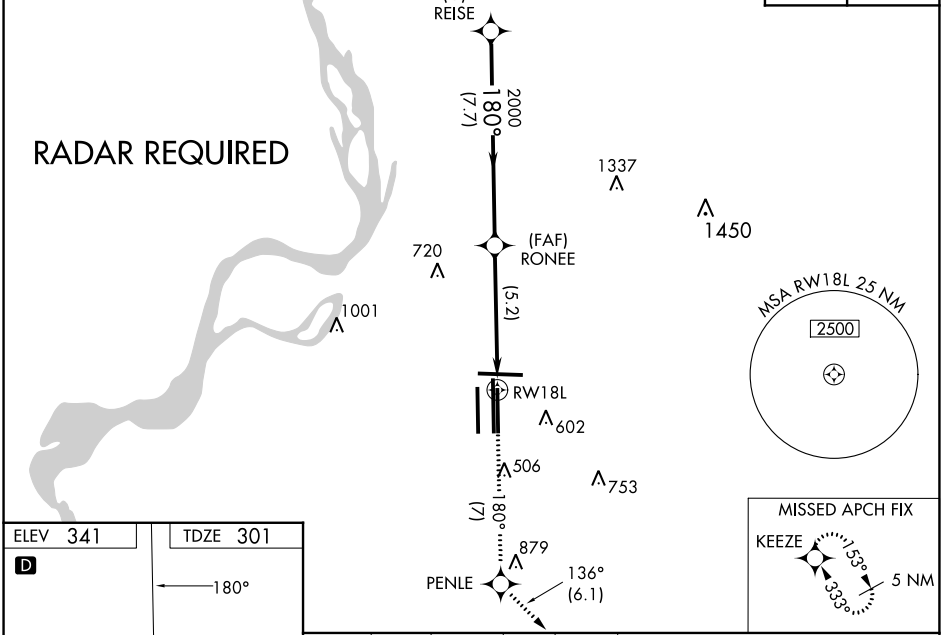
GND CON

(Rwy 9-27)	<b>121.0</b>	<b>379.2</b>
(Rwys 18C-36C, 18L-36R)	<b>121.9</b>	<b>379.2</b>
(Rwy 18R-36L)	<b>121.65</b>	<b>379.2</b>

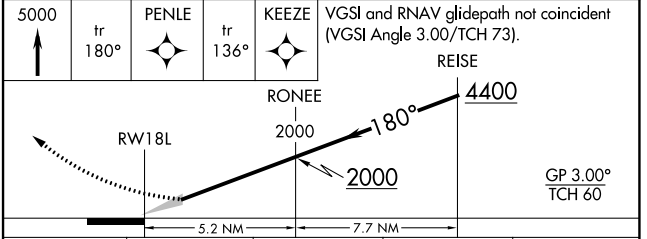
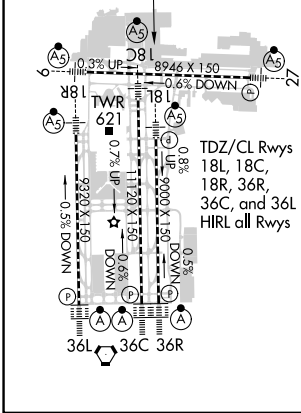
D-ATIS  
**127.75**

CLNC DEL  
**125.2**

CPDLC



ELEV	<b>341</b>
TDZE	<b>301</b>



CATEGORY	A	B	C	D
RNP 0.30 DA*		698/50	397 (400-1)	
RNP 0.30 DA		791/60	490 (500-1¼)	

## AUTHORIZATION REQUIRED

SE-1, 03 OCT 2024 to 31 OCT 2024

SE-1, 03 OCT 2024 to 31 OCT 2024