

NIKE FIVE DEPARTURE (RNAV)

SE-1, 03 OCT 2024 to 31 OCT 2024

D-ATIS
127.75
CLNC DEL
125.2
CPDIC
GND CON

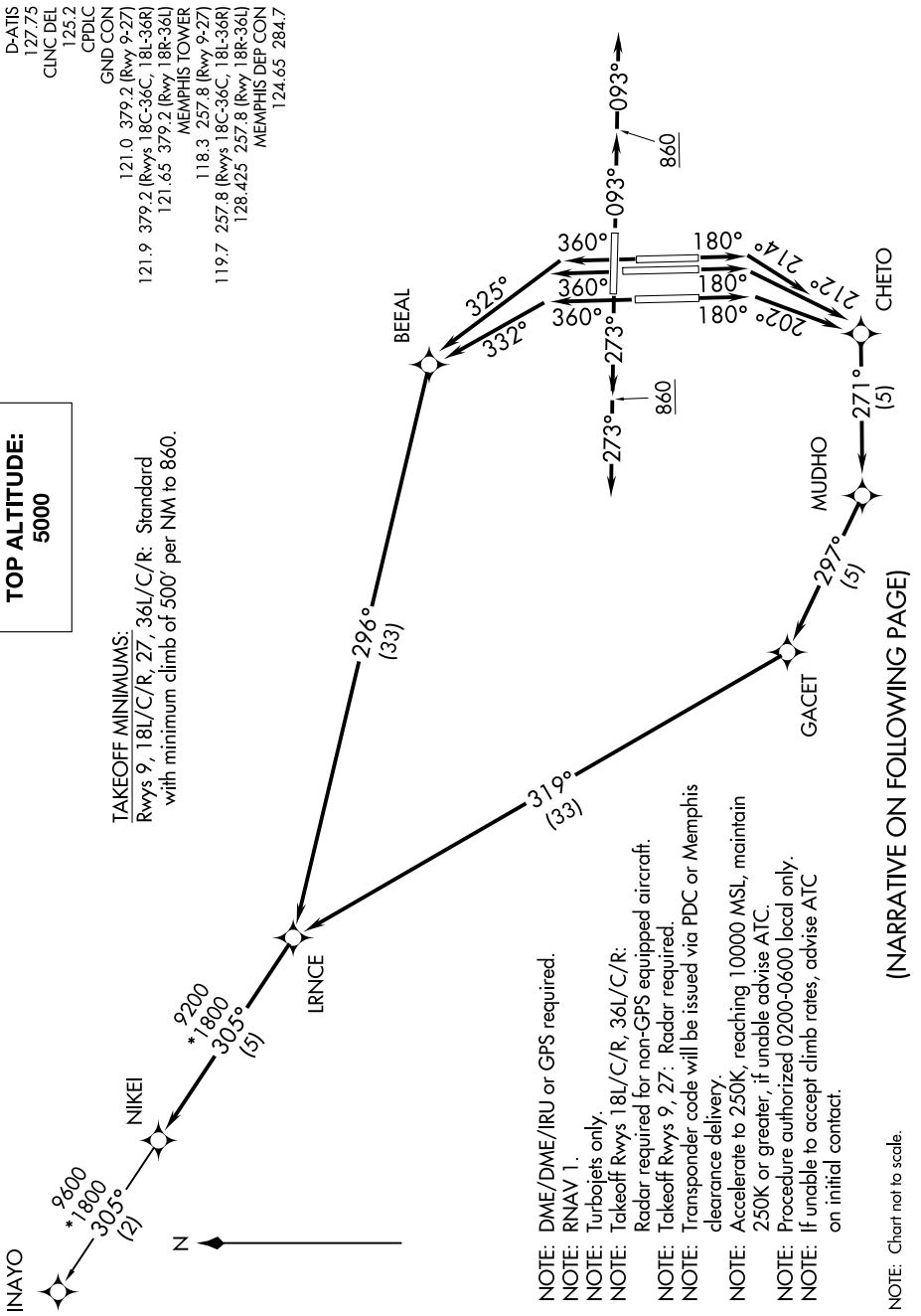
121.0 379.2 (Rwy 9-27)
121.9 379.2 (Rwys 18C-36C, 18I-36R)
121.65 379.2 (Rwy 18R-36I)
MEMPHIS TOWER

118.3 257.8 (Rwy 9-27)
119.7 257.8 (Rwys 18C-36C, 18I-36R)
128.425 257.8 (Rwy 18R-36I)
MEMPHIS DEP CON
124.65 284.7

**TOP ALTITUDE:
5000**

TAKEOFF MINIMUMS:

Rwys 9, 18L/C/R, 27, 36L/C/R: Standard
with minimum climb of 500' per NM to 860.



- NOTE: DME/DME/IRU or GPS required.
- NOTE: RNAV 1.
- NOTE: Turbojets only.
- NOTE: Takeoff Rwys 18L/C/R, 36L/C/R: Radar required for non-GPS equipped aircraft.
- NOTE: Takeoff Rwys 9, 27: Radar required.
- NOTE: Transponder code will be issued via PDC or Memphis clearance delivery.
- NOTE: Accelerate to 250K, reaching 10000 MSL, maintain 250K or greater, if unable advise ATC.
- NOTE: Procedure authorized 0200-0600 local only.
- NOTE: If unable to accept climb rates, advise ATC on initial contact.

NOTE: Chart not to scale.

(NARRATIVE ON FOLLOWING PAGE)

SE-1, 03 OCT 2024 to 31 OCT 2024

NIKE FIVE DEPARTURE (RNAV)